



How to bend the positive pole of the photovoltaic panel wire box





Overview

Create a “Drip Loop”: Before entering the box, bend each cable into a downward U-shape about 6 inches below the box. Terminal tightness is your first line of defense against fires. Terminal Torquing Procedure (NEC. ive terminal of a module to the negative of the next one, increasing the voltage. To do this, follow the next steps: Connect the female MC4 plug (negative) to t anel together, you create multiple pathways for t esign decisions engineers make when they are installing photovoltaic (PV) panels. In this article, we'll explore how to identify the positive and negative terminals of a solar panel, check solar panel polarity, and effectively connect a solar panel to a battery.



How to bend the positive pole of the photovoltaic panel wire box



[How to install the positive and negative poles of photovoltaic bracket](#)

ough installing your ground-mounted solar panels in a pure DIY fashion. We make it easy to understand PV string open-circuit fault and correctly group the PV string cables. b. If R4 is less than R3, A is the ...

DIY PV System Installation -

- Install a ground lug, and tie the ground wire from the house power distribution panel and the PV array Jbox. The grounding lug should be attached to the box with a self tapping screw so ...



[How to place positive and negative wires on photovoltaic panels](#)

The article explains how to determine the positive and negative terminals of a solar panel, crucial for proper installation to avoid energy wastage. Methods include examining the diode and using a ...



[How to connect solar panels to distinguish positive and negative poles](#)

Often, this involves connecting the inverter's input terminals to the solar panels' respective polarities, ensuring that positive aligns with positive and negative with negative.



Photovoltaic panel wiring positive and negative

The article explains how to determine the positive and negative terminals of a solar panel, crucial for proper installation to avoid energy wastage. Methods include examining the diode ...



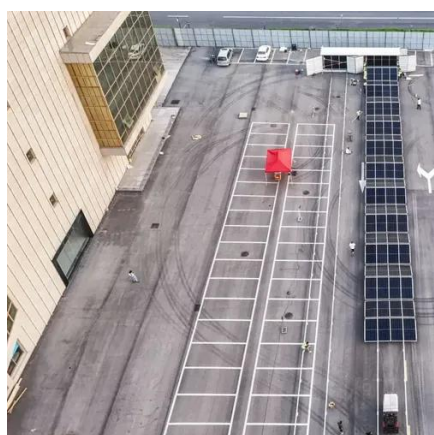
[How to Wire a Solar Panel Junction Box: Professional Guide \[2026\]](#)

Learn how to wire a solar panel junction box safely. This step-by-step guide covers wire preparation, MC4 crimping techniques, terminal torquing, and NEC 690 compliance.



[Identifying Positive and Negative Terminals on a Solar Panel](#)

In this article, we'll explore how to identify the positive and negative terminals of a solar panel, check solar panel polarity, and effectively connect a solar panel to a battery.



Solar Panel Positive and Negative



(Diode + Voltmeter)

In this article, you will learn how to determine the positive and negative terminals of a solar panel. We will also show you how to check solar panel polarity, and how to connect a solar panel to a battery.

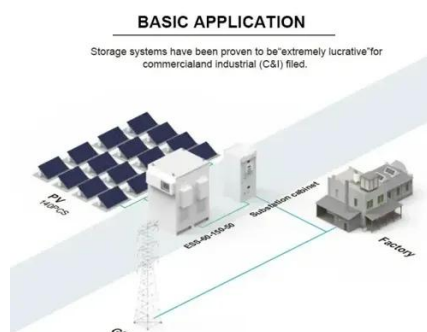


[How to adjust the positive and negative poles when installing](#)

First of all, adjust the elevation of the solar panel according to the determined appropriate installation angle and orientation to ensure good and sufficient lighting conditions

Solar Panel Wiring Basics: How to Wire Solar Panels

Master solar panel wiring with this in-depth guide. Learn how to configure series and parallel connections, calculate voltage and current, and safely integrate inverters, charge controllers, and ...





Contact Us

For catalog requests, pricing, or partnerships, please visit:

<https://firmaskrzypek.pl>

Phone: +48 22 426 71 90

Email: info@firmaskrzypek.pl

Scan the QR code to access our WhatsApp.

