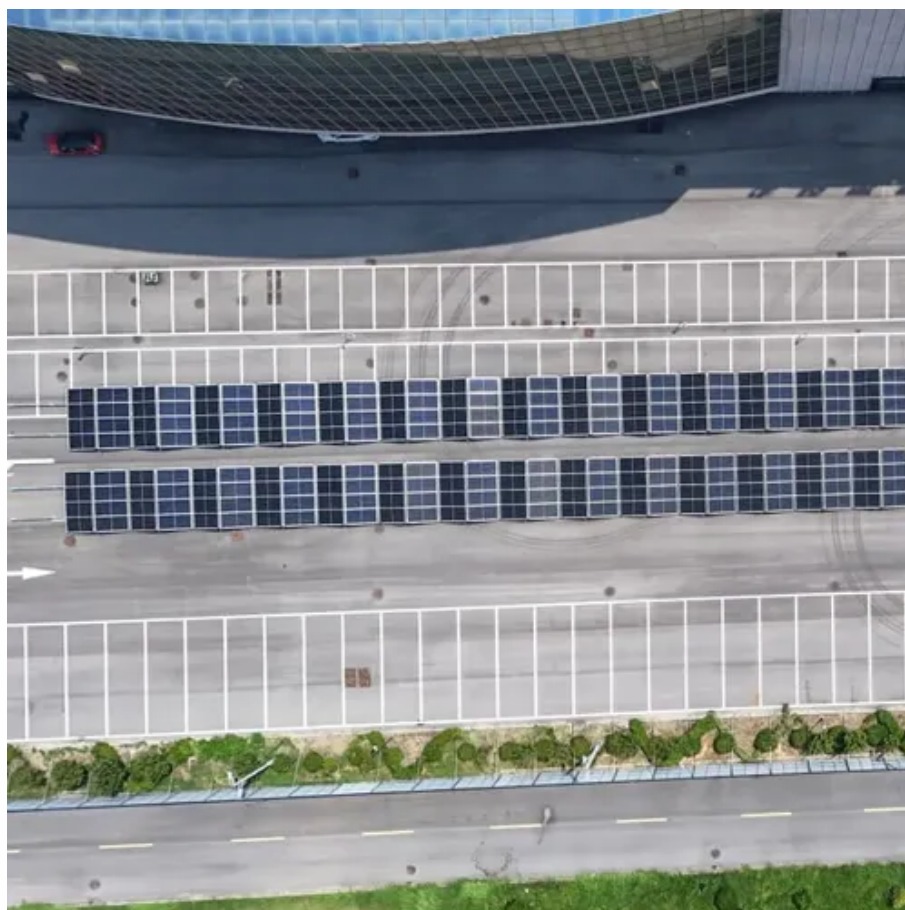




How much wattage current does a solar panel have





How much wattage current does a solar panel have

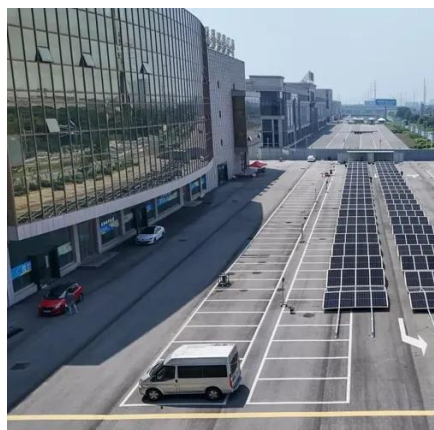


[What is the Wattage of Solar Panels? Understanding It](#)

In the context of solar panels, wattage tells you how much electricity the panel can generate under optimal conditions. The unit of measurement is watts (W), and solar panels typically ...

[How much current does the solar panel output? , NenPower](#)

How much current does the solar panel output? 1. The output of standard solar panels typically ranges from 5 to 20 amps, depending on the panel's size and technology. 2. Factors such ...



[Solar Panel Wattage Explained: How Many Watts Do You Need?](#)

This guide will explain solar panel wattage clearly, with real-life examples and simple calculations anyone can follow. Whether you're a homeowner exploring solar energy or a weekend ...

Solar Panel Output and Wattage Explained

Wattage: Wattage is the maximum power a panel can produce under ideal conditions, measured in watts. Think of it as the panel's potential output.



[How Much Energy Does A Solar Panel Produce? , EnergySage](#)

About 97% of home solar panels installed in 2025 produce between 400 and 460 watts, based on thousands of quotes from the EnergySage Marketplace. But wattage alone doesn't tell the ...



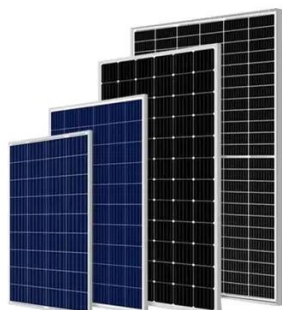
[Solar Panel Wattage Explained Simply: Empower Yourself](#)

General range: Modern panels for homes generally range from 350W to 460W. Older panels that were installed 5 to 10 years ago are typically rated at 250 to 300W, according to this ...



[Solar Panel Ratings Explained - Wattage, Current, Voltage, and](#)

The Maximum Power Current rating (I_{mp}) on a solar panel indicates the amount of current produced by a solar panel when it's operating at its maximum power output (P_{max}) under ...



[Solar Panel Wattage Calculation: How To](#)



Calculate In 2025?

The basic solar panel wattage formula is: $\text{Wattage} = \text{Voltage} \times \text{Current}$. However, real-world applications require more sophisticated calculations accounting for environmental factors, system losses, and ...



Solar Panel Wattage & Output Explained

Learn how solar panel wattage, efficiency, and real-world output work so you can size systems accurately and choose the right equipment.

Solar Basics: Voltage, Amperage & Wattage , The Solar Addict

For example, a solar panel with a voltage of 20V and an amperage of 5A has a wattage of 100W. This means the panel can produce 100 watts of power under optimal conditions.





Contact Us

For catalog requests, pricing, or partnerships, please visit:

<https://firmaskrzypek.pl>

Phone: +48 22 426 71 90

Email: info@firmaskrzypek.pl

Scan the QR code to access our WhatsApp.

