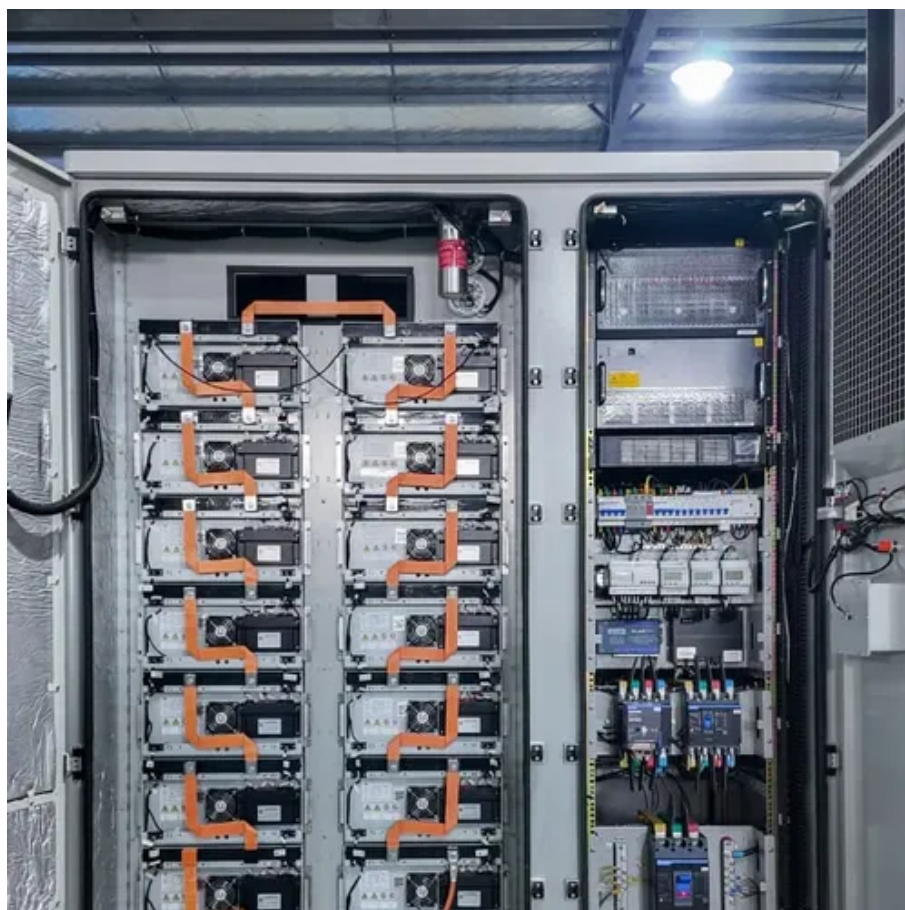




# How much solar energy does a 12v18w water pump need





## Overview

---

A standard 1 HP (horsepower) water pump typically requires between 800 to 1200 watts of solar panels. This usually translates to three 400W panels or twelve 100W panels. The exact number depends on the pump type (AC or DC), its efficiency, and your location's sunlight conditions. The Solar Water Pump Sizing Calculator is a tool designed to calculate the solar panel and battery requirements for a water pump, particularly useful for individuals relying on solar power for irrigation, livestock, or other purposes. Solar panel power (Watts) → how many panels you need to run the pump. Example for a. To properly size a solar pump, you must consider various factors, including the pump's power, the depth of water, and the flow rate required. Understanding the formula for sizing the system is the first step toward achieving an efficient and sustainable setup.



## How much solar energy does a 12v18w water pump need



Application scenarios of energy storage battery products

### [Solar Water Pumps: The Ultimate Guide \(Sizing, Cost & Installation\)](#)

The definitive guide to solar water pumps. We cover how they work, how to size the right panels and pump for your project, costs, and installation. Use our interactive calculator to design ...



### **How To Calculate Solar Panel For Water Pump**

Calculating the number of solar panels needed to power a water pump is a relatively straightforward process. With the help of some basic calculations, you can determine exactly how ...



### [How Many Solar Panels Do You Need to Run a Water Pump?](#)

To run a water pump on solar, multiply the pump's power by 1.5 to calculate the total solar panel wattage needed. For example, a 1000W pump requires at least 1500W of solar panels.

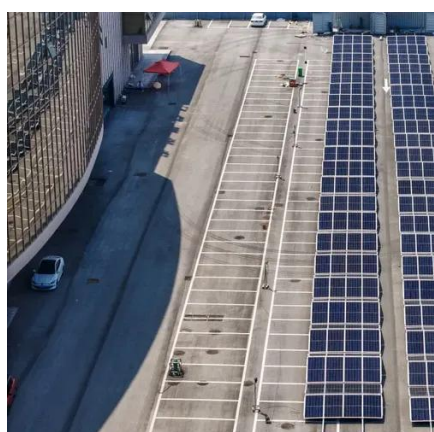
### [Solar Water Pump Sizing Calculator - 9to5 Equipment](#)

Daily energy use (Wh) -> how much power the pump consumes in 24 hours. Instead of guessing or relying on trial-and-error, this calculator uses physics formulas to give accurate numbers based on ...



## Guide to Solar Water Pump Sizing

.33 gallons per minute (GPM). This means you will need a pumping system that is capable of pumping at least 3.33 GPM to sustain the daily watering requirements. Due to variations in peak sun hours ...



## How Many Solar Panels for a Solar Water Pump?

For a 1 HP (approximately 746 watts) water pump, you generally need between 800 to 1200 watts of solar panels. This could be three 400W panels for a more efficient DC pump or four 400W panels for ...



## [How to Calculate the Pump Size for a Solar Pumping System?](#)

Choosing the right size pump depends on a variety of factors such as the desired water flow rate, head height (the distance the water needs to be lifted), and the available solar power.

## Solar Water Pump Sizing Calculator



Using the Solar Water Pump Sizing Calculator, the minimum solar panel wattage required is calculated as follows:  $\text{Panel Wattage} = (5 \times 50 \times 0.00134) / (0.7 \times 6) = 2.34$ . Therefore, the minimum wattage of ...



### [How to calculate the number of solar panels for a water pump?](#)

To determine how many panels you need, divide your total energy requirement (pump wattage  $\times$  daily hours of use) by the energy output per panel. For example, if your submersible water pump needs ...

## **How To Calculate Solar Power Water Pump**

The Solar Water Pump Sizing Calculator is a tool designed to calculate the solar panel and battery requirements for a water pump, particularly useful for individuals relying on solar power ...





## Contact Us

---

For catalog requests, pricing, or partnerships, please visit:

<https://firmaskrzypek.pl>

Phone: +48 22 426 71 90

Email: [info@firmaskrzypek.pl](mailto:info@firmaskrzypek.pl)

Scan the QR code to access our WhatsApp.

