



How many watts of battery are needed for a 5G base station





How many watts of battery are needed for a 5G base station

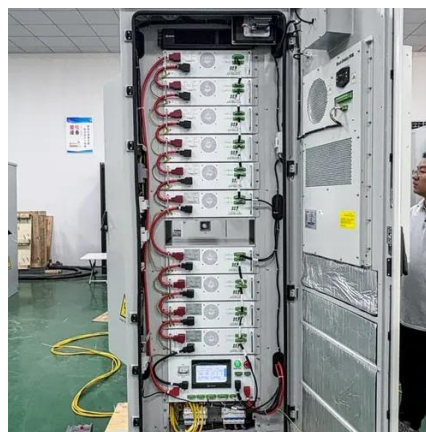


[Why 5G Base Stations Need Energy Storage Batteries: A ...](#)

Did you know a single 5G base station consumes up to 3x more power than its 4G counterpart? As telecom operators race to deploy faster networks, energy storage batteries have become the unsung ...

[A technical look at 5G energy consumption and performance](#)

To understand this, we need to look closer at the base station power consumption characteristics (Figure 3). The model shows that there is significant energy consumption in the base ...



Release Notes

Noticeably, in the 5G era, the maximum power consumption of a 64T64R AAU is 1000-1400 W, and that of a BBU is about 2000 W. Multiple bands in one site will be the typical configuration in the 5G era. ...

[A technical look at 5G energy consumption and performance](#)

Base Station Power Consumption
Energy Saving Features of 5G New Radio
How Much Energy Can We Save with Nr Sleep Modes?
Impact on Energy Efficiency and Performance in A Super Dense Urban Scenario
Further Reading
The 5G NR



standard has been designed based on the knowledge of the typical traffic activity in radio networks as well as the need to support sleep states in radio network equipment. By putting the base station into a sleep state when there is no traffic to serve i.e. switching off hardware components, it will consume less energy. The more component See more on ericsson huawei [PDF]



Release Notes - huawei

Noticeably, in the 5G era, the maximum power consumption of a 64T64R AAU is 1000-1400 W, and that of a BBU is about 2000 W. Multiple bands in one site will be the typical configuration in the 5G era. ...

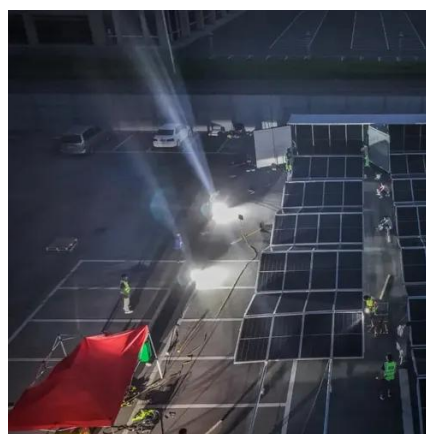


5G Base Station Lithium Battery: Capacity and Discharge Rate ...

EverExceed's high-rate discharge LiFePO4 batteries are engineered to handle these demanding conditions, ensuring stable and efficient power delivery to 5G infrastructure.

Energy Consumption of 5G, Wireless Systems and the Digital Ecosystem

"A 5G base station is generally expected to consume roughly three times as much power as a 4G base station. And more 5G base stations are needed to cover the same area," -IEEE Spectrum, 5G's ...



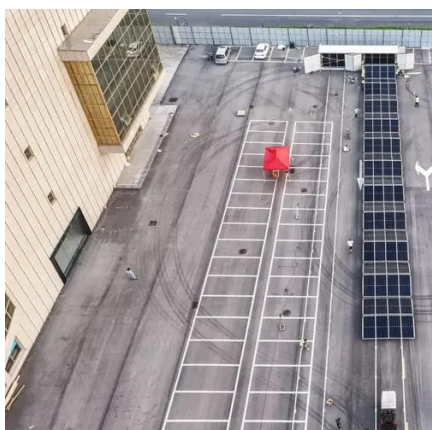
What is Li-Ion Battery For 5G Base Station? Uses, How It

In essence, Li-ion batteries for 5G base stations are vital components that ensure network resilience, reduce downtime, and facilitate rapid deployment of next-generation wireless ...



[How many watts of battery are needed for a 5G base station](#)

On average, a 5G base station consumes between 1,000 to 3,000 watts. This is significantly higher than 4G base stations, which typically consume 500 to 1,500 watts.



[Sizing battery backup runtime for rural bad-grid 5G with Outdoor](#)

Here are the main components you should consider: 5G base station: This equipment uses at least twice as much power as a typical 4G base station. In fact, a single 5G base station can ...

[What is the Power Consumption of a 5G Base Station?](#)

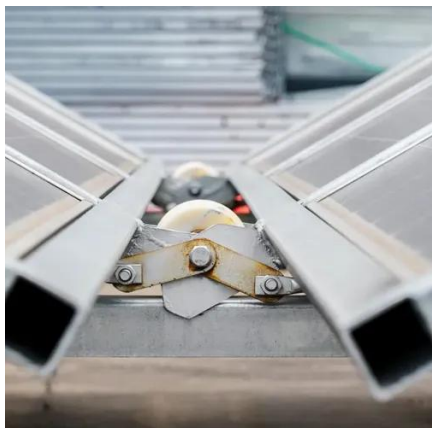
A typical 5G base station operates across several frequency bands, accommodating high-frequency millimeter-wave bands. By 2023 or later, it is likely that there could be more than five ...



[Front Line Data Study about 5G Power](#)



Consumption , You need



The power consumption of a single 5G station is 2.5 to 3.5 times higher than that of a single 4G station. The main factor behind this increase in 5G power consumption is the high power usage of the active ...



Contact Us

For catalog requests, pricing, or partnerships, please visit:

<https://firmaskrzypek.pl>

Phone: +48 22 426 71 90

Email: info@firmaskrzypek.pl

Scan the QR code to access our WhatsApp.

