



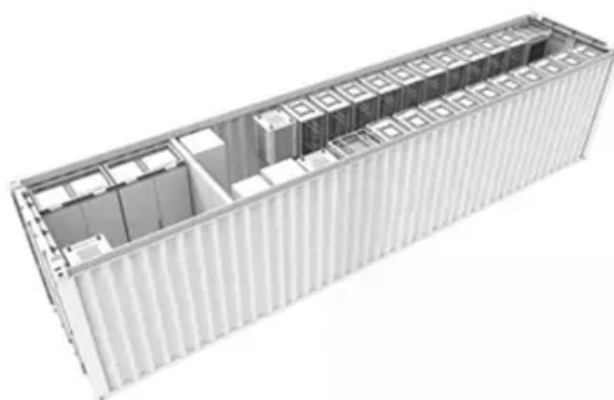
How many watts does a 12v 180ah lithium battery pack have



 **TAX FREE**

1-3MWh

BESS





Overview

A 180 Ah battery can provide around 1,000Wh of power, which is enough to run most household appliances for a few hours. It's a table that tells you how many watts are in all 12V battery sizes; from a very small 1000mAh battery to a very enormous 5,000Ah battery. Watts and watt-hours are not the same. Example: How many watts. 12v 300Ah battery is equal to 3600 watts or 3. Here's a chart with the conversion of different size 12v batteries in watts. For example, if. The How Many Watts in a 12 Volt Battery calculator is a dynamic tool designed to help you determine the electrical power capacity of a 12-volt battery. Whether you're assessing battery suitability for a solar setup, a recreational vehicle, or an off-grid system, this calculator provides a. The answer depends on voltage, discharge rate, and a few other factors that aren't always obvious from a label. Enter your device watts, hours per day, system voltage, inverter efficiency, and depth of discharge (DoD)—the tool.



How many watts does a 12v 180ah lithium battery pack have



Many Definition & Meaning

Many definition: Amounting to or consisting of a large indefinite number.

12 Volt Battery Run Time Calculator

BatteryStuff Tech 17 watts / 12.5 volts = 1.36 amps. 9 of these lights will pull 12.24 amps per hour. running 8 hours is a total of 97.92 amps. The calculator recommend a battery with ~ 200 ...

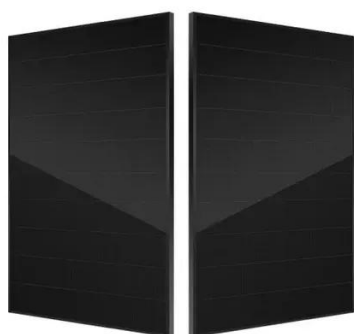


MANY , English meaning

We use many to refer to a large number of something countable. We most commonly use it in questions and in negative sentences: ...

[180 Ah Battery How Many Watts? \(Backup Time Calculator\)](#)

A 180 Ah battery can provide around 1,000Wh of power, which is enough to run most household appliances for a few hours. However, it is important to note that the actual amount of ...

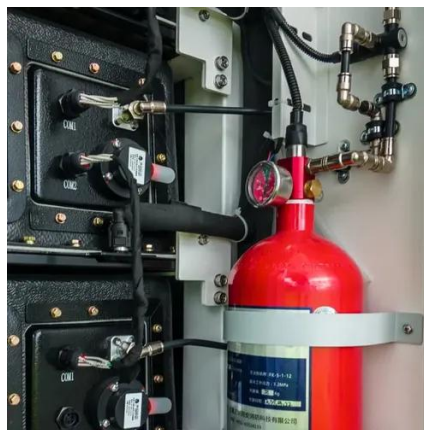


many determiner

Definition of many determiner in Oxford Advanced Learner's Dictionary. Meaning, pronunciation, picture, example sentences, grammar, usage notes, synonyms and more.

Lithium Battery Watt-hour Calculator

Our Watt-hour Calculator transforms complex battery specifications into clear, practical energy measurements. Whether you're building a DIY power bank, planning an electric vehicle ...



↑ ESS



[Battery Capacity Calculator: Convert Ah to Wh & Find Runtime](#)

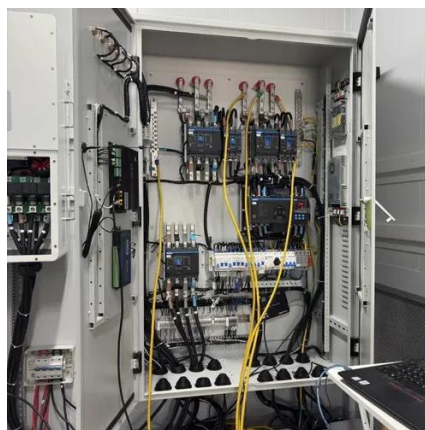
Convert between amp-hours and watt-hours, calculate C-rate, discharge current, and battery runtime. Works for lithium, lead-acid, LiFePO4, and all battery types. You've got a battery spec sheet in front ...

How Many Watts In A 12 Volt Battery



Calculator

The How Many Watts in a 12 Volt Battery calculator is a dynamic tool designed to help you determine the electrical power capacity of a 12-volt battery.



[How to Calculate Battery Capacity \(Ah, mAh, and Watt-hours\)](#)

To calculate how much energy a battery holds in watt-hours, use: If your battery capacity is in mAh (milliamps), convert it to Ah first: You have a 12V battery rated at 100Ah. So it stores 1200 ...

MANY Definition & Meaning

The meaning of MANY is consisting of or amounting to a large but indefinite number. How to use many in a sentence.



[MANY definition and meaning , Collins English Dictionary](#)

You use many to indicate that you are talking about a large number of people or things. I don't think many people would argue with that. Not many films are made in Finland. Do you keep many books ...



[Amp Hour Calculator , Battery Capacity](#)



[Calculator, Ah<->Wh \(12V-48V\)](#)

Enter your device watts, hours per day, system voltage, inverter efficiency, and depth of discharge (DoD)--the tool instantly returns required capacity in Ah/Wh/kWh and expected runtime.

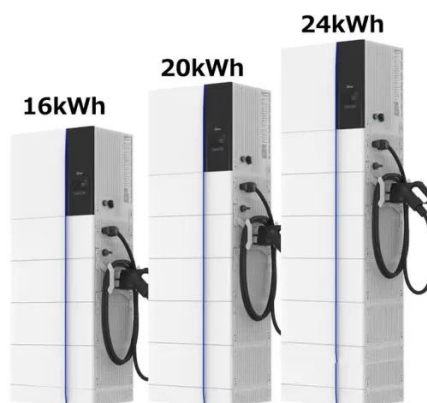


[Many - meaning, definition, etymology, examples and more -- Self](#)

Explore the word "many" in detail, including its origins, variations, and common phrases. Learn about its historical and contemporary usage, as well as its impact on language and culture.

Battery Amp hours To Watts (Ah to Watts) Calculator

Usually, 12v car batteries have a capacity of 60Ah so let's assume that you have a 12v 60Ah car battery. $12 \times 60 = 720$ watts. So a 12v car battery is equal to 720 watts.



[many , Dictionaries and vocabulary tools for English](#)

many or much? Many is used with words for things that we can count. Much is used with words for things that we cannot count. Compare: Do you have many things to do today? Do you have much ...

Battery Run Time Calculator



To estimate how long your 12V, 24V, and 48V batteries will last, you need to know a few key details: The battery capacity (in Ah or mAh) and the power consumption of your device (in watts ...



LPR Series 19' Rack Mounted



[How Many Watts In A 12 Volt Battery? \(Calculator + Chart\)](#)

'How Many Watts In A 12V Battery' Calculator found below. Basically, you just insert the battery capacity in amp-hours (Ah) and the calculator will automatically tell you how many watts there are in that 12V ...

Battery Amp hours To Watts (Ah to Watts) Calculator

A 180 Ah battery can provide around 1,000Wh of power, which is enough to run most household appliances for a few hours. However, it is ...





Contact Us

For catalog requests, pricing, or partnerships, please visit:

<https://firmaskrzypek.pl>

Phone: +48 22 426 71 90

Email: info@firmaskrzypek.pl

Scan the QR code to access our WhatsApp.

