



How many watts are solar inverters divided into





Overview

In typical residential installations, inverters are generally rated between 1,000 watts to 7,000 watts, catering to average household energy consumption requirements. If you have a 1000 watt solar array, your inverter must be at least 1200 watts. There must be at least 10% reserve power available, 20% is even better for large off grid solar systems. The right way to size an inverter is to check the wattage. The inverter wattage must be the same or greater than. Consequently, inverter sizes vary greatly. Your inverter needs to handle that 6kW of DC power, regardless of whether your home uses 2kW or 10kW at any given moment. Consider this real-world example:.



How many watts are solar inverters divided into



[How to Choose the Right Size Solar Inverter: Step-by-Step with Real](#)

This guide walks you through calculating inverter size based on panel capacity, power usage, and safety margins. We use real examples from installations in Texas and Queensland to ...

Solar Inverter Size Chart

The inverter wattage must be the same or greater than your solar panel's watts. Here is a chart that shows the watts consumption of various appliances and what inverter size you will need.



[Solar Inverter Sizing Guide: How to Size Your Inverter](#)

Let's say you have a 6kW solar array (twenty 300-watt panels). Your inverter needs to handle that 6kW of DC power, regardless of whether your home uses 2kW or 10kW at any given ...

The Only Inverter Size Chart You'll Ever Need

During our research, we discovered that most inverters range in size from 300 watts up to over 3000 watts. In this article, we guide you through the different inverter sizes.



Everything You Need to Know About Inverter Sizing

There are two main types of solar inverters commonly used in solar systems: string inverters and microinverters. String inverters, also known as central inverters, are centrally located ...



[How many watts does a solar inverter have? , NenPower](#)

Solar inverters can be classified broadly into three primary categories - string inverters, microinverters, and central inverters. Each type has its unique characteristics and use cases that ...



[How Much Power Does Solar Inverter Use and How to Create the ...](#)

A solar inverter's power is typically split into two types. First, solar power is used when it's working, and second, when the solar inverter doesn't function or there's no load.

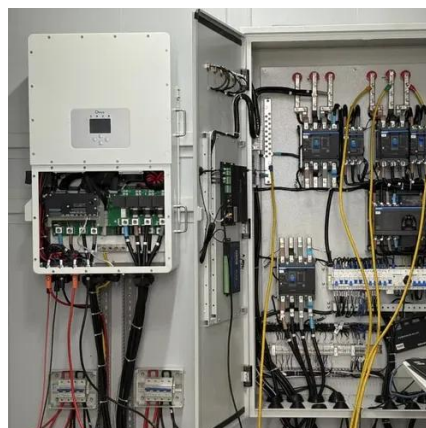


[Sizing Your Inverter for Your Solar Power](#)



System: The Basics

We found a great inverter on the EG4 website that has an output of 3,000 watts and has a solar input capacity of 5,000 watts. This is perfect because it not only meets the current needs of our example ...



How many solar panels can an inverter handle

Inverter Capacity: The number of solar panels an inverter can handle is primarily determined by its power rating, usually measured in watts (W). **Panel Wattage:** Consider the wattage ...

What size inverter do I need?

Every inverter is defined by two primary power specifications: continuous power and peak power. A nuanced understanding of these ratings is the first and most crucial step in the sizing process.





Contact Us

For catalog requests, pricing, or partnerships, please visit:

<https://firmaskrzypek.pl>

Phone: +48 22 426 71 90

Email: info@firmaskrzypek.pl

Scan the QR code to access our WhatsApp.

