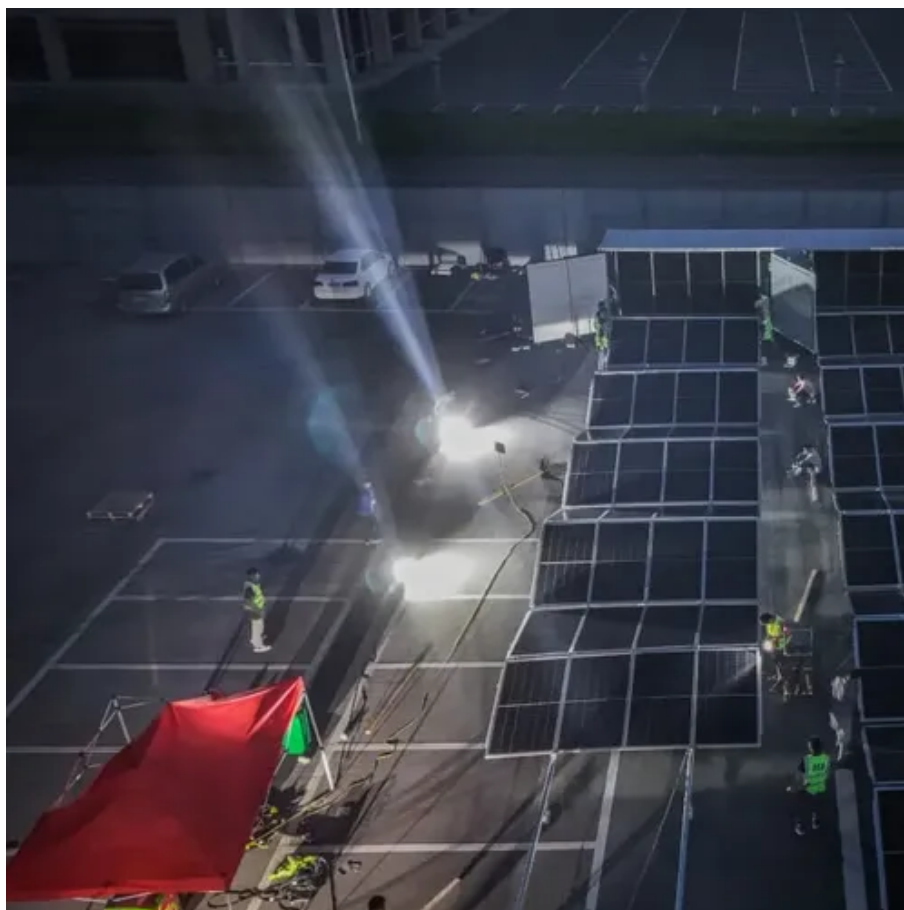




# How many volts does the photovoltaic DC combiner box have





## Overview

---

The voltage rating depends on how many panels you wire in a series. 600V: Common for older or very small residential systems. To choose the right one, you must match the system voltage (1000V or 1500V), calculate the correct fuse size ( $I_{sc} \times 1.25$ ). You now have a basic idea. You have 300 watt panels at 24v. Make sure the combiner. A solar combiner box is a crucial component in solar energy systems, designed to consolidate the outputs of multiple solar panel strings into a single output that connects to an inverter.



## How many volts does the photovoltaic DC combiner box have



### What is PV Combiner Box Components?

They are generally categorized based on their voltage ratings, which are 1000V DC gPV fuse & 1500V DC gPV fuse. DC Surge protection devices in a PV system protect electrical equipment ...

### [Solar Combiner Boxes and Voltage Changes: What to Know](#)

Each solar panel sends out direct current (DC) electricity. The solar combiner box takes these currents and sends them in one path to your inverter. Here is what top sources say about what a solar ...



### How To Size Solar Combiner Box?

Common combiner box ratings include 600V, 1000V, or 1500V. Make sure the combiner box you choose can handle the voltage of your PV system. For example, if the open circuit voltage of each panel is ...

### Solar Array Combiners

High voltage combiners may have voltages of up to 600 volts DC, and to meet electrical and safety codes, nearly always require fuses be used instead of breakers. This includes such products as ...



### [Photovoltaic DC Combiner Box Capacity: A Comprehensive Guide for ...](#)

Summary: Understanding the capacity of photovoltaic DC combiner boxes is crucial for optimizing solar energy systems. This guide explores sizing principles, industry trends, and practical solutions to help ...



### [The Ultimate Guide to Solar Combiner Boxes: From Basics to ...](#)

Choose a combiner box with a voltage rating that matches or exceeds the maximum voltage of your solar power system. This is critical for ensuring safe operation and preventing ...



### [Trying to understand Combiner Box sizing / restrictions](#)

Using the combiner box, you can connect 4 panels into one string. If you put two panels on one string, you either get 25 amps (parallel), or 48v (series). 25 amps exceeds the rating of the ...

Modular design,  
unlimited combinations in parallel  
**BUILT-IN DUAL FIRE PROTECTION MODULE**



### [Combiner Box Selection Guide: How to](#)



## Choose the Right PV DC Box

A solar combiner box merges multiple DC strings from solar panels into a single output for the inverter. To choose the right one, you must match the system voltage (1000V or 1500V), calculate the correct ...



## What Is a Combiner Box in a Solar Panel System? Complete Guide

Multiple PV strings enter on separate positive and negative inputs. The box merges them to one or two main outputs. This reduces cable runs to the inverter and keeps the roof clean. I also size the ...

## **How to Calculate PV Combiner Box Specifications?**

In this article, we walk you through a real-world case--144 solar panels of 555W each paired with a powerful 80kW inverter--and demonstrate exactly how to calculate your system's configuration. ...





## Contact Us

---

For catalog requests, pricing, or partnerships, please visit:

<https://firmaskrzypek.pl>

Phone: +48 22 426 71 90

Email: [info@firmaskrzypek.pl](mailto:info@firmaskrzypek.pl)

Scan the QR code to access our WhatsApp.

