



# How many volts does each string of 24v lithium battery pack have





## Overview

---

A 24V lithium-ion battery nominally consists of 8 cells in series, each with a nominal voltage of approximately 3.6V, depending on the specific lithium chemistry. 6V, with full charge voltage usually at 3. Download the LiFePO4 voltage chart here (right-click -> save image as). Wholesale lithium golf cart batteries with 10-year life?

Check here. This chart shows the voltage range from fully charged to discharged states, allowing users to identify the current state of charge (SoC) of their. The chart below provides a breakdown of voltage levels at different charge capacities for 12V, 24V, and 48V batteries.



## How many volts does each string of 24v lithium battery pack have



### [Lithium-Ion Battery Voltage Breakdown: 12V, 24V, 48V Explained](#)

This guide breaks down what you need to know about lithium-ion battery voltage, from charge levels to real-world applications, helping you make informed energy decisions.

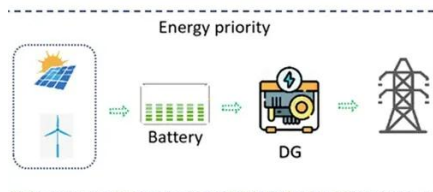
### [Understanding the Voltage of a Fully Charged 24V Lithium-Ion Battery](#)

A 24V lithium-ion battery nominally consists of 8 cells in series, each with a nominal voltage of approximately 3.2V (for LiFePO4 chemistry), summing to about 25.6V nominal.



### [Understanding the Voltage of a 24V Lithium Battery When Fully Charged](#)

A fully charged 24V lithium battery, specifically LiFePO4 types like DEESPAEK's, will show a voltage around 28.8 to 29.2V. Knowing this helps users verify charge status and maintain ...



## 24V Battery Voltage Chart

For 24V LiFePO4 batteries, the voltage range is slightly different: ...



### [24V Lithium Battery Voltage Chart - Goldenmate Battery](#)

One of the most popular battery packs is the 24-volt Lithium battery. It's referred to as a 24-volt battery because it exhibits a nominal voltage of 24. The nominal voltage of a battery is the ...



### **24V Battery Voltage Chart**

Our 24V battery voltage chart below gives you an indication of the voltage of your 24V battery at various battery percentages. Have a look to understand how the voltage changes slightly over time in a ...



### [How Many Volts Does Each String of a 24V Lithium Battery Pack ...](#)

A 24V lithium battery pack consists of multiple cells connected in series to achieve the desired voltage. Each "string" refers to a group of cells connected end-to-end.

### **24V Battery Voltage Chart**

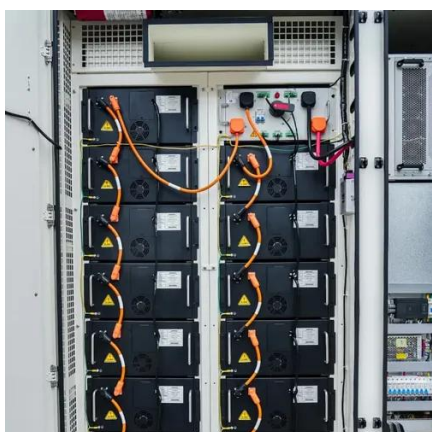


For 24V LiFePO4 batteries, the voltage range is slightly different: 80% charged is 27.2V-27.6V, 50% charged is 24.8V-25.2V, and so on. Using a 24V battery voltage chart helps users ...



### LiFePO4 Voltage Charts (1 Cell, 12V, 24V, 48V)

A 24V lithium battery usually contains six cells connected in series, each with a nominal voltage of about 3.7V. When fully charged, this setup provides around 25.2V, making it efficient for ...



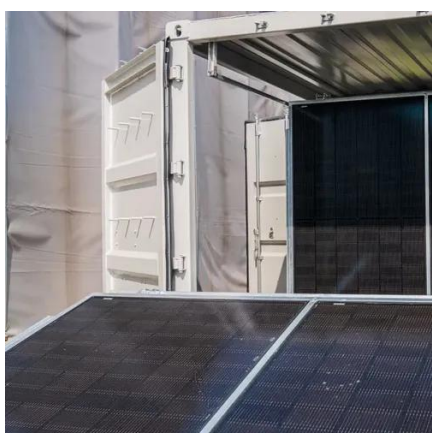
### LiFePO4 Voltage Charts (1 Cell, 12V, 24V, 48V)

This article will show you the LiFePO4 voltage and SOC chart. This is the complete voltage chart for LiFePO4 batteries, from the individual cell to 12V, 24V, and 48V.



### How many lithium cells in a 24v battery?

A 24V lithium battery usually contains six cells connected in series, each with a nominal voltage of about 3.7V. When fully charged, this setup provides around 25.2V, making it efficient for ...



[How Many Cells in a 24 Volt Battery? Lead-](#)



## Acid vs. Lithium Battery

A 24-volt system typically contains 12 lead-acid cells (2 volts each) or 7 lithium cells (3.7 volts each). Second, the capacity, measured in amp-hours (Ah), indicates how long the battery can ...





## Contact Us

---

For catalog requests, pricing, or partnerships, please visit:

<https://firmaskrzypek.pl>

Phone: +48 22 426 71 90

Email: [info@firmaskrzypek.pl](mailto:info@firmaskrzypek.pl)

Scan the QR code to access our WhatsApp.

