



# How many photovoltaic sites are there in Juba





## Overview

---

Five potential sites have been identified: Bedden (720 MW), Fula (1,080 MW), Lekki (420 MW), Shukoli (250 MW), and Juba Barrage (120 MW). The country also has abundant sunlight, receiving approximately 2,788 hours annually, which is about 7 hours and 37 minutes per day. The Juba Solar Power Station is a proposed 20 MW (27,000 hp) solar power plant in South Sudan. The solar farm is under development by a consortium comprising Elsewedy Electric Company of Egypt, Asunim Solar from the United Arab Emirates (UAE) and I-kWh Company, an energy consultancy firm also based. Ezra Group, a South Sudan family-run conglomerate, on Monday announced the launch of a 20-MW solar power plant with a 14-MWh battery energy storage system in South Sudan, marking the country's first major renewable energy project. It will be developed in a single phase. Credit: Ezra Group A public-private partnership in South Sudan has launched the country's first major solar power plant and Battery Energy Storage System. Other names: Juba Solar Pv Juba (Elsewedy Power) solar farm is a solar photovoltaic (PV) farm under construction in Juba, Juba Payam, Juba County, Central Equatoria, South Sudan. Read more about Solar capacity ratings.



## How many photovoltaic sites are there in Juba



### [South Sudan launches first solar plant with battery storage](#)

Five potential sites have been identified: Bedden (720 MW), Fula (1,080 MW), Lekki (420 MW), Shukoli (250 MW), and Juba Barrage (120 MW). The country also has abundant sunlight, ...

### **Juba (Elsewedy Power) solar farm**

Juba (Elsewedy Power) solar farm is a solar photovoltaic (PV) farm under construction in Juba, Juba Payam, Juba County, Central Equatoria, South Sudan. Read more about Solar capacity ratings. The ...



### [Solar park of 20 MW plus battery opens in South Sudan](#)

According to the company, the 20-MW solar plant can generate enough power for up to 16,000 households in Juba. It is expected to reduce energy costs and improve grid reliability.

### [JUBA PV PLANT QUINTUPLES SOUTH SUDAN'S SOLAR POWER ...](#)

South Sudan's rural electrification plans include large-scale solar thermal and small-scale solar photovoltaic power generation given its access to an average of more than 10 hours of sunshine per ...



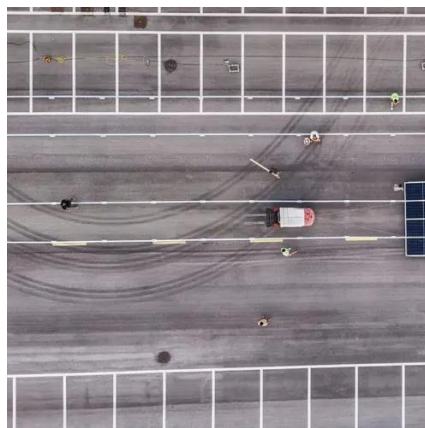
## South Sudan 3 mw solar power plant

Juba Solar PV Park is a ground-mounted solar project which is planned over 25 hectares. The project is expected to generate 29,000MWh electricity and supply enough clean energy to power 58,000 ...



### [Power plant profile: Juba Solar PV Park, South Sudan](#)

Juba Solar PV Park is a ground-mounted solar project which is planned over 25 hectares. The project is expected to generate 29,000MWh electricity and supply enough clean energy to power ...



## Juba Solar Power Station

There are plans to build new generation stations and to import electricity from neighboring Ethiopia, Sudan and Uganda, but the civil war has hindered progress in that direction.



## Juba Solar Power Station Explained



The Juba Solar Power Station is a proposed 20MW solar power plant in South Sudan. The solar farm is under development by a consortium comprising Elsewedy Electric Company of Egypt, Asunim Solar ...



### [South Sudan: First major solar energy, BESS plant launched](#)

A public-private partnership in South Sudan has launched the country's first major solar power plant and Battery Energy Storage System (BESS) in the capital Juba, where it is expected to ...

## **POWER PLANT PROFILE JUBA SOLAR PV PARK SOUTH SUDAN**

South Sudan's rural electrification plans include large-scale solar thermal and small-scale solar photovoltaic power generation given its access to an average of more than 10 hours of sunshine per ...





## Contact Us

---

For catalog requests, pricing, or partnerships, please visit:

<https://firmaskrzypek.pl>

Phone: +48 22 426 71 90

Email: [info@firmaskrzypek.pl](mailto:info@firmaskrzypek.pl)

Scan the QR code to access our WhatsApp.

