



How many inverters are needed for 50mw photovoltaic





Overview

Typically, you only need one inverter for your solar panel system, but for larger setups, you may need multiple inverters or microinverters to optimize power conversion. The number of inverters you need for your solar system depends on the system's size, type of inverter, and. Calculate the correct inverter size for your solar panel system. Inverter Size = MAX (Array Capacity × 1. 25) for safety margin This formula has been verified by certified solar engineers and. There are two broad classes of inverters: For 50 Mw plant, one Block of 858 tables having capacity of 6. So, total such 8 blocks are required to reach 50Mw AC As mentioned above 160Kw inverter is used in this 50Mw plant. Most. Different inverter brands (like Huawei 100kW, Growatt 100kW, or Deye 100kW) have different MPPT inputs, DC ratios, and grid connection requirements. This is why corporate buyers, EPCs, and tender based projects often require support from a professional engineering team.



How many inverters are needed for 50mw photovoltaic



Inverter Sizing Calculator

How to use this calculator: Enter your solar array capacity and load requirements to determine optimal inverter size.

How many grid tie inverters are needed for a large

Based on the power output and other factors such as cost, installation requirements, and compatibility with the solar panel configuration, select the appropriate inverter capacity.



Complete Solar Inverter Sizing Guide

Get it right and your system runs smoothly for years. In this guide, you'll learn what size solar inverter you need, how to size an inverter for solar systems step by step, how panel output ...

[Solar Inverter Size Calculator , Inverter Sizing Tool](#)

Calculate the optimal inverter size for your solar system. Determine the right inverter capacity based on panel array size, system configuration, and power requirements.



Inverter Size Calculator - self2solar

Optimize your solar system by calculating the ideal inverter size. Simply input panel specs for a recommended inverter power range that ensures efficiency and safety today!

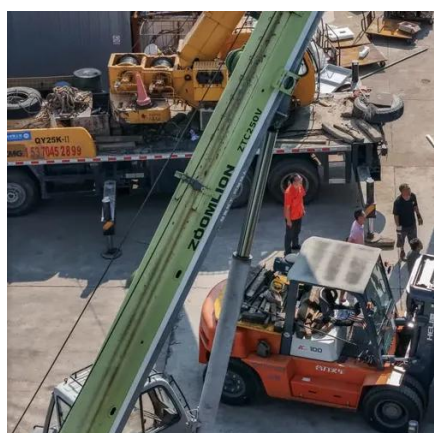
Design of 50 MW Grid Connected Solar Power Plant

Abstract-This paper aimed at developing a conventional procedure for the design of large-scale (50MW) on-grid solar PV systems using the PVSYST Software and AutoCAD.



[How Many Inverters Do You Really Need for a Large Commercial ...](#)

When companies plan a commercial solar system or an industrial solar power system, one of the biggest challenges is determining how many inverters, how many panels, and what ...



[How Many Inverters Do I Need for Solar](#)



[Panels? Find Out Fast](#)

Typically, you only need one inverter for your solar panel system, but for larger setups, you may need multiple inverters or microinverters to optimize power conversion. The number of ...



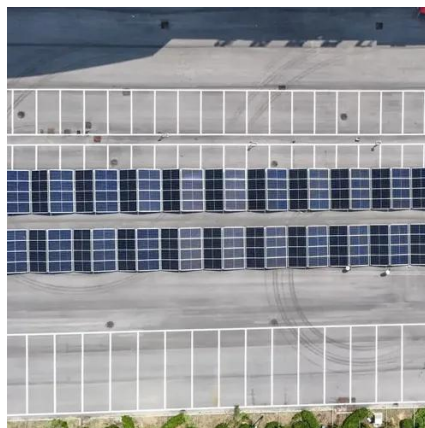
[How to Choose the Right Size Solar Inverter: Step-by-Step with Real](#)

Here's how inverter sizes usually correlate: Panels: 3,000 - 6,000 W. Inverter: 3,000 W to 5,500 W. Panels: 6,000 - 10,000 W. Inverter: 5,500 W to 8,000 W (some size down to 5 kW ...)



[How Many Inverters Do You Need for Your Solar System?](#)

Small residential systems often need just one inverter, while larger arrays, multiple roof orientations, or shaded installations may require multiple inverters or microinverters for optimal ...





Contact Us

For catalog requests, pricing, or partnerships, please visit:

<https://firmaskrzypek.pl>

Phone: +48 22 426 71 90

Email: info@firmaskrzypek.pl

Scan the QR code to access our WhatsApp.

