



How long does the inverter stay outdoors





Overview

In most off-grid solar systems, the inverter solar off grid will generally need to be replaced roughly every 10–12 years. This interval can shift considerably depending on factors such as component quality, environmental conditions, and the consistency of maintenance. An inverter is an electronic device that converts DC (direct current) power from a battery or solar panel into AC (alternating current) power, which is what most household appliances use. This conversion process allows you to power devices and appliances from a DC source, making it an essential. Yes, you can leave your inverter ON all the time if it's working under the rated capacity. Depending on the model, even when off, it can run at a very low capacity to dehumidify. As long as the energy bills aren't killing you, stay comfortable by using your new system. As a rule, inverters designed for outdoor use may be installed either outdoors or indoors, however indoor inverters can only be installed indoors. With consistent maintenance, certain premium units may keep running for over 15 years.



How long does the inverter stay outdoors

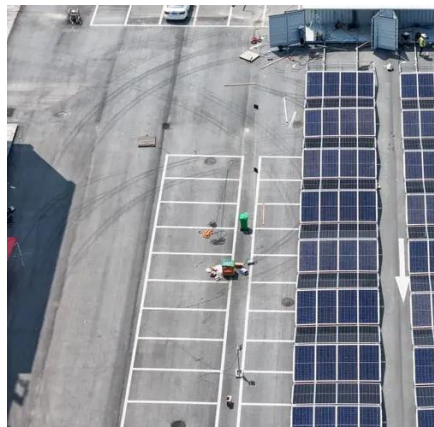
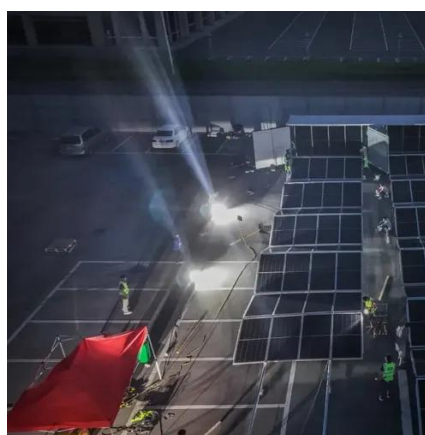


Can Solar Inverters Be Installed Outside?

Solar inverters can be installed outdoors and indoors, but always remember that the installation location should be waterproof, moisture-proof, dust-proof, avoid direct sunlight, and ...

How to Calculate How Long an Inverter Will Last

How long an inverter lasts depends on the battery and load. This simple guide explains how to calculate inverter runtime of any size.



[How Long Do Solar Inverters Last?----Off-Grid Inverter Lifespan](#)

In most off-grid solar systems, the inverter solar off grid will generally need to be replaced roughly every 10-12 years. This interval can shift considerably depending on factors such as ...

[Powering On: The Pros and Cons of Leaving Your Inverter On All the ...](#)

Leaving your inverter on all the time can be safe as long as it is installed and maintained properly. However, it's essential to ensure that your inverter is designed for continuous operation and ...



Can an inverter be installed outdoors?

While most grid-tied inverters are designed for outside installation, they should not be mounted in direct sunlight, as this will degrade their efficiency. In addition to the lost output, the lifetime of the unit is ...



Am I better off leaving split type inverter AC on 24/7? Or

Inverters are designed to have long run times. Depending on the model, even when off, it can run at a very low capacity to dehumidify. As long as the energy bills aren't killing you, stay comfortable by ...



Can a home inverter be used outdoors?

If you're going to use the inverter outdoors, you need to make sure it's protected from the elements. You can use a weatherproof enclosure or install it in a sheltered area.



Optimal Solar Inverter Placement for



Efficiency & Longevity

A common solution for outdoor setups is to mount the inverter under an eave or protective canopy, ensuring it remains cool and safe while maintaining easy access for maintenance.



- ✓ 50KW/100KWH
- ✓ HIGHER POWER OUTPUT IN OFF-GRID MODE
- ✓ CONVENIENT OPERATION & MAINTENANCE
- ✓ PRE-WIRED

How Long Can an Inverter Run Continuously?

Yes, you can leave an inverter running 24 hours a day, provided it is properly sized, maintained, and connected to a reliable power source. Inverters are designed to convert DC power ...

Can I leave My Inverter ON All the Time?

The inverter battery keep gets draining even if you turn off the inverter. So it would not be a wise decision to keep the inverter off when not in use. Over time the energy stored in the inverter ...





Contact Us

For catalog requests, pricing, or partnerships, please visit:

<https://firmaskrzypek.pl>

Phone: +48 22 426 71 90

Email: info@firmaskrzypek.pl

Scan the QR code to access our WhatsApp.

