



# How high are the regulations for photovoltaic panels on roofs





## How high are the regulations for photovoltaic panels on roofs



### Permitting and Inspection for Rooftop Solar

Permitting and inspection are required before a solar array is allowed to produce electricity on the grid. Generally, local governments require solar installers to obtain a permit for rooftop panels before they ...

### [Do You Need a Permit to Install Solar Panels? Complete 2025 Guide](#)

This comprehensive guide will walk you through everything you need to know about solar panel permits in 2025, including when they're required, the application process, costs, timelines, and ...



### [Code Requirements for Solar Photovoltaic \(PV\) Systems](#)

3.1.1.1 Solar PV systems installed on top of a roof where the space between the solar PV panels and the roof has no use and no potential use are generally considered equipment.



### [Solar Panel Rules in Your State: What Homeowners Need to Know](#)

Before installing solar panels, check your local zoning laws and HOA regulations regarding solar access rights. Many states require HOAs to accommodate solar installations, though ...



## 12.8V 200Ah

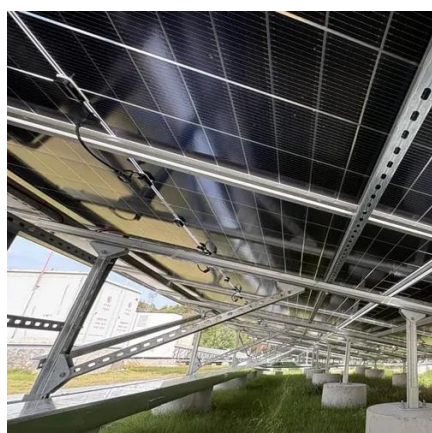


### [FAQ: Residential roof installation requirements for the USA](#)

Engineers, designers, installers, and manufacturers need to stay on top of jurisdictional code changes to ensure their products and systems will operate safely. Local regulations will vary, ...

## 2025 Single-Family Solar PV

There are five exceptions that exclude single family buildings from the solar PV requirements, or reduce the required system size: No PV system is required if minimum solar PV system size specified by ...



## Residential Solar Panel Requirements

When installing photovoltaic panels on one- and two-family homes, it's important to understand the requirements for access pathways and the requirements for setback from the ridge, ...

## Rules for Rooftop Solar



For roofs where PV panels cover up to 33% of the total area in plan view (essentially, as seen from above), the panels must be at least 18 in. away from a horizontal ridge on both sides to create the 36 ...



### Solar Panel Height Above Roof: Optimal Clearance and Installation

For commercial or residential designs that require roof access beneath panels, elevated arrays may be installed at 24-48 inches to allow people and equipment to pass safely.

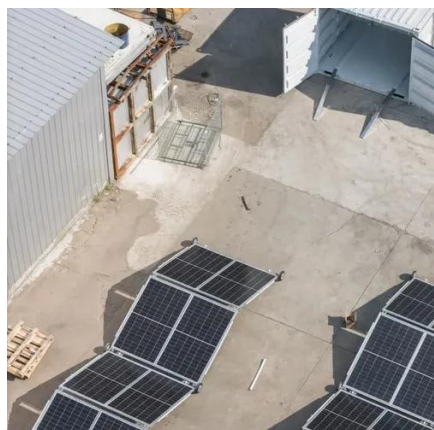
## Permitting and Inspection for Rooftop Solar

What Are Permitting and Inspection? Why Are Permitting and Inspection Important? Seto Research in Permitting and Inspection Solar permitting and inspection refer to two processes that need to happen before a solar array can receive permission to interconnect to the grid and start producing electricity. Generally, local governments require a homeowner's solar installer/contractor to obtain a permit for rooftop panels before they can be installed. After the PV system is installed, see more on energy.gov Colton, CA - Official Website [PDF]



## Code Requirements for Solar Photovoltaic (PV) Systems

3.1.1.1 Solar PV systems installed on top of a roof where the space between the solar PV panels and the roof has no use and no potential use are generally considered equipment.



## **Building Codes for Solar Panel Installation**

In this article, we'll dive deep into the ins and outs of building codes for solar panel installation, covering everything from structural integrity and electrical safety to fire prevention and ...



## Contact Us

---

For catalog requests, pricing, or partnerships, please visit:

<https://firmaskrzypek.pl>

Phone: +48 22 426 71 90

Email: [info@firmaskrzypek.pl](mailto:info@firmaskrzypek.pl)

Scan the QR code to access our WhatsApp.

