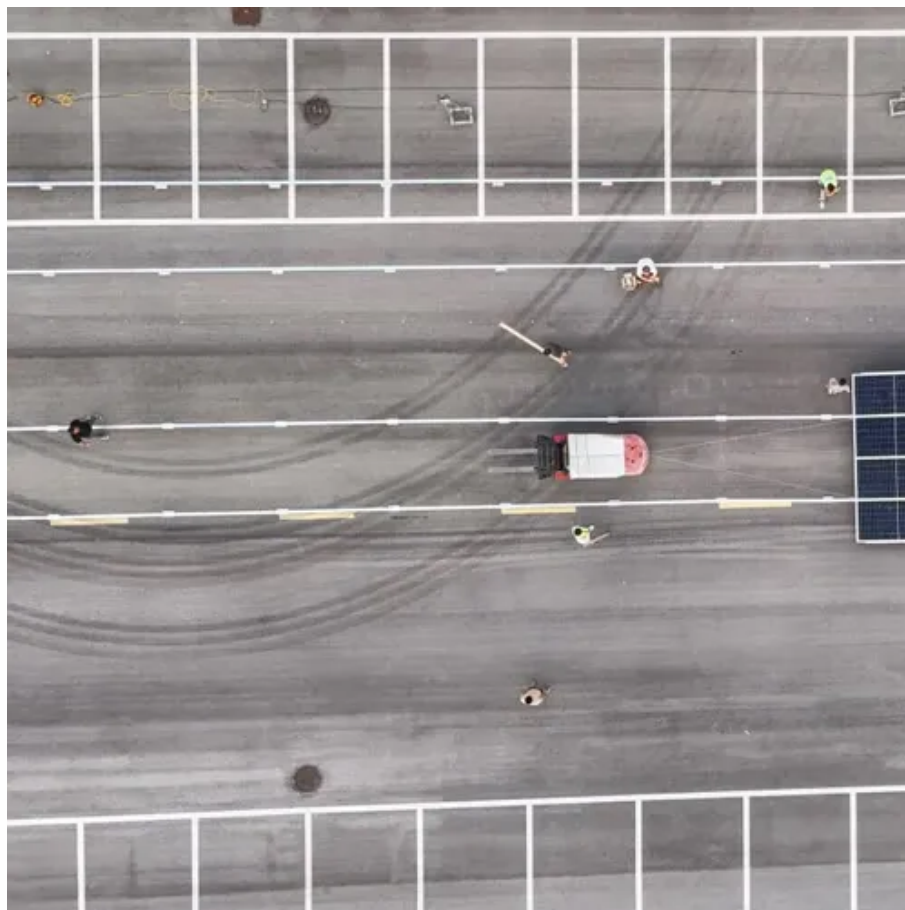




# How big should the solar diode be





## Overview

---

While choosing the right diode size for your project, consider the packet size, and voltage rating and evaluate the maximum forward current. In this article, we will discuss how. This is the maximum amount of current that can flow through the diode in the forward direction. Here's what to keep in mind: 1. If the diode's current rating is too low, it may fail under high loads, causing damage to your system. How big and how many do I need?

I bought about a hundred cells. although I need a better multimeter in order to test them (I will have it soon) they are supposed to generate about 4. Another crucial element to consider is the. To add diodes to solar panels effectively, a few critical steps must be taken which ensure optimal performance and safety. Understanding the Purpose of Diodes, 2. Proper Installation Techniques.



## How big should the solar diode be



### [Optimal Diode Count in a Solar Panel Setup - MotorBeast](#)

In determining the optimal diode count for a solar panel, one must first consider the size and capacity of the panel. The bigger the panel size and capacity, the more diodes it will require to ...

### [How to Connect Diode to Solar Panels \(diode Types & how to ...](#)

The size of your solar system: The size of your solar system is the primary factor in determining what size diode you need. If you have a large solar system, you will need a larger diode to handle the ...



### [Best Diodes for Solar Panels: Top Picks for Reliable PV Performance](#)

Selecting the right diode for a solar panel system is essential to prevent backflow, protect components, and maintain efficient power delivery. This guide highlights five top diodes and diode ...



## How big a diode should I add to a solar panel

Simple fact: a string of diodes, properly sized to a solar panel array, will practically hold the maximum power point (or voltage of max power, vMP) of a solar panel



## Diodes. How big and how many do I need?

However, I can't seem to find any information describing what strength of diode I should use. I want to protect the cells from backflow and bypass cells that may be shadowed briefly.

## Diodes for Solar Panels

In this article, we'll explore the critical role of diodes in solar panels, focusing on how they work, why they're essential, and how to select the right diode for your solar setup.



## [How big a diode should I use for home solar power supply](#)

It is necessary for solar panels to use Diodes to prevent current from flowing back into the battery when light is too weak. For this purpose, a 3 amp or 8 amp ...



## How to add diodes to solar panels ,



## NenPower

Determining the appropriate size of diodes for solar panels primarily involves understanding the electrical specifications of your system. First and foremost, consult with the solar ...



### [What Size Diode Do I Need? , Finding Your Perfect Diode Fit](#)

In this article, we will discuss how to determine the appropriate diode size for your specific application, taking into account voltage requirements and other important considerations.



## Contact Us

---

For catalog requests, pricing, or partnerships, please visit:

<https://firmaskrzypek.pl>

Phone: +48 22 426 71 90

Email: [info@firmaskrzypek.pl](mailto:info@firmaskrzypek.pl)

Scan the QR code to access our WhatsApp.

