



# How big should a locker be to accommodate a fan





## Overview

---

Calculate the proper fan size for your room by entering the room details below. The calculator will determine the minimum CFM (Cubic Feet per Minute) required for proper airflow and ventilation. Choosing the right fan size is crucial for maintaining air circulation and. Properly sizing a fan to your specific room size and type is an important step in optimizing comfort and air exchanges in the space. Install a fan with a 44-inch sweep in rooms from 144 to 225 square feet. Tip: Ceiling fan blades should be at least 18. Measure your room's square footage, then match it to a fan blade span from a sizing chart—this ensures the fan can circulate enough air without overwhelming the space. A fan that's too small leaves warm. That's why using a Room Fan Size Calculator is the smartest way to determine the ideal fan diameter based on your room's size. When using a 24-inch fan as a misting fan, keep.



## How big should a locker be to accommodate a fan



### Determining the Right Size Fan

To allow the mist to flash evaporate properly, the fan should be mounted at least 10 feet high, with about 3 to 4 feet of clearance. As fan sizes decrease, so does the number of misting ...

### Room Fan Size Calculator

It uses room dimensions to recommend a fan diameter (typically in inches) that matches your space perfectly. The basic formula for choosing a fan size is based on the square footage of your room. To ...



### [What size fan do I need for my room and How to position fans to cool ...](#)

This comprehensive guide explores the intricacies of how to position fans to cool room wall fans for optimal air circulation, ensuring a cool and comfortable environment tailored to your needs.

### [Locker Size and Configuration: A Comprehensive Guide](#)

Lockers should be positioned at a height that is comfortable for the intended users, taking into account factors such as age and physical abilities. The Americans with Disabilities Act (ADA) provides ...



50KW modular power converter



**Flexible Configuration**

- Modular Design, Expanding as Required
- Small/light, Well-Mounted
- Available in Rugged Air Enclosure



**Powerful Function**

- Support PV/ESS
- Grid Support, Equipped with SVG Technology
- On-Grid and Off-Grid Operation



**Reliable Protection**

- Outdoor IP65 Design
- Sufficient Protection Functions Equipped

## Fan Count Calculator

Determine fan quantity based on room size, ceiling height, and ventilation requirements. We use CFM calculations and room coverage standards to compute the right number of fans for your residential or ...

## How to Measure for a Ceiling Fan

Install a fan with a 44-inch sweep in rooms from 144 to 225 square feet. Install a fan with a 52-inch sweep in rooms from 225 to 400 square feet. Larger rooms may need more than one fan. ...



## [Locker Dimensions: Choosing the Right Sized Locker for Your Space](#)

Using smaller lockers can allow you to maximize the number of lockers; however, it'll reduce total locker space. While size and dimensions are huge factors when deciding on your ...



## Room Fan Size Calculator: What Size



## Fan Do I Need?

Calculate the right room fan size (CFM) for your room. Our calculator helps determine the proper ventilation requirements based on room size and desired airflow.

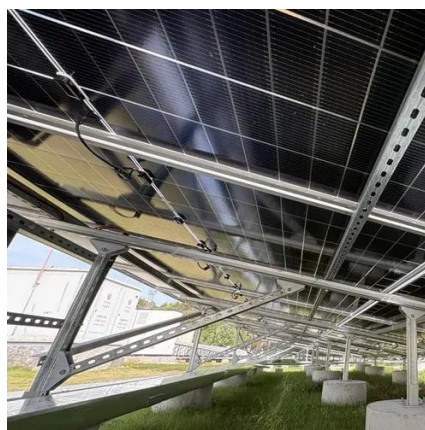


## [Fan Sizing Guide: How to Determine Fan Size for Any Room](#)

Measure your room's square footage, then match it to a fan blade span from a sizing chart--this ensures the fan can circulate enough air without overwhelming the space.

## King Electric

This fan calculator is used to calculate the CFM or cubic feet per minute of air exchange that is required in a building. Whether exhausting air or bringing fresh air into a structure, this calculator should help ...





## Contact Us

---

For catalog requests, pricing, or partnerships, please visit:

<https://firmaskrzypek.pl>

Phone: +48 22 426 71 90

Email: [info@firmaskrzypek.pl](mailto:info@firmaskrzypek.pl)

Scan the QR code to access our WhatsApp.

