



# How big a battery should a 45w monocrystalline solar panel be equipped with





## Overview

---

If you need 10 kWh daily, select a battery with a 12 kWh capacity, allowing for 80% depth of discharge. Grid-connected systems often need 1-3 lithium-ion batteries. Next, factor in your. To determine the battery size for solar, first calculate your daily energy consumption. By inputting specific details about your energy consumption, this calculator provides tailored insights into the solar. How many days do you want your home to have power if there's no sun at all to recharge the battery (e. Also the charge controller type and desired charge time in peak sun hours into our calculator to get. Choosing the right battery capacity for your solar setup isn't guesswork—it's about knowing your solar energy needs.



## How big a battery should a 45w monocrystalline solar panel be equip

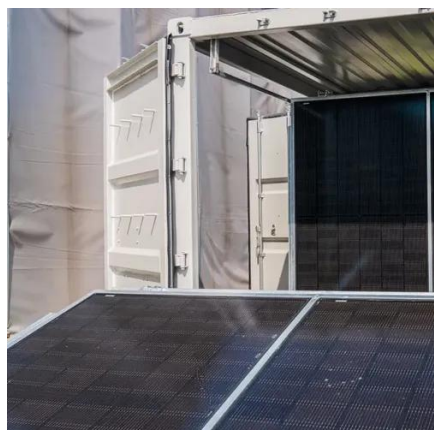


### Solar Panel Size Calculator

To calculate battery capacity for a solar system, divide your total daily watt-hours by depth of discharge and system voltage to get amp-hours ...

### Solar Panel and Battery Sizing Calculator

A Solar Panel and Battery Sizing Calculator helps you determine the optimal size of solar panels and batteries required to meet your energy needs.



### [How big a battery should a 45w monocrystalline solar panel be ...](#)

How To Calculate Solar Panel Battery And Inverter: A Step-by Unlock the full potential of your solar energy system with our comprehensive guide on calculating the right size for your battery and inverter.

### [What Size Battery for Solar Panels: A Comprehensive Guide to ...](#)

Discover how to choose the right battery size for your solar panel system in our comprehensive guide. Learn the key factors that influence battery capacity, such as daily energy ...



## Cheat Sheet for Sizing Your Solar Battery System

This cheat sheet will guide you through the essential steps to properly size a solar battery system for your home because let's face it...it's confusing and complicated.

### [Free Solar Battery Sizing Calculator](#), PUMA SUNERGY

Unsure what size solar battery you need? Learn the key factors for battery sizing and use our free solar battery sizing calculator to find the perfect fit for your home's energy needs.



### [How to Size Batteries for Solar Panel Installations](#)

Standard solar batteries are 10 kWh, but battery sizes and usable watts vary. To size a battery for solar, know how much energy you use, what your panels produce, and how much backup ...

### [How Big A Battery Do I Need For Solar?](#)



## Sizing Tips For Off-Grid

To determine the battery size for solar, first calculate your daily energy consumption. If you need 10 kWh daily, select a battery with a 12 kWh capacity, allowing for 80% depth of discharge.



## **Solar Panel Size Calculator**

Use our solar panel size calculator to find out the ideal solar panel size to charge your lead acid or lithium battery of any capacity and voltage. For example, 50ah, 100ah, 200ah, 120ah.

## DIY Solar Calculator: Size Panels, Batteries & Inverter

Find out how many solar panels, batteries, and inverter capacity you need for your off-grid solar system. Going solar doesn't have to be confusing. This free DIY solar calculator makes it ...



## **How to Calculate Battery Capacity for Solar System**

To calculate battery capacity for a solar system, divide your total daily watt-hours by depth of discharge and system voltage to get amp-hours needed. Battery capacity depends on your ...



## Contact Us

---

For catalog requests, pricing, or partnerships, please visit:

<https://firmaskrzypek.pl>

Phone: +48 22 426 71 90

Email: [info@firmaskrzypek.pl](mailto:info@firmaskrzypek.pl)

Scan the QR code to access our WhatsApp.

