



Goodwe 10kW single phase inverter





Goodwe 10kW single phase inverter

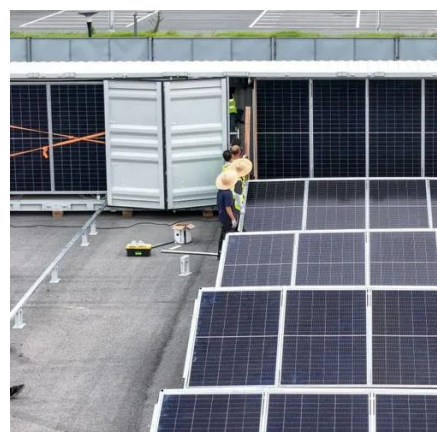


Single-phase inverter 10kW Goodwe GW10K-MS

Ideal inverter for residential photovoltaic installations with a complete design. Surplus management, 24-hour consumption monitoring and quiet operation in a modern equipment with the highest safety ...

GOODWE 10KW SINGLE phase inverter , PV Warehouse

This inverter is compatible with bifacial modules and outstandingly, as its maximum current input reaches 12.5A per string. Its light weight allows for an effortless installation.



MS G3 Series

Users can enjoy smart energy management with 24-hour load consumption monitoring enabled by GoodWe HomeKit 10001 or GM1000. Dry contact in the inverter is available for various home load ...

GoodWe MS Series 5-10KW Split Phase 3 MPPT ...

The MS Series of 5-10kW single phase inverter with 3 MPPTs for complex ...



The GoodWe ES Uniq Series 10kW single-phase Hybrid Inverter

The ES Uniq Series single-phase Hybrid Inverter line from GoodWe is specifically designed for residential applications, providing cost-effective energy storage solutions with a capacity of 10kW.



GoodWe GW10K-EHA-G20 Hybrid Inverter . ESA 3-10kW Battery ...

The ESA 3-10K Hybrid Inverters sit at the heart of GoodWe's ESA all-in-one residential storage platform (3-10 kW inverter, 5-48 kWh usable). Purpose-built for the ESA ecosystem, these single-phase units ...



OSW , Simplifying Your Solar Business

GoodWe All in one 10Kw Single Phase Inverter 200% Oversizing 4MPPTs 1 String per MPPT w/built-in meter w/Wifi w/Backup w/Grid Forming w/Changeover switch w/Battery base;GW-GW9.999K-EHA ...



Goodwe ES Uniq 8KW 10KW 12KW Single



[Phase with Wifi IP66 ...](#)

Key attributes Output Type Single Inverter
Efficiency 98.0% Place of Origin Anhui, China
Model Number GW3-12K-ES-C10-002 Brand Name Goodwe
Input Voltage 60 ~ 550v Output Voltage 220 / 230 / ...

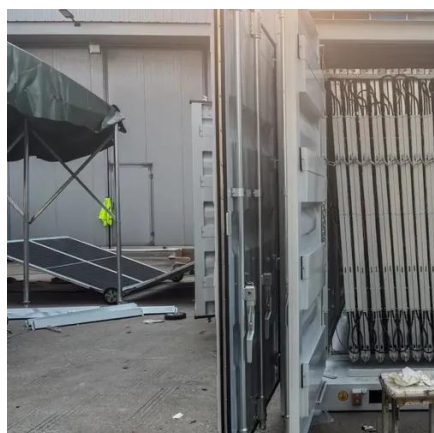


[GoodWe ES Uniq GW10K-ES-C10 10kw Hybrid Solar Inverter \(Single ...](#)

The GoodWe ES Uniq GW10K-ES-C10 is a state-of-the-art single-phase hybrid inverter, specifically engineered for residential energy storage systems. Designed to support modern solar solutions, it ...

[GoodWe MS Series 5-10KW Split Phase 3 MPPT Inverter for Sale](#)

The MS Series of 5-10kW single phase inverter with 3 MPPTs for complex rooftops is a powerful and versatile solution for the expanding needs of residential usage. It is truly a champion over the ...



Goodwe 10KW Single Phase Hybrid Solar Inverter

GoodWe ES Uniq 10kW Hybrid Inverter combines on-grid, off-grid, and backup modes in one unit with touchscreen control, 20A charge/discharge, parallel support, and wide battery compatibility. Ideal for ...



Contact Us

For catalog requests, pricing, or partnerships, please visit:

<https://firmaskrzypek.pl>

Phone: +48 22 426 71 90

Email: info@firmaskrzypek.pl

Scan the QR code to access our WhatsApp.

