



German base station energy storage battery





Overview

RWE is building Germany's largest battery storage facility to date at the Gundremmingen energy site. The facility will feature 400MW of power output and a storage capacity of 700 megawatt-hours, utilising the existing grid infrastructure from the now-decommissioned. Germany's grid-scale battery buildout is accelerating. Growth remains slower than in more mature markets, such as Great Britain. 2m), the German energy group said on Wednesday.



German base station energy storage battery

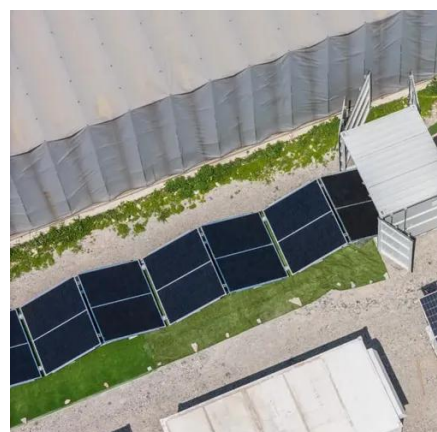


[At least 78 GW of large battery storage already approved in Germany](#)

BDEW found that there are currently pending grid connection applications for large battery storage systems (≥ 1 MW) totaling more than 720 GW. Grid connections for an additional 78 ...

[RWE breaks ground on 400-MW battery at German nuclear site](#)

RWE AG (ETR:RWE) has started building what it says will be its home country's largest battery energy storage system (BESS), a facility of 400 MW/700 MWh in Bavaria that will be installed ...



[RWE breaks ground on Germany's largest battery storage facility](#)

This state-of-the-art battery facility will house more than 200 containers of lithium-iron phosphate battery cells and utilise ultra-fast inverters, enabling rapid response times to supply or ...

[RWE breaks ground on 400 MW + 700 MWh battery storage in Germany](#)

RWE has started construction of Germany's largest battery energy storage system (BESS) at the Gundremmingen energy site in Bavaria. The 400 MW plant will offer a storage ...



[Groundbreaking ceremony: RWE is constructing Germany's largest battery](#)

RWE is building Germany's largest battery storage facility to date at the Gundremmingen energy site. The 400-megawatt plant will have a storage capacity of 700 megawatt hours and will use ...



[Battery Storage: Accelerating Germany's Transition to Renewable ...](#)

In addition to battery packs, BESS consist of two other main components: an energy conversion system and an energy management system, which monitors the power flow and the battery's temperature.



[RWE Builds Germany's Largest Battery Storage in Bavaria](#)

RWE is constructing Germany's largest battery storage facility at the Gundremmingen energy site in Bavaria. The facility will have a power capacity of 400 megawatts and a storage ...

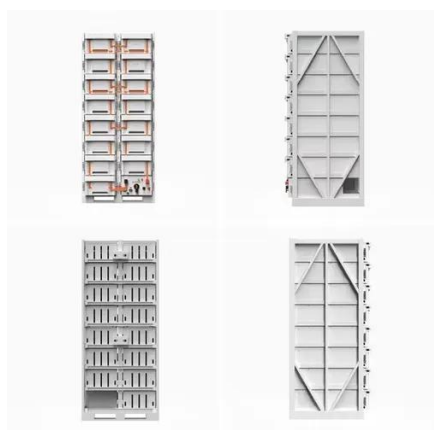


RWE starts building Germany's



largest BESS

Power firm RWE has launched construction on a 400MW/700MWh BESS project in Bavaria, Germany, the largest being built in the country.



[Germany Battery Buildout Report: Battery capacity hits 2 GW](#)

Germany's grid-scale battery buildout is accelerating. Installed capacity hit 2 GW last quarter - and could reach 3 GW before the end of 2025. Growth remains slower than in more mature markets, such as ...

[RWE Starts Building Germany's Largest Battery Storage](#)

RWE starts building Germany's largest battery storage in Bavaria, aiming for operation by 2028, using an existing nuclear power plant grid connection.





Contact Us

For catalog requests, pricing, or partnerships, please visit:

<https://firmaskrzypek.pl>

Phone: +48 22 426 71 90

Email: info@firmaskrzypek.pl

Scan the QR code to access our WhatsApp.

