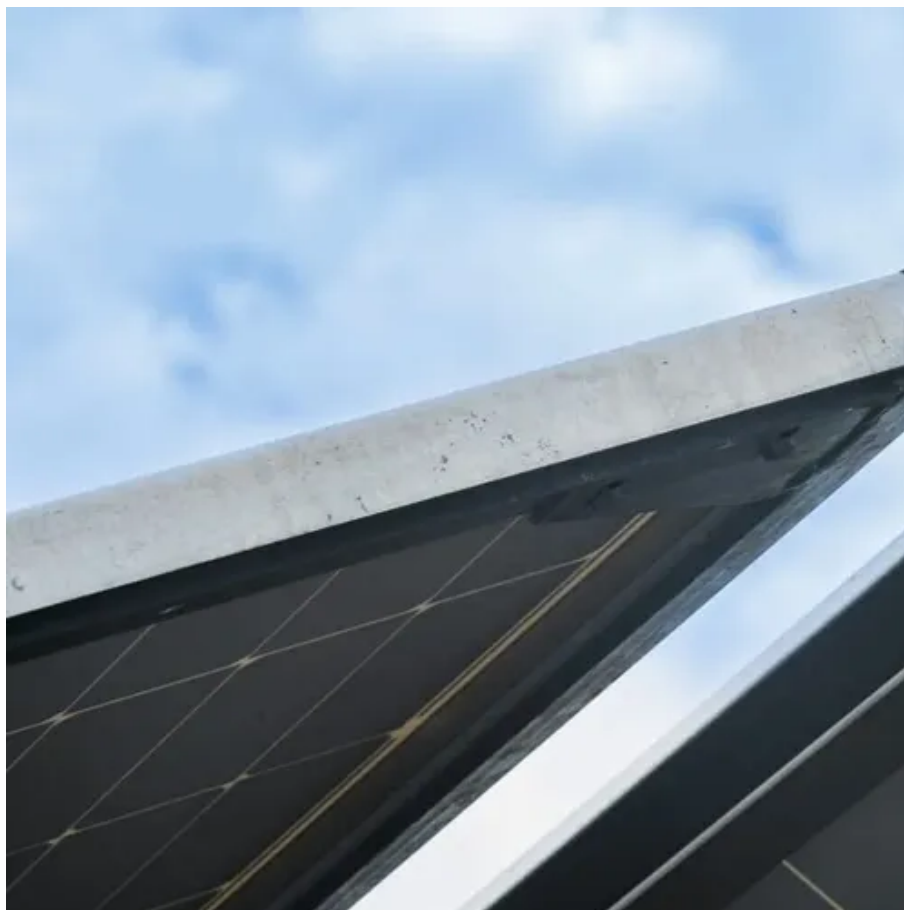




GCL 545W photovoltaic panel size





Overview

We do our best to provide information such as the GCL-M10/72H-545 panel dimensions, datasheet, warranty information, wattage and more wherever possible. We have an. Superior Power Density: 545W panels deliver 35-45% more power generation per panel compared to standard 400W modules, making them ideal for space-constrained installations while reducing overall system costs through fewer required panels and simplified installation. Advanced Half-Cell PERC. This supplier mainly exports to Turkey, Iraq, and Thailand, offering services like project design and quality control in collaboration with Fortune 500 companies. They have full customization capabilities and product certifications. To better ensure the safety of your goods, professional. The 545 model typically delivers 545W power output with 21.3% module efficiency, but let's unpack what these numbers truly mean. When evaluating photovoltaic panel 545 specifications, you're not just reading technical jargon - you're decoding the DNA of solar efficiency. Imagine trying to buy a car. PNG SOLAR is located in Hefei City, Anhui Province, which is one of the main production bases of the photovoltaic industry in the world. Jinko, JA, GCL, Sungrow and BYD all sit here. PNG SOLAR has been certified by Alibaba several years ago.



GCL 545W photovoltaic panel size



[Understanding Photovoltaic Panel 545 Specifications for Optimal Solar](#)

With the rise of bifacial panel designs and microinverter compatibility, the 545 series sits at an interesting crossroads. Its 41.5mm frame thickness accommodates newer mounting systems, while the 12-bit IV ...

[GCL 525W 530W 540W 535W 545W 550W 555W 560W Solar ...](#)

Application:Solar Power System;Solar cell:144cells;Warranty:30 Years;Weight:26.8kg;OEM Order:Acceptable;Brand :GCL;Dimension:2278x1134x30mm;J-Box:IP-68;Cell ...



[GCL System Integration Technology Co. Ltd. Solar Panel Information](#)

See the table below for available information we have about GCL System Integration Technology Co. Ltd. solar panels. We do our best to provide information such as the panel dimensions, datasheet, ...

545W Mono Solar Panel 2279x1134x35mm Order ...

Solar Systems Solar Panels 545W Mono Solar Panel 2279x1134x35mm Order Only Pallet TIER 1



[GCL Solar Panel 555W 550W 545W 540W PV Solar Module ...](#)

Key attributes Industry-specific attributes Cell size 182mmx182mm Type PERC, Half Cell, Bifacial, ODM, Monofacial Panel Efficiency 21.5% Warranty 25 Years



[GCL Solar Panel High Quality 545W 550W 555W 560W 565W ...](#)

Key attributes Industry-specific attributes Cell size 182mmx182mm Type Half Cell Panel Efficiency 21.87%



[Astronergy Longi Jinko Trina Gcl 555W 550W 545W 575W 580W ...](#)

Astronergy Longi Jinko Trina Gcl 555W 550W 545W 575W 580W Bifacial Solar Panel, Find Details and Price about Solar Solar Panel from Astronergy Longi Jinko Trina Gcl 555W 550W 545W 575W 580W ...



GCL-M10/72H-545 545W Solar Panel



Information

See the table below for available information we have about GCL System Integration Technology Co. Ltd. GCL-M10/72H-545 solar panels. We do our best to provide information such as the GCL ...



[NEW GCL Monocrystalline PV Solar Panel 545W 550Watt 560W ...](#)

NEW GCL Monocrystalline PV Solar Panel 545W 550Watt 560W 565Watt N-type Bifacial Double Glass Solar Panels for Solar Systems

[545 Watt Solar Panels: Complete 2025 Buyer's Guide & Review](#)

Comprehensive guide to 545W solar panels including top models, specifications, installation requirements, and ROI analysis. Compare JA Solar, LONGi & more.





Contact Us

For catalog requests, pricing, or partnerships, please visit:

<https://firmaskrzypek.pl>

Phone: +48 22 426 71 90

Email: info@firmaskrzypek.pl

Scan the QR code to access our WhatsApp.

