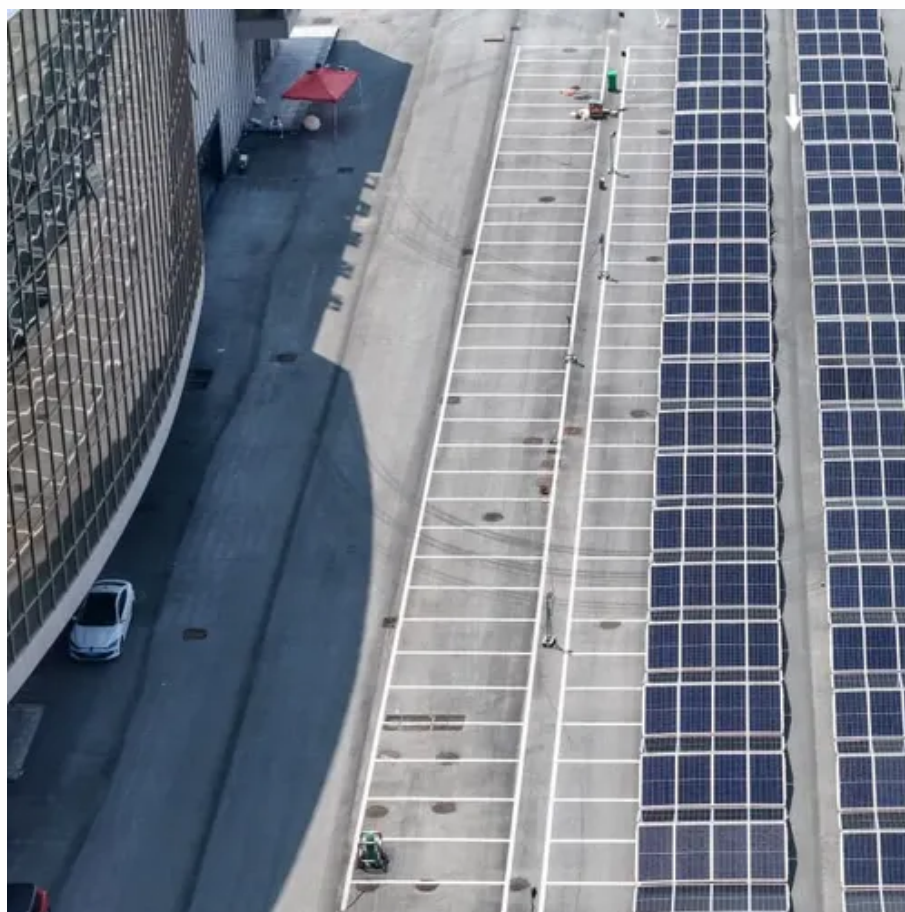




Fixed wing wind turbine





Overview

Airborne Wind Energy is an emerging technology that harvests wind energy with flight systems connected via a tether to a generator at the ground. [1] An installation consists of the systems needed to capture the wind's energy, point the turbine into the wind, convert mechanical rotation into electrical power, and. This work presents a fast model for estimating the net power output of fixed-wing ground-generation airborne wind energy systems in the conceptual design phase.



Fixed wing wind turbine



[Power curve modelling and scaling of fixed-wing ground ...](#)

This work presents a fast model for estimating the net power output of fixed-wing ground-generation airborne wind energy systems in the conceptual design phase.

ENERGY TRANSFER FROM AIRBORNE HIGH ALTITUDE ...

This third part of the paper deals with the design of a mass-produced fixed wing system for power generation. A fixed wing drone with a minimal airframe was conceptually designed for this purpose.



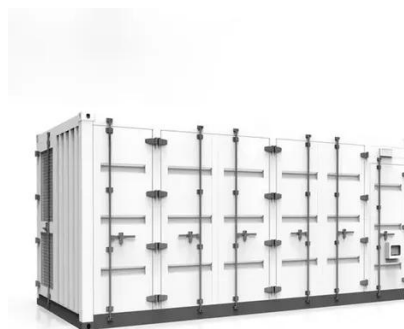
[Radia proposes gargantuan 'Windrunner' jet for wind ...](#)

Amid a massively ambitious project to build the world's largest ...



[Radia proposes gargantuan 'Windrunner' jet for wind turbine transport](#)

Amid a massively ambitious project to build the world's largest fixed-wing aircraft - designed to fly wind turbines directly to wind farms - US energy firm Radia maintains it is taking a



Scaling effects of fixed-wing ground-generation airborne wind energy

We compare the effects of three different aircraft masses and two sets of nonlinear aerodynamic coefficients for aircraft with wing areas ranging from 10 to 150 m² on operating ...

Fixed-Speed Wind Energy Conversion System

In this type, the wind turbine can store the varying wind power as rotational energy by controlling the speed of the turbine. Thus, the stress on the mechanical structure is minimized, and the generated ...



Starting procedure of a flying wing for an airborne wind energy system

Makani Power has developed a fixed-wing flight system that takes off in a vertical position, similar to a quadcopter. A horizontal stabilizer and differential thrust stabilize the flight system's ...

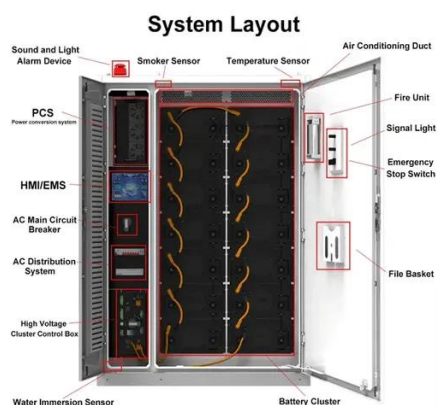
Power curve modelling and scaling of



fixed-wing ground-generation

To analyse the scaling behaviour, we present a kite mass estimation model based on the wing area, aspect ratio, and maximum tether force. The computed results are compared with 6-degree-of

...



Wind turbine design

An installation consists of the systems needed to capture the wind's energy, point the turbine into the wind, convert mechanical rotation into electrical power, and other systems to start, stop, and control ...



Contact Us

For catalog requests, pricing, or partnerships, please visit:

<https://firmaskrzypek.pl>

Phone: +48 22 426 71 90

Email: info@firmaskrzypek.pl

Scan the QR code to access our WhatsApp.

