



# Er34615 solar container lithium battery pack





## Er34615 solar container lithium battery pack

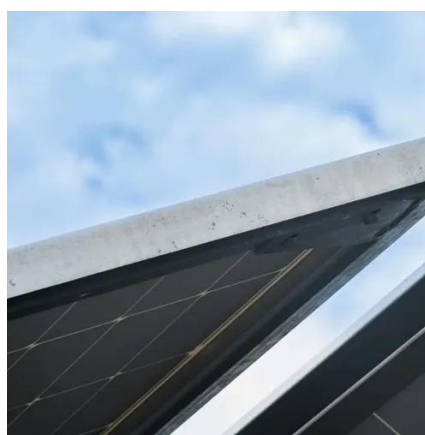


### ER34615

Complete our brief RFQ and click submit to receive your battery pack quote. © 2022 - Zeus Battery Products , All rights reserved.

### 3.6V 19Ah ER34615+SPC1520 Li-SOCI2 Battery Pack

Discover the 3.6V 19Ah ER34615+SPC1520 Li-SOCI2 Battery Pack from Topwell Power. Designed for high-capacity and reliable performance, ideal for industrial, IoT, and energy-demanding applications. ...



### [ER34615M 3.6V 43500mAh Lithium Thionyl Chloride Battery Pack](#)

Unleash unprecedented power with the ER34615M 3.6V 43500mAh Lithium Thionyl Chloride Battery Pack. Encased in a durable plastic casing, this high-energy density battery provides ultra-long-lasting ...

### [ER34615-19000 PKCELL , Battery Products , DigiKey Marketplace](#)

Exact specifications should be obtained from the product data sheet. Due to restrictions, only ground shipment is allowed. In an effort to support the research and development needs of all customers, we ...



## Primary Lithium Battery

Primary Lithium Battery ER34615M 3.6V Lithium-thionyl chloride[Li-SOCI<sub>2</sub>] D-size Spiral cell Benefits High and Stable Voltage Energy Density up to 893Wh/L Long Shelf Life (less than 1% per year after ...

## 3.6V 19Ah ER34615+SPC1520 Li-SOCI<sub>2</sub> Battery Pack

Discover the 3.6V 19Ah ER34615+SPC1520 Li-SOCI<sub>2</sub> Battery ...



## LiSOCI<sub>2</sub> ER34615-2P Lithium Battery Pack

Higher energy density and lower weight. Superior drain capacity. Stainless steel container. Hermetic glass-to-metal sealing. Non-flammable electrolyte. Laser welding.

[ER34615-19000 PKCELL , Battery](#)



## [Products , DigiKey ...](#)

Exact specifications should be obtained from the product data sheet. Due to ...



### **ER34615-Li-SOCI2 Batteries-EVE Energy**

ER34615 HOT EVE ER34615 Li/SOCI2 battery 3.6V 19000mAh Cylindrical cell Smart Meter/Smart Life/Automotive Electronics/IoT Solution

### **ER34615+SPC1550-ER Battery + SPC Solution**

EVE SPC solution combines ER lithium cells with SPC capacitors, delivering both high energy density and strong pulse power. Perfect for smart metering, IoT, and wireless communication.



### **Er34615 li soci2 battery pack**

Unlike rechargeable batteries, er34615 li soci2 battery pack are designed for single-use, making them ideal for situations where continuous power is necessary. Their ability to deliver energy efficiently and ...

**Amazon : Er34615m-t1 3.6v 14.5ah**



Replacement Battery for DSC WT4911, WT4911B,  
WT4911Bm, WT4911R, WT8911, Impassa Wireless  
Siren, Wireless Outdoor Siren, P/N: ER34615M-T1,  
WT4911BATT 14.5Ah/3.6V





## Contact Us

---

For catalog requests, pricing, or partnerships, please visit:

<https://firmaskrzypek.pl>

Phone: +48 22 426 71 90

Email: [info@firmaskrzypek.pl](mailto:info@firmaskrzypek.pl)

Scan the QR code to access our WhatsApp.

