



Electrical load management systems





Overview

Load management, also known as demand-side management (DSM), is the process of balancing the supply of electricity on the network with the electrical load by adjusting or controlling the load rather than the power station output.

Brief history Modern utility load management began about 1938, using ripple control. By 1948 ripple control was a practical system in wide use. The Czechs first used ripple control in the 1950s. Early on, since electrical energy is a form of that cannot be effectively stored in bulk, it must be generated, distributed, and consumed immediately. When the load on a system approaches the maximum generating capacity, the decision is made to curtail load, it is done so on the basis of system reliability. The utility in a sense "owns the switch" and sheds loads only when the stability or reliability of the electrical distribution system is threatened.



Electrical load management systems



[Understanding Electrical Load Management in Large Buildings](#)

What is Electrical Load Management? Electrical load management refers to the process of monitoring, controlling, and optimizing the power consumption of a building's electrical systems.

Inhab® Load Manager

The Inhab® Load Manager continuously monitors home energy consumption. It can be used with any brand load center or large residential loads like water heaters, heat pumps, pool pumps, and EV ...



Electrical Load Management System

The document outlines key components of Electrical Load Management Systems (ELMS), including Real-Time Load Monitoring (RTLM), Automated Load Control (ALC), and Priority-Based Load ...

Mastering Electrical Load Management

Learn the fundamentals of electrical load management and how to optimize your electrical systems for maximum efficiency and reliability.



Load management

Load management, also known as demand-side management (DSM), is the process of balancing the supply of electricity on the network with the electrical load by adjusting or controlling the load rather ...



Load Management Devices

Load management devices are a simple and reliable solution for monitoring network parameters such as voltage, current, power, phase sequence and network consistency. The resulting transparency ...



Residential load management

A safe and reliable solution offering alternative versus paying for an expensive and time-consuming electrical service upgrade. The intelligent residential load management solution, sheds the EV ...



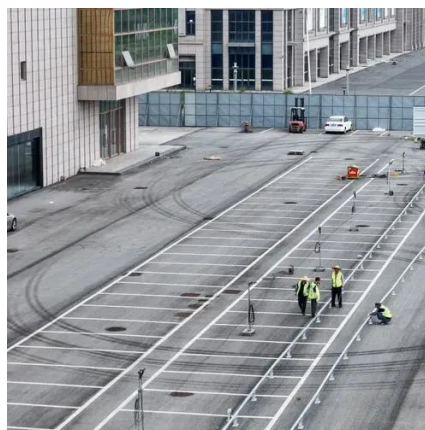
[Load Management System , Load](#)



Preservation , Demand Side Management

...

Preserve system operation against disturbances, loss of generation, and unplanned outages. Load Management solutions provides a suite of applications for load preservation, time-of-use efficiency, ...



What is Load Management? Everything You Need to Know

Load management provides continuous protection by ensuring your home never exceeds safe electrical limits. Modern systems are recognized by the National Electric Code (the rulebook ...

Residential Load Controllers vs. Smart Electrical Management

With a residential load controller, the load controls your every move during peak hours, whereas a smart energy management platform responds to your goals and immediate needs.





Contact Us

For catalog requests, pricing, or partnerships, please visit:

<https://firmaskrzypek.pl>

Phone: +48 22 426 71 90

Email: info@firmaskrzypek.pl

Scan the QR code to access our WhatsApp.

