



Does the photovoltaic module need to be lifted when it is reworked





Overview

And when it's time to start moving the modules to be installed, always have two people lift and carry each module. This becomes increasingly imperative as the heavier, larger-format modules become more prevalent at utility-scale project sites. One side of the module package should be close to the retainer (Figure1); When using a forklift to move palletized packing. If your modules are damaged on arrival, notify the driver immediately, notify carrier and LONGi staff within 24 hours of delivery, and provide a record with detailed information within 48 hours of delivery. See claims and warranties for full details. Always insert the fork from the short side of. A module with broken glass or torn Backsheet cannot be repaired and must not be used since contact with any module surface or the frame can produce electrical shock.



Does the photovoltaic module need to be lifted when it is reworked

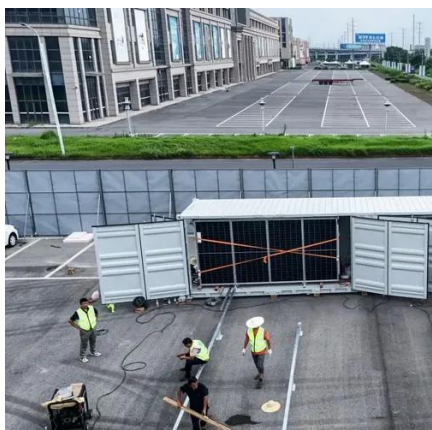


[New LONGi Field Guide Outlines Best Practices for Module ...](#)

And when it's time to start moving the modules to be installed, always have two people lift and carry each module. This becomes increasingly imperative as the heavier, larger-format modules ...

[230525 Handling Storage and Unpacking Instructions guide v3](#)

Then, when the forks are into the short side of the pallet, and after they reach the bottom, lift the modules at an appropriate height (the tilt angle required to lift the modules must be lower than 2°).



Packaging Datasheet1

When using a forklift to move palletized packing boxes to the operation area, the forklift shall be slowly and steadily lifted and put down gently during loading and unloading, and the modules shall avoid ...

STORAGE AND UNPACKING INSTRUCTION OF ...

This manual is for Jinko solar PV module storage and unpacking instructions. To ensure the safety of loading, unloading, unpacking and storage of PV modules, please read this manual carefully.



PV Module Unpacking, Handling and Storing Guide

Do not carry a module alone; always use two people to lift and carry. The LONGi team of industry veterans and experts is excited to partner with you for success from arrival to installation with ...



[When to Consider Repowering Your PV Plant: Engineering Insights ...](#)

Many solar PV assets commissioned in the early 2010s are approaching a critical juncture. As components age and technology advances, asset owners are increasingly weighing the benefits of ...



PV Modules Unloading & Unpacking Manual

When using a forklift to move palletized packing boxes to the operation area, the forklift shall be slowly and steadily lifted and put down gently during loading and unloading, and the modules shall avoid ...



Repowering for solar installations



Repowering is the process of restoring a photovoltaic (PV) system to full, or even greater, efficiency. This can be achieved in a number of ways: Firstly, regular cleaning of the system is essential - ideally ...

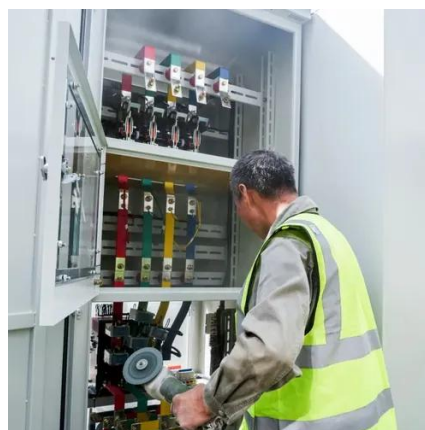


Solar PV Module Handling, Storage, Installation

Please do not remove the intermediate-module before removing the last module. Warning: For safety reasons never manipulate or move a partially filled carton, without stabilizing the remaining modules ...

Unloading Handling & Storage Manual

Avoid lifting modules by their cables or junction box. Keep the stand supporter stable during unpacking to prevent tilting. Do not lean modules against unstable objects like poles or mounting columns. ...





Contact Us

For catalog requests, pricing, or partnerships, please visit:

<https://firmaskrzypek.pl>

Phone: +48 22 426 71 90

Email: info@firmaskrzypek.pl

Scan the QR code to access our WhatsApp.

