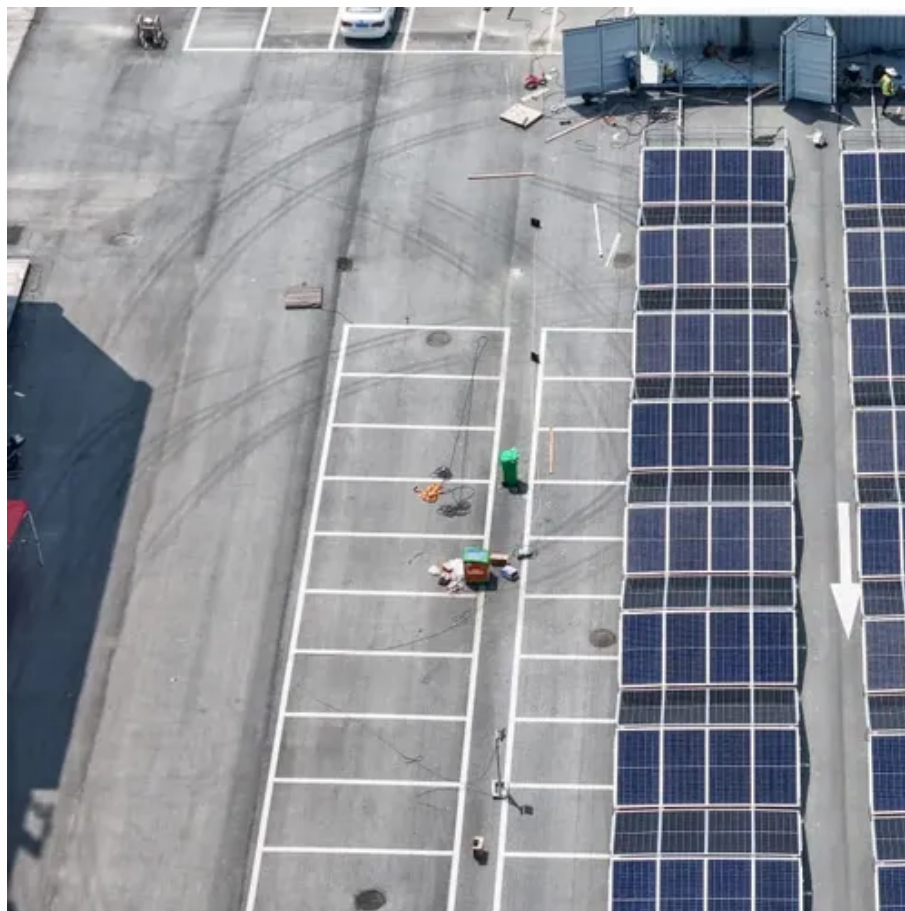




Does snowfall affect solar power generation





Overview

A snowy winter doesn't keep your solar power system from being able to offset your reliance on the aging electrical grid and your utility bills. In fact, a light dusting of snow across your panels will have almost no impact. While many assume that snow drastically reduces performance, the truth is more nuanced. More positives: many homeowners in cold-weather states see the most significant savings from going solar, and solar installers often lower their prices in winter during the winter months. Do solar panels actually work when it's cold and snowy?

Short answer: yes. Published estimates of energy losses range from 1 to 12 percent annually, with monthly losses as high as 100 percent, depending on location and weather conditions; in addition, snow. What happens when solar panels get covered in snow in winter?

Does some sunlight make it through the snow?

Does the power output of the panels drop considerably?

Is it worth it to go scrape the snow off the panels if temperatures will remain below freezing?

How hard is this to do for rooftop solar.



Does snowfall affect solar power generation



How Does Snow Affect Solar Production

Well-designed solar systems are built to handle snow and ice, and in many cases, bounce back faster than people expect thanks to a tilting feature.

Do solar panels work in snow and during winter?

Not only do solar panels work in the snow, white snow can reflect light from the ground and help improve PV performance. Snow will only hurt solar production if your panels are covered ...



[How Does Snow Affect Solar Panels? Facts & Smart Solutions](#)

When snow blankets your solar panels, sunlight can't penetrate through it, preventing photovoltaic cells from producing power. Whether the snow on solar panels is dense or light, it can diffuse and scatter ...

Do solar panels work in snow and during winter?

Not only do solar panels work in the snow, white snow can reflect ...



[How Does Snow Cover Affect Solar Panel Power Output?](#)

Does snow cover affect voltage, current, or both? Make sure you keep other factors, like the time of day and solar panel orientation, constant as you change the thickness of the layer of snow. ...

[How Does Snow Affect Solar Panels and What Can You Do About it?](#)

Fortunately, you can limit the impact snow, and other winter precipitation has on your solar performance and still get the most return on your investment. With proper care and ...



[The Truth About Solar Panels in Winter Snow: Performance and Care](#)

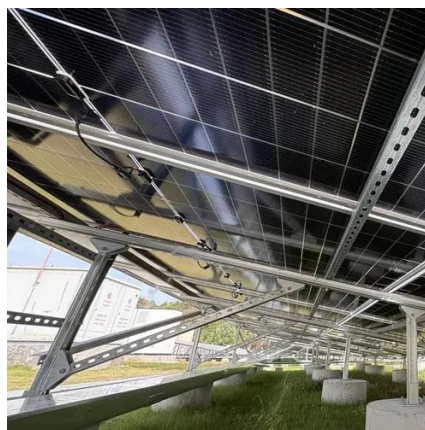
So, while snow does not cause solar panels to stop generating electricity, it does influence performance. When the modules are covered with a thick layer of snow, they allow too little ...

[How Does Snowfall Affect Solar Power](#)



Generation Efficiency?

According to the U.S. Department of Energy (DOE), solar panels can still generate energy during snowy conditions, but efficiency depends on snow accumulation, panel angle, and ...



Snow impact on PV performance: Assessing the zero

Solar photovoltaic (PV) technology has a great potential for renewable energy generation. However, in cold climates with heavy snowfall, PV systems performance might be significantly ...

How Does Snow Affect Solar Panels? Key Insights and Tips

In reality, while snow can reduce energy production, solar panels can still generate electricity even in cold weather. In fact, they often perform better in cooler temperatures, making ...



The Impact of Snow on PV Performance - Energy

Published estimates of energy losses range from 1 to 12 percent annually, with monthly losses as high as 100 percent, depending on location and weather conditions; in addition, snow creates excessive ...



Contact Us

For catalog requests, pricing, or partnerships, please visit:

<https://firmaskrzypek.pl>

Phone: +48 22 426 71 90

Email: info@firmaskrzypek.pl

Scan the QR code to access our WhatsApp.

