



Does snow affect solar panel power generation

1mwh (500kw/1mw)

AIR COOLING
ENERGY STORAGE CONTAINER





Overview

When snow completely covers your solar panels, the cells can't receive sunlight or gather energy. With proper care and maintenance, you should not experience any significant drop in your solar electricity generation due to snow. To do so, they begin by absorbing sunlight into the photovoltaic (PV) cells within solar panels. The panels then. What happens when solar panels get covered in snow in winter?

Does some sunlight make it through the snow?

Does the power output of the panels drop considerably?

Is it worth it to go scrape the snow off the panels if temperatures will remain below freezing?

How hard is this to do for rooftop solar. When snow covers your solar panels, sunlight can't reach the photovoltaic cells. Snow Impact is Minimal: A comprehensive 5-year study by NAIT found that snow coverage results in only 3% annual energy loss - far less than the industry's traditional 20% estimate, making winter solar highly viable.



Does snow affect solar panel power generation

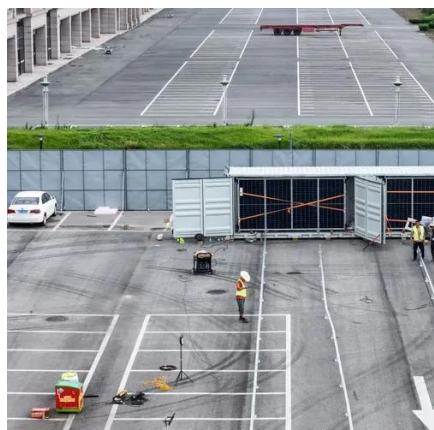


[How Does Snow Affect Solar Panels? Facts & Smart Solutions](#)

When snow blankets your solar panels, sunlight can't penetrate through it, preventing photovoltaic cells from producing power. Whether the snow on solar panels is dense or light, it can diffuse and scatter ...

Do solar panels work in snow and during winter?

Not only do solar panels work in the snow, white snow can reflect ...



[How Does Snowfall Affect Solar Power Generation Efficiency?](#)

When panels are covered with even a thin layer of snow, the ability to convert sunlight into electricity drops significantly. Thick or wet snow can block almost 100% of light, temporarily ...

[How Does Snow Affect Solar Panels? Key Insights and Tips](#)

In reality, while snow can reduce energy production, solar panels can still generate electricity even in cold weather. In fact, they often perform better in cooler temperatures, making ...

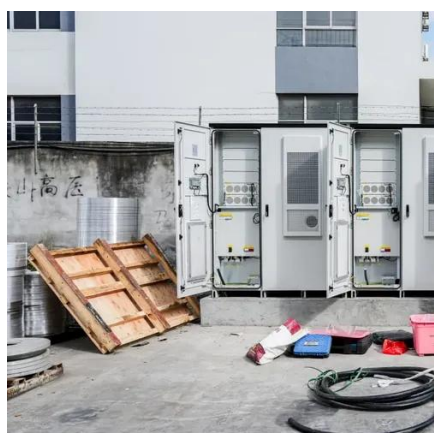


Do solar panels work in snow and during winter?

Not only do solar panels work in the snow, white snow can reflect light from the ground and help improve PV performance. Snow will only hurt solar production if your panels are covered ...

How Does Snow Cover Affect Solar Panel Power Output?

Does snow cover affect voltage, current, or both? Make sure you keep other factors, like the time of day and solar panel orientation, constant as you change the thickness of the layer of ...



Snow impact on PV performance: Assessing the zero

Solar photovoltaic (PV) technology has a great potential for renewable energy generation. However, in cold climates with heavy snowfall, PV systems performance might be significantly ...

Do Solar Panels Work In Winter Snow?



[Complete 2025 Guide](#)

Solar panels work effectively in winter snow with only 1-5% production loss. Learn why cold weather improves efficiency, safety tips for snow removal, and real performance data.



How Does Snow Affect Solar Production

Well-designed solar systems are built to handle snow and ice, and in many cases, bounce back faster than people expect thanks to a tilting feature.

[How Does Snow Affect Solar Panels and What Can You Do About it?](#)

Fortunately, you can limit the impact snow, and other winter precipitation has on your solar performance and still get the most return on your investment. With proper care and ...



[Will Solar Panels Work with Snow on Them? Facts & Myths](#)

Solar panels can still generate some electricity even when partially covered with snow. For instance, a case study in Minnesota showed that solar panels could produce about 30% of their ...



Contact Us

For catalog requests, pricing, or partnerships, please visit:

<https://firmaskrzypek.pl>

Phone: +48 22 426 71 90

Email: info@firmaskrzypek.pl

Scan the QR code to access our WhatsApp.

