



Does Duodoma solar container lithium battery match the inverter





Overview

When setting up solar energy systems or home energy storage, a common question arises: Are lithium batteries compatible with all inverters?

The short answer is no - proper inverter matching is crucial for optimal performance and safety. Matching a lithium solar battery with an inverter is a crucial step in setting up an efficient solar power system. Then you go to test it under a real load, and. click. - A 5 kW hybrid inverter typically pairs well with a 5-10 kWh battery. This guide explains compatibility factors, technical requirements, and practical tips to ensure seamless integration. Mistakes, however, can lead to reduced output, equipment damage, or safety.



Does Duodoma solar container lithium battery match the inverter



[How to match lithium battery with solar container inverter](#)

Integrating a solar inverter with a lithium battery can take your renewable energy setup to the next level. This combination allows for better energy storage, improved efficiency, and greater resilience during ...

[How to Choose the Right Inverter for a Lithium Battery System](#)

Learn how to select the right inverter for lithium battery systems, covering LiFePO4 compatibility, sizing, safety, solar integration, and long-term performance use.



[Can Lithium Batteries Work With Any Type of Inverter?](#)

The short answer is no - proper inverter matching is crucial for optimal performance and safety. Let's examine the key compatibility factors for lithium battery and LiFePO4 battery systems.



[The Ultimate Guide to Matching Your Lithium Battery and Inverter](#)

Conclusion: With that battery, you can run a 2500W inverter with a healthy safety margin. Its high cycle life and incredibly flat voltage curve mean it's a solid foundation for a powerful system.



[Are Hybrid Solar Inverters Compatible With All Battery Types?](#)

You just bought shiny solar panels and now plan to add batteries, but a big question pops up: will those batteries talk nicely with your hybrid solar inverters?

[How to Pair Batteries with Inverters: A Complete Guide for Solar ...](#)

Summary: Pairing batteries with inverters is critical for optimizing solar energy storage. This guide explains compatibility factors, technical requirements, and practical tips to ensure seamless integration.



[Battery and Inverter Sizing Guide 2025: How to Match Solar Storage](#)

Learn how to size and pair a battery with your solar inverter in 2025. Discover key ratios, examples, and Growatt solutions for optimal solar + storage system design.

Solar Inverter & Battery: Avoid DIY



Mistakes

Learn to connect solar inverters to LiFePO4 batteries correctly. Avoid common DIY errors like undersized cables and BMS mismatches for a safe, efficient system.

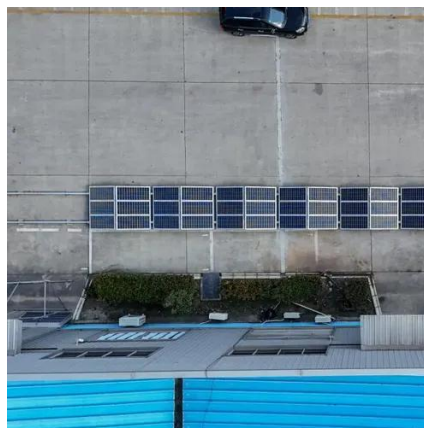


Does Duodoma lithium battery match the inverter

Answer: To choose the right inverter for lithium batteries, match the inverter's voltage and capacity to your battery's specifications, prioritize pure sine wave inverters for

[How do I match a lithium solar battery with an inverter?](#)

One of the most important factors when matching a lithium solar battery with an inverter is voltage compatibility. The voltage of the battery and the inverter must match. For example, if you ...





Contact Us

For catalog requests, pricing, or partnerships, please visit:

<https://firmaskrzypek.pl>

Phone: +48 22 426 71 90

Email: info@firmaskrzypek.pl

Scan the QR code to access our WhatsApp.

