



Does 5G base stations affect battery life





Does 5G base stations affect battery life

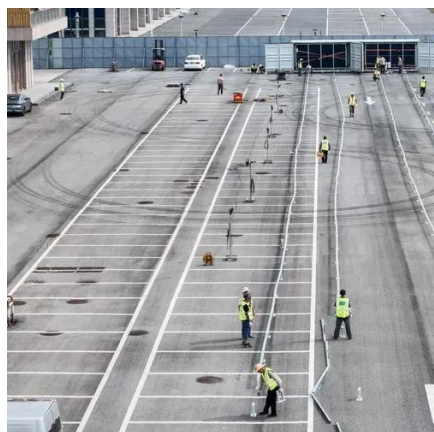


[5G Base Station Energy Storage Battery Data: Powering the Future of](#)

As of 2025, over 15 million 5G base stations worldwide require energy storage solutions smarter than your average AA battery [5] [8]. Let's explore why these unsung heroes of connectivity deserve their ...

Battery life and energy storage for 5G equipment

Fortunately, what can be expected with continuous 5G rollout is continuous improvements in battery performance. As 5G continues to expand across the globe, increasing the energy density and ...



[Why 5G Base Stations Need Energy Storage Batteries: A ...](#)

Did you know a single 5G base station consumes up to 3x more power than its 4G counterpart? As telecom operators race to deploy faster networks, energy storage batteries have become the unsung ...

[How 5G vs 4G Connection Modes Really Affect Your Phone's Battery Life](#)

Yes, 5G generally consumes more battery than 4G, especially in areas with weak signal or on older phones with separate 5G modems. On average, tests show 5G can drain 20-40% more ...



5G BTS Battery Lifespan: How Long It Lasts and How to Extend It

5G base stations are the backbone of nextgeneration networks, and battery constructions are their "heart." Every detail--from dedication to deployment and maintenance--directly influences ...



Does 5G Consume More Battery? Myths, Impacts on Smartphone ...

Yes, 5G consumes more battery. This happens because 5G networks use several radio bands at once. The advanced signal processing in 5G leads to higher power requirements. This ...



Does 5G use more battery power?

One major factor which affects battery life of devices operating on 5G is the proximity to base stations. 5G-enabled devices continuously communicate with these stations, which provide the ...



Does 5G use more battery on your



smartphone?

Yes, cellular technologies like 5G will always drain your battery faster than Wi-Fi. You see, the strength of a radio wave decreases exponentially as you move away from the base station.



5G Base Station Lithium Battery: Capacity and Discharge Rate ...

EverExceed's high-rate discharge LiFePO4 batteries are engineered to handle these demanding conditions, ensuring stable and efficient power delivery to 5G infrastructure.

Energy Consumption of 5G, Wireless Systems and the Digital Ecosystem

"A 5G base station is generally expected to consume roughly three times as much power as a 4G base station. And more 5G base stations are needed to cover the same area," -IEEE Spectrum, 5G's ...





Contact Us

For catalog requests, pricing, or partnerships, please visit:

<https://firmaskrzypek.pl>

Phone: +48 22 426 71 90

Email: info@firmaskrzypek.pl

Scan the QR code to access our WhatsApp.

