



Do energy storage batteries have to be fully charged and discharged





Overview

Generally, lithium-ion and NiMH batteries are ideally stored partially charged (around 40% - 60%), while lead-acid batteries should be stored fully charged. This risk also applies to vehicles that are rarely used, as the battery still requires attention even when the vehicle is not actively used. Therefore. A battery energy storage system (BESS) is an electrochemical device that charges (or collects energy) from the grid or a power plant and then discharges that energy at a later time to provide electricity or other grid services when needed. How are batteries connected to the electrical grid different from batteries in laptops and mobile devices?

. The persistent belief that lithium-ion batteries require full charge-discharge cycles stems from outdated nickel-cadmium era practices.



Do energy storage batteries have to be fully charged and discharged



Energy Storage: Safety FAQs

Cycles are the number of times the battery goes from fully (or nearly fully) charged to discharged (or fully discharged). The amount of time or cycles a battery storage system can provide regular charging ...

[How to Properly Store Lithium Batteries: Should They Be Full, Empty, ...](#)

While it may seem counterintuitive, storing a lithium battery at full charge (100%) or fully discharged (0%) can cause stress and accelerate the degradation of the battery cells.



Is Fully Discharging a Lithium Battery Bad?

Allowing a lithium-ion battery to discharge below its safe voltage limit (typically under 3.0V per cell) causes permanent chemical damage, reduces capacity, and may make the battery ...



[Lithium-ion battery storage: Maximizing Lifespan and Performance](#)

The storage of lithium-ion batteries poses certain questions, especially whether should lithium ion batteries be stored fully charged. This principle applies equally to consumer batteries and ...

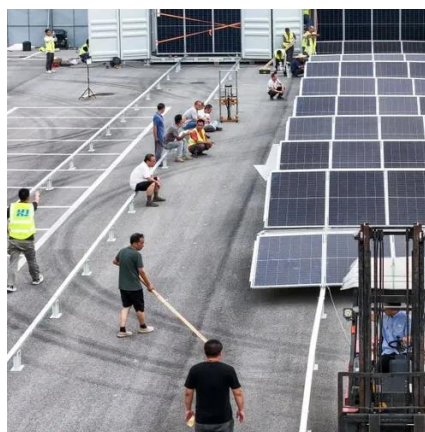


SECTION 2: ENERGY STORAGE FUNDAMENTALS

What is the reason for the characteristic shape of Ragone curves?

BU-501: Basics about Discharging

Batteries are seldom fully discharged, and manufacturers often use the 80 percent depth-of-discharge (DoD) formula to rate a battery. This means that only 80 percent of the available energy ...



Do lithium-ion batteries have to be fully charged and fully discharge?

The persistent belief that lithium-ion batteries require full charge-discharge cycles stems from outdated nickel-cadmium era practices. Modern Li-ion chemistry fundamentally differs-- partial ...

Should Batteries Be Stored Charged or



Uncharged? A Complete ...

This article will mainly discuss should batteries be stored charged or uncharged, ranging from understanding recommended storage methods, commonly used battery types, ideal storage ...



Grid-Scale Battery Storage: Frequently Asked Questions

State of charge, expressed as a percentage, represents the battery's present level of charge and ranges from completely discharged to fully charged. The state of charge influences a battery's ability to ...



How many times can the energy storage battery be charged and ...

Several intrinsic and extrinsic factors influence how many times an energy storage battery can go through its charge and discharge cycles. Usage patterns play a significant role in determining ...





Contact Us

For catalog requests, pricing, or partnerships, please visit:

<https://firmaskrzypek.pl>

Phone: +48 22 426 71 90

Email: info@firmaskrzypek.pl

Scan the QR code to access our WhatsApp.

