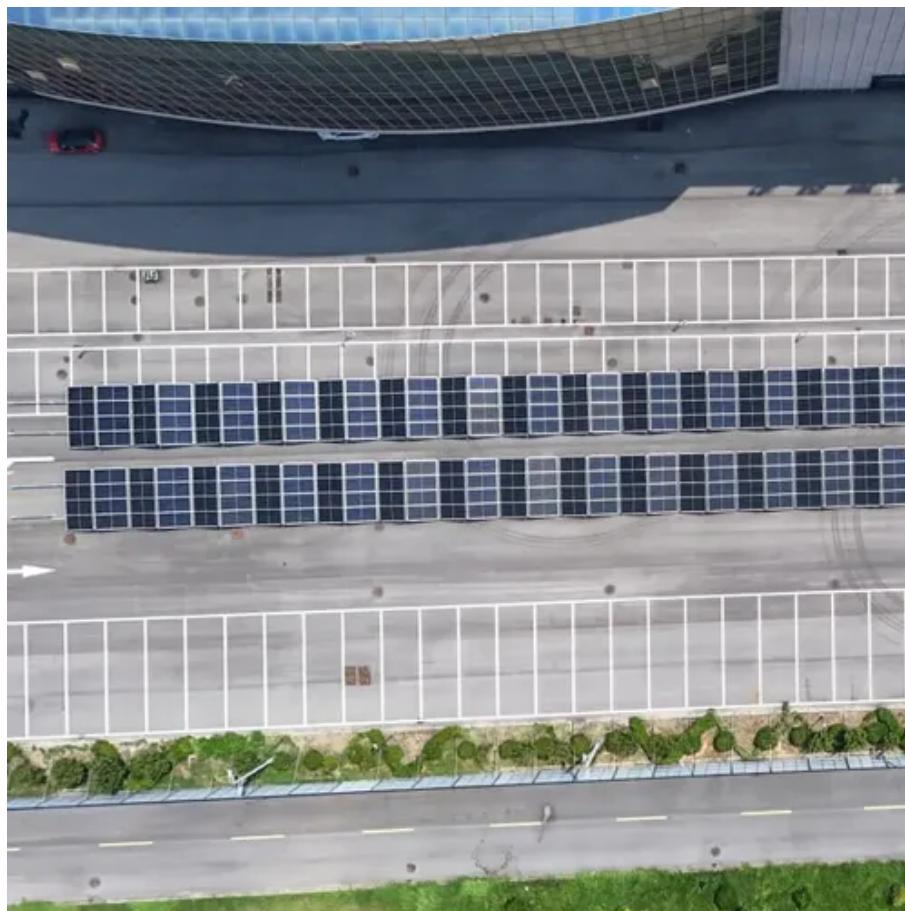




# Do big trees affect photovoltaic panels





## Overview

---

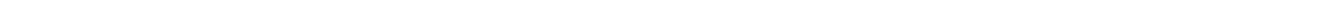
Trees can block sunlight from hitting your solar panels, which can substantially reduce their performance and energy production. Here's the good news: you don't need to clear-cut your property to start using solar panels. A little shade on your solar panels isn't the end of the world, but you don't want your trees to cover the entire array. A solar panel installation in your home can bring all sorts of benefits: lower electric bills, a smaller carbon footprint and even. Solar panels produce electricity by capturing sunlight and converting it into usable energy. Will the shade from your trees block the solar panels from producing energy?

Will branches and leaves fall from the trees and damage your solar panels?

Today, we're answering all your questions about whether or not solar panels will work if you have a lot of trees. Additionally, trees can help to clean the.



## Do big trees affect photovoltaic panels

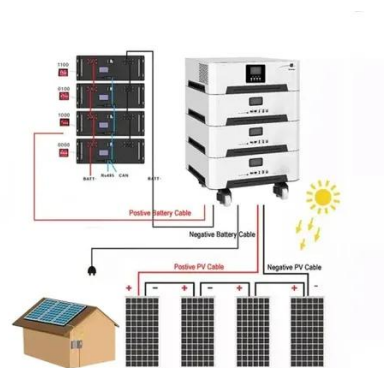


### Do Trees Block Solar Panels?

Learn how trees affect solar panels, including shading, reduced energy output, & ways to optimise efficiency to get the most from your solar energy system.

### Will Trees Affect My Solar Panels?

Trees can have a noticeable impact on solar panel performance. But proper design and placement, as well as safe tree maintenance, help prevent any energy loss down the line.



### Can Shade From Trees Affect Your Solar Panel Installation?

Can Shade From Trees Affect Your Solar Panel Installation? A little shade on your solar panels isn't the end of the world, but you don't want your trees to cover the entire array.

### Will Solar Panels Work On My House If I Have A Lot Of Trees?

Trees can have a noticeable impact on solar panel performance. But proper design and placement, as well as safe tree maintenance, help prevent any energy loss down the line.



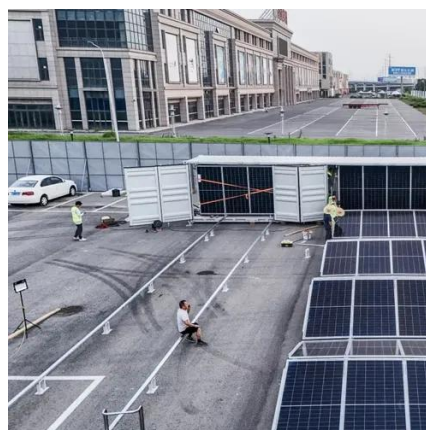
## The Effects of Trees on Residential Solar Panels

When trees cast too much shade on your panels, it affects their efficiency and effectiveness. Understanding the relationship between trees and solar panels is vital for maximizing your solar ...



## How do trees affect solar panels?

When a tree or its sprawling branches cast a shadow on solar panels, they essentially block a portion of the sunlight. This doesn't just reduce the amount of sunlight hitting a small section ...



## Do Trees Affect Solar Panels?

However, in most cases, tree placement will have no negative impact on solar panel output. If you're worried about this, you can place solar panels under trees without any problem at all. In fact, some ...



## [Solar Panels and Trees , How Do Trees](#)



## Impact Solar Panel ...

While yes, trees do impact solar panel performance, that doesn't mean going solar is impossible. With smart system design, strategic trimming, and the right technology, solar panels and ...



## **The effect of trees on solar panels + pros and cons**

Solar panels produce electricity by capturing sunlight and ...



## **The effect of trees on solar panels + pros and cons**

Solar panels produce electricity by capturing sunlight and converting it into usable energy. However, the presence of trees near solar panels can have a significant impact on their ...



## Will Solar Panels Work On My House If I Have A Lot Of Trees?

Unfortunately for some homeowners, trees and solar panels don't get along. Trees can block sunlight from hitting your solar panels, which can substantially reduce their performance and energy ...



## **How Trees and Shade Affect Solar**



## Panels

As your trees grow, they will encroach on your roof space, blocking sunlight from reaching your solar panels and reducing their energy production. The position of the trees in your ...





## Contact Us

---

For catalog requests, pricing, or partnerships, please visit:

<https://firmaskrzypek.pl>

Phone: +48 22 426 71 90

Email: [info@firmaskrzypek.pl](mailto:info@firmaskrzypek.pl)

Scan the QR code to access our WhatsApp.

