



Distance from solar-powered communication cabinet inverter to residents





Overview

I use clear rules from hundreds of ADNLITE projects. Economically, I recommend 30–50 m or less. Place the inverter near the array, then run AC to the house. Understanding solar panel inverter distance is particularly relevant for homeowners and businesses with specific space and safety considerations, such as those who prefer to store their solar battery and inverter in a separate, temperature-controlled environment like a guest house. Wire gauge must meet local codes. With high voltage dc used on modern solar systems the distance between panels and inverters can be quite far 100s feet possible. Engineer775 on YouTube recently posted a job where the array. How far away can an inverter be from the house switchboard?

Would 40 meters be a problem?

How big is the inverter?

It can be quite a long way just need to make sure the cabling can handle the current. Mines at least 20m away, in a different building, on a sub board. Multiple solar panels are connected in series to a single inverter in systems that use string inverters. Due to the cumulative effect of voltage drop across the series-connected panels, this. Costs rise and efficiency drops with distance.



Distance from solar-powered communication cabinet inverter to residence



[Distance Between Solar Panels and House: What You Need to Know](#)

I place a weather-rated inverter or an AC combiner near the array. For bigger sites, I raise the DC bus voltage (e.g., 600-1000 V designs with compliant gear) to reduce current and drop.

How Far Away Can Solar Panels Be From Inverter?

The ideal distance for your inverter from the solar panel array is within 25 feet, although it can extend up to 50 feet while still functioning properly. It's crucial to note that greater distances ...



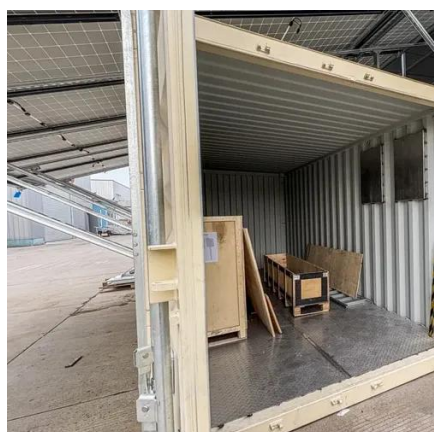
[How Far Can Solar Inverter be From Main Panel? , Get Answers](#)

The distance between the solar inverter and the main panel is determined by a number of factors, including cable length, inverter technology, and adherence to electrical codes.



How Far Can Solar Panels Be From Inverter

Ideally, solar panels should be as close to the inverter and charge controller as possible. In situations where the panels are roof-mounted, this typically translates to anywhere between 20 ...



[Solar Panel Inverter Distance: How Far Can They Be from Your ...](#)

Is This Setup Practical? In conclusion, managing your solar panel inverter distance by storing the inverter and battery in a guest house and running the lines to the main panel over 100 feet is ...

[Solar Panel Distance \(Battery + Charge Controller + Inverter/House\)](#)

Solar Battery storage systems should be within 20-30 feet, and you would mount the charge controller within a yard or meter of the batteries. Compact solar design is an essential part of ...



[Optimal Solar Inverter Placement for Efficiency & Longevity](#)

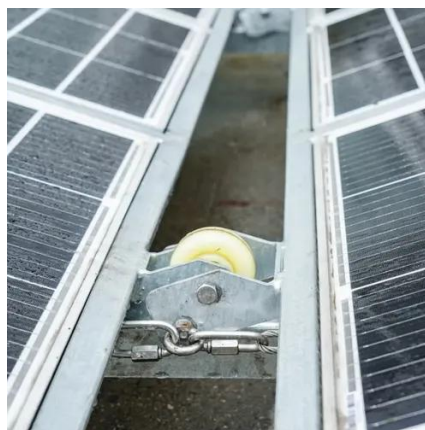
Discover expert tips on solar inverter placement to maximize efficiency, lifespan, and safety. Learn optimal locations, clearance, and installation best practices.

How far can an inverter be from the



switchboard?

How far away can an inverter be from the house switchboard? Would 40 meters be a problem?



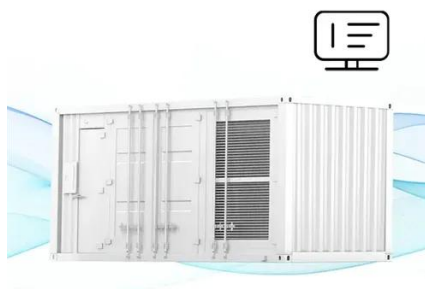
[Distances from panels to inverter , DIY Solar Power Forum](#)

With high voltage dc used on modern solar systems the distance between panels and inverters can be quite far 100s feet possible. Inverters and batteries should be close to the house to ...

Plan Distance Between Components

Follow the table below for maximum distances for wired communication between system components. Wire gauge must meet local codes.

FLEXIBLE SETTING OF MULTIPLE WORKING MODES





Contact Us

For catalog requests, pricing, or partnerships, please visit:

<https://firmaskrzypek.pl>

Phone: +48 22 426 71 90

Email: info@firmaskrzypek.pl

Scan the QR code to access our WhatsApp.

