



Design of liquid flow battery operating system for communication base station





Overview

This article clarifies what communication batteries truly mean in the context of telecom base stations, why these applications have unique requirements, and which battery technologies are suitable for reliable operations. It lays out low-voltage power distribution and conversion for a battery energy storage system and energy and assets monitoring - for a utility-scale battery energy storage system - and the necessary actions to adapt this reference design for the project requirements. ABB can provide support during all. Are liquid metal batteries a viable solution to grid-scale stationary energy storage?

With an intrinsic dendrite-free feature, high rate capability, facile cell fabrication and use of earth-abundance materials, liquid metal batteries (LMBs) are regarded as a promising solution to grid-scale. This work studies the optimization of battery resource configurations to cope with the duration uncertainty of base station interruption. We mainly consider the demand transfer and sleep mechanism of the base station and establish a two-stage stochastic programming model to minimize battery. What makes a telecom battery pack compatible with a base station?

Compatibility and Installation Voltage Compatibility: 48V is the standard voltage for telecom base stations, so the battery pack's output voltage must align with base station equipment requirements. **Modular Design:** A modular. Lithium batteries have emerged as a key component in ensuring uninterrupted connectivity, especially in remote or off-grid locations. These batteries store energy, support load balancing, and enhance the resilience of communication infrastructure.



Design of liquid flow battery operating system for communication bas



Optimization of Communication Base Station Battery Configuration

In the communication power supply field, base station interruptions may occur due to sudden natural disasters or unstable power supplies. This work studies the optimization of battery ...

Optimum sizing and configuration of electrical system for

This study develops a mathematical model and investigates an optimization approach for optimal sizing and deployment of solar photovoltaic (PV), battery bank storage and a diesel ...

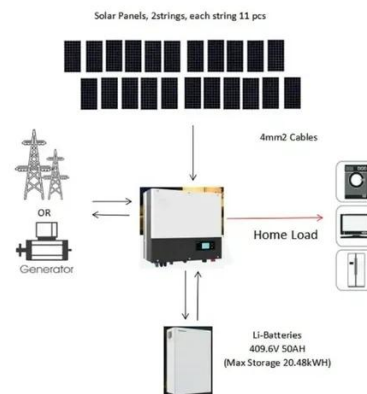


How Communication Base Station Energy Storage Lithium Battery ...

These batteries store energy, support load balancing, and enhance the resilience of communication infrastructure. Understanding how these systems operate is essential for stakeholders

Communication Batteries: Why Telecom Base Stations Have Unique ...

This article clarifies what communication batteries truly mean in the context of telecom base stations, why these applications have unique requirements, and which battery technologies are ...

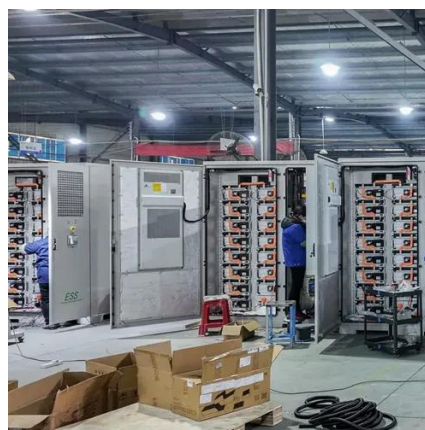


Optimization of Communication Base Station Battery Configuration

In the communication power supply field, base station interruptions may occur due to sudden natural disasters or unstable power supplies. This work studies the optimization of battery

Utility-scale battery energy storage system (BESS)

The main goal is to support BESS system designers by showing an example design of a low-voltage power distribution and conversion supply for a BESS system and its main components.



The scale of liquid flow batteries for communication base stations

In this article, the schedulable capacity of the battery at each time is determined according to the dynamic communication flow, and the scheduling strategy of the standby power considering the ...



**2MW / 5MWh
Customizable**

What is the construction scope of liquid



flow batteries for solar

A flow battery is an electrochemical battery, which uses liquid electrolytes stored in two tanks as its active energy storage component. For charging and discharging, these are



Communication base station liquid flow battery magnetic wind power

Feb 1, 2018 · The paper summarizes the features of current and future grid energy storage battery, lists the advantages and disadvantages of different types of batteries, and points out



Contact Us

For catalog requests, pricing, or partnerships, please visit:

<https://firmaskrzypek.pl>

Phone: +48 22 426 71 90

Email: info@firmaskrzypek.pl

Scan the QR code to access our WhatsApp.

