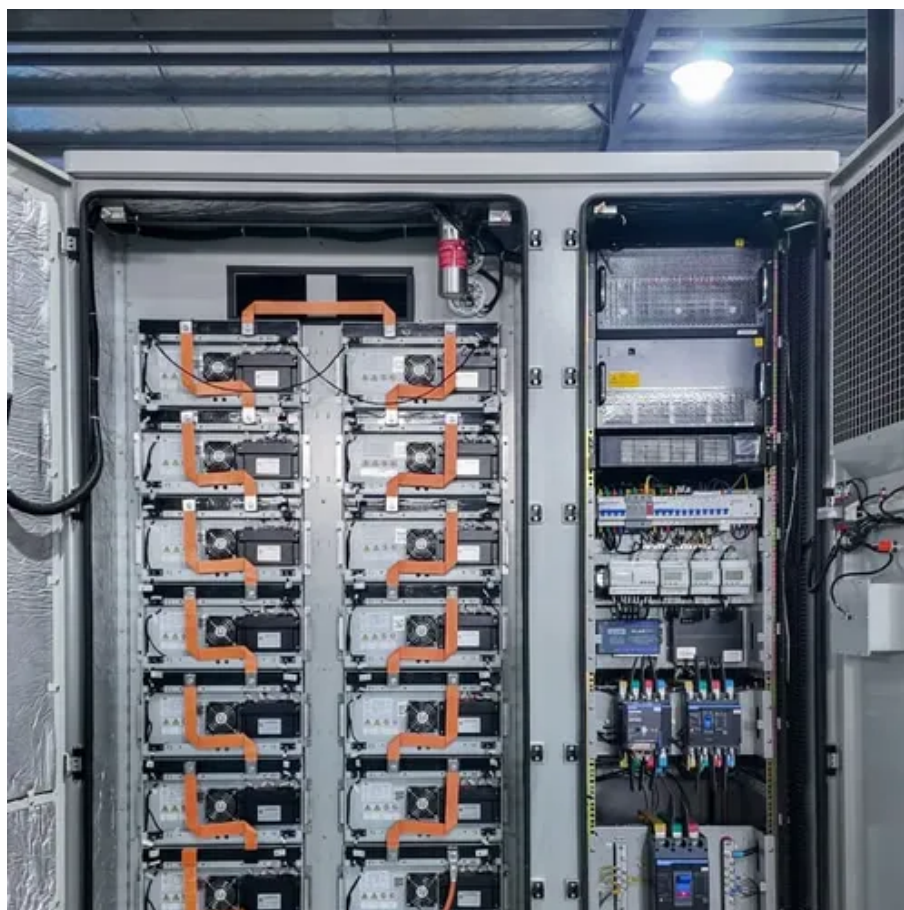




Connection method of photovoltaic combiner box





Connection method of photovoltaic combiner box



[How to Connect Solar Panels to a Combiner Box: A Step-by-Step Guide](#)

Connecting solar panels to a combiner box is a crucial step in setting up a solar power system. This process consolidates multiple strings of solar panels into a single output, simplifying the ...

[The Ultimate Guide to Solar Combiner Boxes: From Basics to ...](#)

Proper Wiring Connections: Connect each photovoltaic string to its respective terminal within the combiner box, ensuring correct polarity (positive to positive and negative to negative).



Step-by-Step Guide: Wiring Your PV Combiner Box

A PV combiner box is an essential component of a solar photovoltaic (PV) system, allowing multiple PV strings to be connected and combined into one output. The wiring diagram for a PV combiner box ...

How to Install a Solar Combiner Box - Step by Step

Install a solar combiner box by choosing the right location, mounting it securely, wiring solar strings and outputs correctly, ensuring safety, and testing before powering up.



How to Connect a PV Combiner Box? , Power Home

This blog begins with the structure of a PV combiner box, progressively explaining the wiring methods for PV arrays, the connection sequence of DC protection devices, and grounding ...

[How To Wire A Solar Combiner Box Or Pass-Through Box?](#)

In larger systems, where you have three or more strings running in parallel, you'd likely need a combiner box. The combiner box brings together all the individual wires from each string and combines them ...



Combiner Box Wiring Diagram: A Comprehensive Guide

To understand how a combiner box works, it is important to have a clear understanding of its wiring diagram. The combiner box wiring diagram illustrates the connection of various components within ...

Solar Combiner Box Installation and



Wiring Diagram

Learn how to safely install and wire a solar combiner box for DC PV systems. Step-by-step guide covers wiring, grounding, surge protection (SPD), and best practices for solar panel arrays.



How to install a combiner box properly?

Connect the Cables to the Combiner Box: Insert the stripped ends of the positive cables into the positive terminals of the combiner box and the stripped ends of the negative cables into the ...

[Wiring, connection and electrical safety standards of combiner boxes](#)

This article will explore the wiring and connection methods of combiner boxes and related electrical safety standards in detail to better understand how to design and install efficient and ...





Contact Us

For catalog requests, pricing, or partnerships, please visit:

<https://firmaskrzypek.pl>

Phone: +48 22 426 71 90

Email: info@firmaskrzypek.pl

Scan the QR code to access our WhatsApp.

