



# Comprehensive ems solution for solar telecom integrated cabinets





## Overview

---

The ESS solution is a highly integrated, all-in-one, C&I Hybrid energy storage cabinet with multiple application scenarios. It aims to optimize energy system performance to enhance renewable energy utilization, reduce energy costs, and. This advanced lithium iron phosphate (LiFePO<sub>4</sub>) battery pack offers a robust solution for various energy storage applications. The all-in-one air-cooled ESS cabinet integrates long-life battery, efficient balancing BMS, high-performance PCS, active safety system, smart distribution and HVAC into one. th their business needs. As Architects of Continuity™, Vertiv solves the most important challenges facing today's data centers, communication networks and commercial and industrial facilities with a portfolio of power, cooling and IT infrastructure solutions and services that extends from the. KDST specializes in delivering a full range of cabinet solutions for telecommunications, energy, and industrial automation sectors. It. Revolutionising Connectivity with Reliable Base Station. HighJoule's telecom battery systems are purpose-built. SOFAR Energy Storage Cabinet adopts a modular design and supports flexible expansion of AC and DC capacity; the maximum parallel power of 6 cabinets on the AC side covers 215kW-1290kW; the capacity of 3 battery cabinets can be added on the DC side, and the capacity expansion covers 2-8 hours.



## Comprehensive ems solution for solar telecom integrated cabinets



### [Outdoor Enclosures , NEMA-Rated Telecom Cabinets , IP55, IP65](#)

We offer a comprehensive range of outdoor enclosures for virtually any installation. Designed to NEMA Type 3R, NEMA Type 4 requirements, AZE's cabinets and enclosures protect equipment from harsh ...

### Integrated

Engineered for efficiency and flexibility, these cabinets are ideal for telecom base stations, smart energy networks, and industrial control sites, where both power and communication systems must operate ...



### [Solar Modules + Smart Monitoring for Telecom Cabinets: Key Roles of](#)

You gain significant advantages by integrating solar module technology with smart monitoring in telecom cabinets. Real-time power monitoring and fault alerts help you prevent ...

### NEMA Enclosures & Integrated Solutions

Whether for remote telecom stations, solar hybrid systems, or industrial automation units, we provide fully assembled cabinets with integrated power, cooling, and control systems for plug-and-play ...



## Station EMS

The HJ-EMS400 Station-level EMS System is an advanced energy management solution designed for the collaborative management of photovoltaic (PV), energy storage, and charging piles.



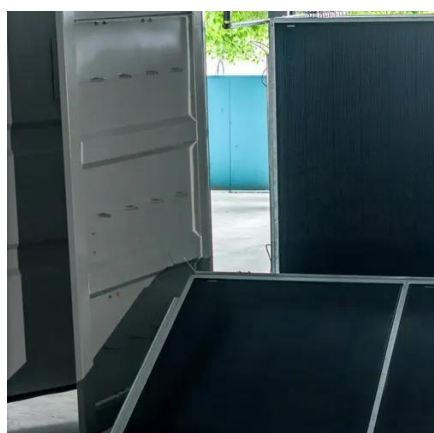
## [the solar telecom integrated cabinet ems is built in banpo](#)

An Outdoor Photovoltaic Energy Cabinet is a fully integrated, weatherproof power solution combining solar generation, lithium battery storage, inverter, and EMS in a single cabinet.



## For Telecom Applications

When evaluating a hybrid solar installation, you should look for a solution that offers the most comprehensive support options and a partner that can walk you through the design and testing as ...



## Energy Storage Cabinet\_SOFAR



Safety designs such as water and electricity separation, three-level fire protection + explosion venting + exhaust, liquid cooling + dehumidification design, all ensure the safety of the energy storage ...



## Solar Energy Solutions for Telecom

Delivers a total integrated energy management solution with remote monitoring . In this hyper-connected, technology dependent world, you can't afford for your critical network infrastructure to go ...

### [Solar Energy Lithium Battery and Inverter Storage Cabinet Solution](#)

The ESS solution is a highly integrated, all-in-one, C& I Hybrid energy storage cabinet with multiple application scenarios. It has outstanding advantages such as intelligent charge and discharge ...





## Contact Us

---

For catalog requests, pricing, or partnerships, please visit:

<https://firmaskrzypek.pl>

Phone: +48 22 426 71 90

Email: [info@firmaskrzypek.pl](mailto:info@firmaskrzypek.pl)

Scan the QR code to access our WhatsApp.

