



Communications installs 5g base station on the roof





Communications installs 5g base station on the roof



[Complete Guide to 5G Base Station Construction , Key Steps, ...](#)

Explore how 5G base stations are built--from site planning and cabinet installation to power systems and cooling solutions. Learn the essential components, technologies, and challenges ...

Case Report: Illness After 5G Antennas on Rooftop

In this case, report two previously healthy persons, a man aged 63 years and a woman aged 62 years, developed symptoms of the microwave syndrome after installation of a 5G base ...



[The Role of Rooftop Infrastructure for 5G , American Tower](#)

Rooftops make it possible for antennas on the 5G network to transmit 5G signals directly to users through a better line of sight in an urban area. In this way, people and devices on the ground ...

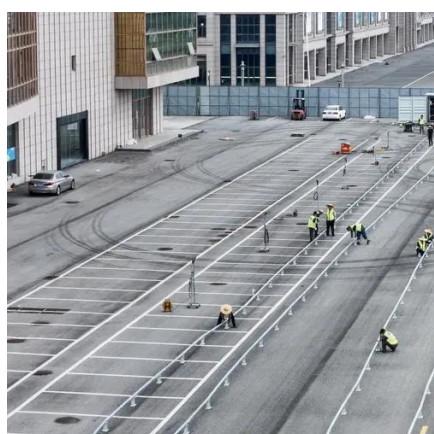
[Revealing 5G Cell Tower Health Impacts: 7 Scientific Case Studies](#)

In this case, report two previously healthy persons, a man aged 63 years and a woman aged 62 years, developed symptoms of the microwave syndrome after installation of a 5G base ...



[What Building Owners Need To Know About 5G Roof Technology](#)

Commercial property owners, rental property managers, real estate developers and even homeowners can contract for the installation of 5G transmitters on the roofs of their buildings for an ...



[Improving 5 G base station placement through precise rooftop](#)

By refining these detections, the placement of 5 G base stations is undertaken in a practical, industrial way, thus allowing network operators to perform a more real-world network ...



The Impact of 5G to Commercial Structures

The procedure involved with installing these 5G antennas to a parapet or exterior wall of the building is rather straight forward. The mounting equipment is bolted to the building and serves to ...



Sharing GNSS Antenna Solution for



5G Construction

It supports access to multiple RF antenna interfaces of ports of BBU base station. Mainstream configuration covers dual input (one in the master and one in the slave), 36-way outputs.

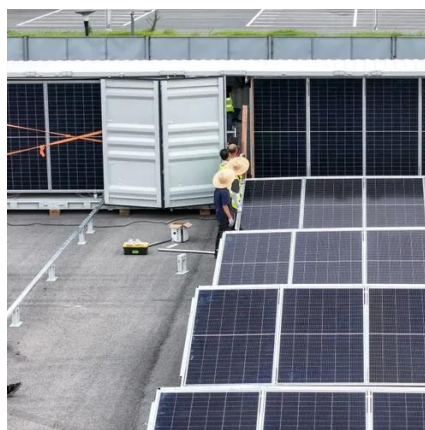


Rooftop Base Stations & Structure , Murphy Tower

Murphy Tower Service specializes in challenging rooftop installations of wireless communications infrastructure including base station shelters and custom support structures.

[Understanding Rooftop Telecom Towers: Types and Applications](#)

In 2025, the global telecom towers market reached USD 29.29 billion, with rooftop telecom towers powering 59% of urban 5G networks, transforming cityscapes into hubs of seamless ...





Contact Us

For catalog requests, pricing, or partnerships, please visit:

<https://firmaskrzypek.pl>

Phone: +48 22 426 71 90

Email: info@firmaskrzypek.pl

Scan the QR code to access our WhatsApp.

