



Communication Base Station EMS Environmental Assessment Record





Overview

The Environmental EME Report provides calculations of the maximum levels of radiofrequency (RF) electromagnetic energy (EME) around an existing and/or proposed wireless base station that may include mobile telephony, broadband and data services. The report is. This paper calculates SAR distributions in the brains of a 6-year-old child and an adult under an environment with spatially uniform incidences of plane waves. The results are expressed in $W/kg/(V/m)^2$ and would be used as an SAR efficiency at the corresponding age for cumulative exposure. Environmental Performance Assessment System (EPAS) is a program that provides Army commanders a comprehensive look at environmental risks associated with their facilities and missions. Army Environmental Command (USAEC) executes the EPAS program at all U. Army Installation Management. The MQTT protocol is chosen as the backbone protocol of the system architecture, and the wireless network is used to realize data communication between each other. The EMEG is produced from site data collated from multiple sources using ProX5 EME - Corearth's proprietary RF EME modelling software - to predict RF EME general public and occupational. The authors present a new approach integrating EMF minimization into the placement and optimization of base stations, thus aligning network development with public health guidelines. Bioelectromagnetics 31:613-621 (2010) A Numerical Coefficient for Evaluation of the Environmental Impact of.



Communication Base Station EMS Environmental Assessment Record

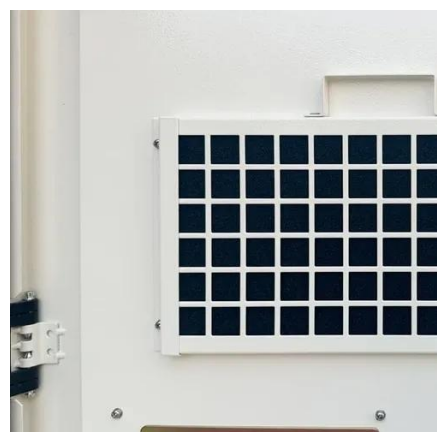


[Environmental Monitoring of Communication Base Station Based ...](#)

Based on ZigBee technology, a real-time monitoring system for the base station environment is designed in this paper, which enables the operation and maintenance personnel to remotely view the ...

[Human exposure to EMF from 5G base stations: analysis, evaluation ...](#)

Performance of three different methodologies and equipment (broadband probes, spectrum analyzers, and drive test scanners), in the context of human exposure to electromagnetic ...



[5G Mobile Communication Base Station Electromagnetic ...](#)

Based on the above background, in order to solve the contradiction between the rapid construction of communication BS and the management of EMR environmental impact assessment ...

[Environmental EMF Evaluation for Mobile Communication Base Stations](#)

Abstract: Environmental EMF assessment for epidemiological studies is important. It obviously differs from the measurements for compliance test with the safety limits. We live by moving ...

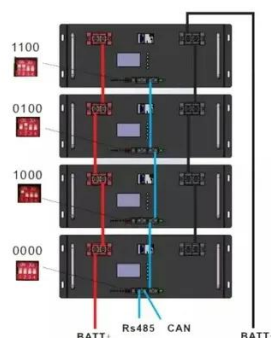


A Guide to the Environmental EME Report

The Environmental EME Report provides calculations of the maximum levels of radiofrequency (RF) electromagnetic energy (EME) around an existing and/or proposed wireless base station that may ...

[U.S. Army Environmental Command > Compliance > Environmental](#)

The EPAS program assesses both the Environmental Management System (EMS) and compliance aspects of a garrison's environmental program. A team performing a site visit normally consists of six



Mobile Base Station Site Compliance , Corearth

In order for a telecommunication site to be deemed compliant with ACMA's licence condition determination, Corearth offers the following RF EME assessment services.

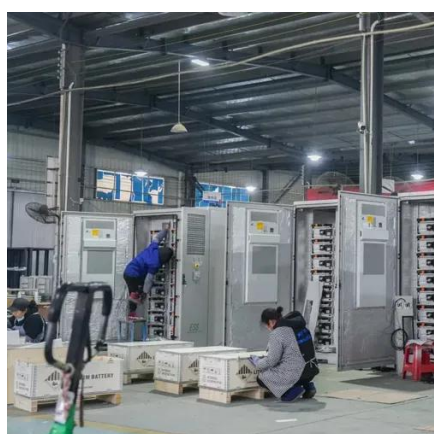


[Environmental EMF Evaluation for Mobile](#)



Communication Base ...

The purpose of the study is to determine a typical SAR distribution at a specific age and a specific frequency of environmental EMF radiated from base stations.



A numerical coefficient for evaluation of the environmental impact of

The paper addresses the environmental impact of electromagnetic fields (EMF) emitted by mobile communication base stations, amidst growing public concern regarding health risks. It critiques ...

Mr. Guo-qing LI Professor Senior Engineer China Academy of

This presentation describes the current national policies and technical requirements related to electromagnetic radiation management of mobile communication base stations in China, including ...





Contact Us

For catalog requests, pricing, or partnerships, please visit:

<https://firmaskrzypek.pl>

Phone: +48 22 426 71 90

Email: info@firmaskrzypek.pl

Scan the QR code to access our WhatsApp.

