



Circuit breaker in substation in Australia





Circuit breaker in substation in Australia



Substation Primary Design Standard

Substation side of line disconnectors for line entry bays below 330kV and greater than 40kA; Capacitor side of capacitor circuit breaker/current transformer; Reactor side of reactor circuit ...

Substation General Equipment Detail and Layout Standard

Substation Switchyard arrangements are designed taking into account system supply reliability and securing. TasNetworks utilising typical breaker and a half or double bus for switching ...



Circuit Breaker In Substation , Protection & Grid Control

A circuit breaker in substation systems interrupts fault current to protect transformers, busbars, and grid assets while supporting protection coordination, maintenance planning, and long ...

Substation Design Principles

The substation shall have a facility for local and remote control. Local control is to be provided at the circuit breaker for maintenance purposes, in the control room by the HMI or the emergency control ...



What is the role of circuit breakers in a substation?

Circuit breakers are essential components in a substation, performing critical functions such as protecting against overcurrents, isolating faulty sections, controlling electrical circuits, and ...



Substation Components--Part 3: Circuit Breakers

Substation Components--Part 3: Circuit Breakers
This article explores the crucial role of circuit breakers in substations, covering their fundamental functions, interruption processes, and the ...



Circuit Breakers

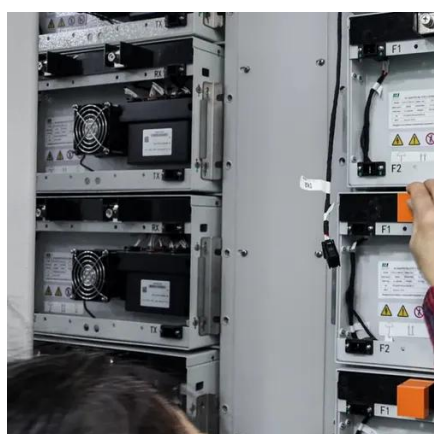
Identify critical assets: Determine which circuit breakers are essential for maintaining the integrity and reliability of the network. For example, a 66kV circuit breaker at a major zone substation ...



Reference Document (with Cover)



Abstract: The purpose of the standard is to assist with selection of circuit breakers for substation applications. Keywords: Substation, Circuit breaker, Gas Insulated Switchgear, ...



Managing the Risk of Circuit Breaker Failure 2024-2028

The identified need for this project is to continue to provide safe and reliable electricity transmission services in South Australia at a prudent and efficient cost. Specifically, the identified ...

Major Substations Building Design Standard

Substation buildings shall be designed with an Importance Level of 4, in accordance with the NCC and relevant Australian Standards. The substation wind and earthquake design shall be ...





Contact Us

For catalog requests, pricing, or partnerships, please visit:

<https://firmaskrzypek.pl>

Phone: +48 22 426 71 90

Email: info@firmaskrzypek.pl

Scan the QR code to access our WhatsApp.

