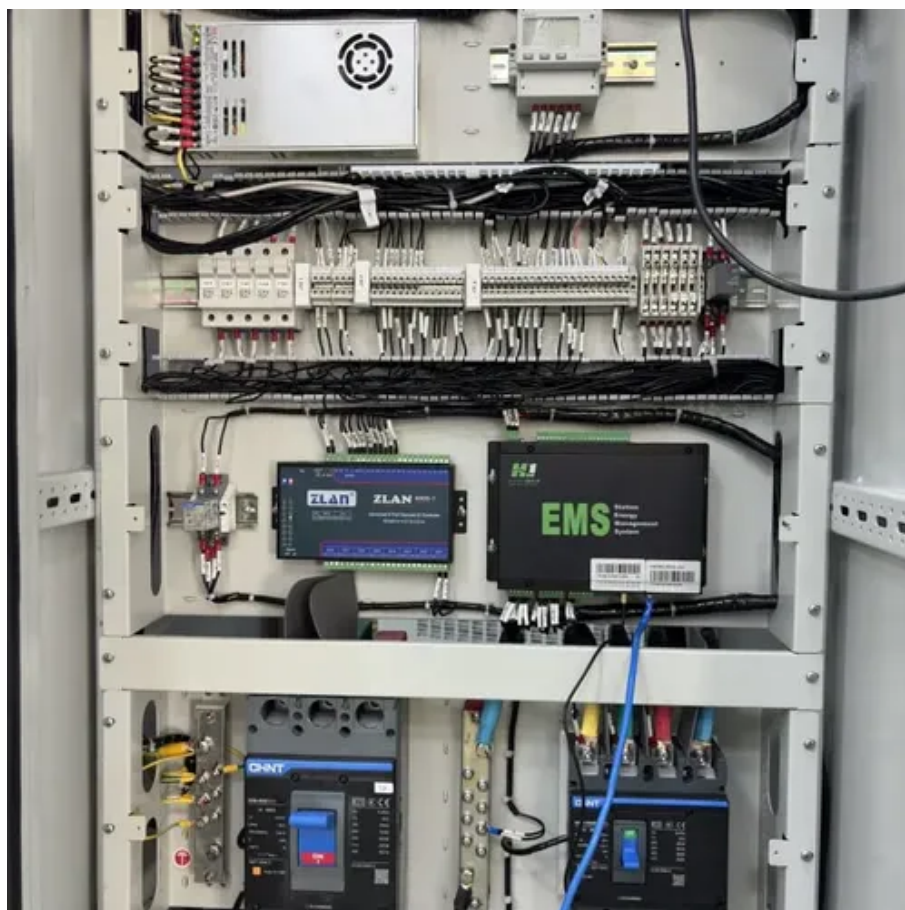




# Characteristics of closed system





## Characteristics of closed system

---



### 4.4: Summary

Features of closed systems can be defined by their properties: Closed systems are experimentally defined by an investigator. Defined standard conditions apply. Energy entering or leaving the system ...

### Closed System

A closed system is defined as one that does not have inputs from or losses to the outside, thus not interacting with its environment. An example of a closed system is an equilibrium reaction. ...



### Closed system (systems theory)

A Closed System is a system that exchanges virtually no energy, matter, or information with its surrounding environment. In systems analysis, the concept of a closed system is used to ...

### Closed & Open Systems , Definition, Differences

What are closed and open systems? Understand the properties of closed and open systems with examples. Learn the differences between open and closed systems.



## Closed System vs. Open System

In conclusion, closed systems and open systems represent two distinct types of systems with their own unique attributes and characteristics. Closed systems are isolated and do not interact with the ...



## Open System And Closed System

Open Systems vs. Closed Systems: A Deep Dive into System Dynamics Understanding the difference between open and closed systems is fundamental to comprehending numerous ...



## closed system physics

closed system physics closed system physics is a fundamental concept in the study of physical systems, emphasizing the behavior of systems isolated from external influences. ...



## What is a closed system in science?



In the scientific and engineering disciplines, the concept of a closed system provides a theoretical framework for analyzing and modeling physical phenomena. While perfectly closed ...

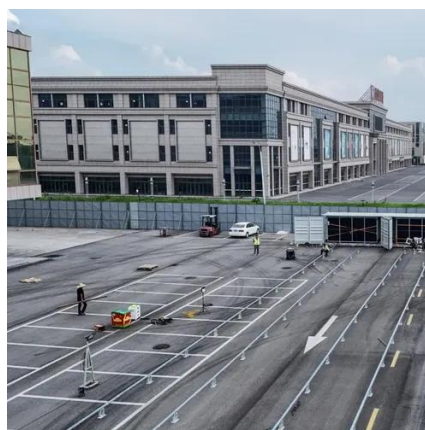


## What Is a Closed System?

Characteristics of a Closed System The key characteristic differentiating a closed system from other types of systems (open and isolated) lies in its interaction with its environment. No Matter ...

## Closed system , Description, Example & Application

The essential characteristics of a closed system include that it is self-contained, isolated from the surroundings, and has a fixed amount of matter. The system can exchange energy, such as ...





## Contact Us

---

For catalog requests, pricing, or partnerships, please visit:

<https://firmaskrzypek.pl>

Phone: +48 22 426 71 90

Email: [info@firmaskrzypek.pl](mailto:info@firmaskrzypek.pl)

Scan the QR code to access our WhatsApp.

