



# Can xiaomi solar outdoor power cabinet withstand low temperature





## Overview

---

Superior thermal stability with an operating temperature range typically from -20°C to 60°C (-4°F to 140°F) High tolerance to deep discharge cycles without capacity loss Excellent chemical and mechanical stability reducing risks of overheating or thermal runaway. Superior thermal stability with an operating temperature range typically from -20°C to 60°C (-4°F to 140°F) High tolerance to deep discharge cycles without capacity loss Excellent chemical and mechanical stability reducing risks of overheating or thermal runaway. Portable power stations are invaluable for outdoor activities, emergency preparedness, and off-grid power. However, when temperatures drop, their performance and safety can be compromised. Understanding how to safely operate, charge, and store these devices in winter conditions ensures reliability. Choosing the right solar module for telecom cabinets relies on understanding how temperature affects performance. It seems almost all LiFePO4 batteries are only rated to -20 storage. So now I'm not sure what to do. In this article, we explore what makes certain batteries better suited for extreme weather conditions and how innovative companies like.



## Can xiaomi solar outdoor power cabinet withstand low temperature

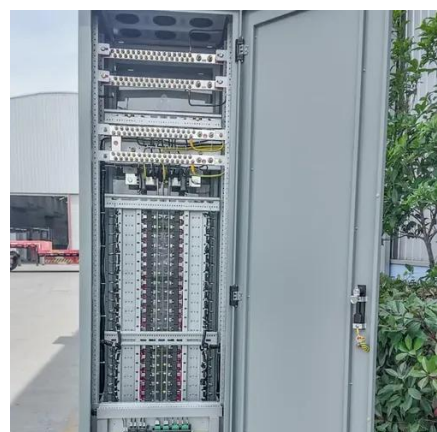
### [How to Use Xiaomi Smart Outdoor Power Supply: A Complete Guide ...](#)



Summary: Discover how to maximize your Xiaomi smart outdoor power supply for camping, RV trips, and emergency backup. Learn setup tips, safety precautions, and real-world applications through ...

### [Solar Module Power Matching for Telecom Cabinets in High/Low ...](#)

Choosing the right solar module for telecom cabinets relies on understanding how temperature affects performance. Recent studies show that higher module temperatures decrease ...



### [Batteries for Solar Storage in Extreme Weather Conditions: What ...](#)

Selecting batteries for solar storage that perform reliably in extreme weather is critical for maintaining energy independence and protecting your investment. Lithium Iron Phosphate (LiFePO4) ...

## Thermal Management of Outdoor Enclosures, Part 1

Most enclosures will be installed in a variety of outdoor conditions. Typically, external (ambient) temperature range is from  $-30^{\circ}\text{C}$  to  $55^{\circ}\text{C}$  in all latitudes and longitudes. Equipment ...



### [Best Solar Generator For Cold Weather \[Updated: January 2026\]](#)

They maintain efficiency and provide reliable power output even at low temperatures. According to a study by the National Renewable Energy Laboratory (NREL) in 2021, lithium-ion ...



### [15 Best Portable Power Stations That Operate Reliably in Low ...](#)

Its stable power output and eco-friendly solar compatibility make it versatile and dependable, even in low-temperature environments. Best For: outdoor enthusiasts and travelers ...



### [Cold Weather and Lithium Batteries: Challenges and Solutions](#)

Cold weather can significantly impact the performance and lifespan of lithium batteries, but with the right precautions, you can mitigate these effects and ensure your home energy storage ...



### [Solar LiFePO4 Batteries in Cold Climates:](#)



## How Do They Perform?

They can withstand extreme temperatures without compromising their functionality. This makes them ideal for regions that experience harsh winters or consistently low temperatures.

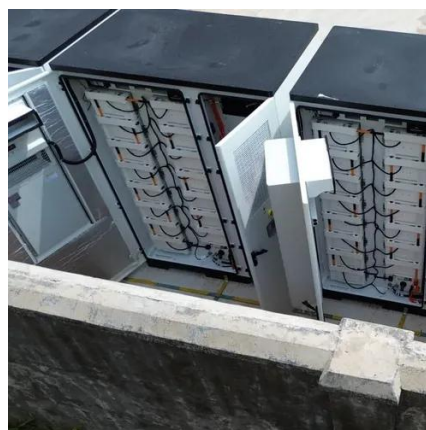


## **LiFePO4 battery storage in extreme cold climate**

Temperatures where the cabin are will often go below that and will go down as low as -40 for brief periods. It seems almost all LiFePO4 batteries are only rated to -20 storage.

## Safety Precautions For Portable Power Station In Cold Weather

According to the U.S. Department of Energy, cold temperatures can reduce lithium-based battery capacity by up to 30% due to slower chemical reactions inside the cells. With proper ...





## Contact Us

---

For catalog requests, pricing, or partnerships, please visit:

<https://firmaskrzypek.pl>

Phone: +48 22 426 71 90

Email: [info@firmaskrzypek.pl](mailto:info@firmaskrzypek.pl)

Scan the QR code to access our WhatsApp.

