



# Can wind turbines generate electricity with low wind speed





## Overview

---

Wind turbines are designed to harness wind energy and convert it into electricity, yet they do not generate power when wind speeds drop below a certain threshold known as the 'cut-in-speed'. When the wind is below cut-in, the turbine remains idle. As wind speed increases, power output escalates until the rated wind speed is achieved and the turbine produces maximum. Wind energy has been a cornerstone of renewable energy strategies worldwide, praised for its ability to generate electricity without emitting greenhouse gases. However, there's an ongoing debate about the effectiveness of wind turbines in areas with low wind speeds. Leveraging proven technical concepts from its Delta4000 series, the N169/5. At lower wind speeds typical of many inland sites in South East Asia the commercially available wind power systems do not produce a significant amount of power.



## Can wind turbines generate electricity with low wind speed



### Wind turbine concepts for domestic wind power generation at low wind

It was concluded that while Zephyr wind turbine has a low maximum power coefficient compared to other turbine systems, it performs well in low quality wind conditions with low wind ...

## Wind Energy Factsheet

Wind could provide 20% of U.S. electricity by 2030 and 35% by 2050. 11 Five of the eight Great Lakes states have offshore wind energy potentials that exceed their annual electricity demand (MI, WI, NY, ...



## Does Wind Turbine Still Work Under Low Winds?

Wind turbines are designed to harness wind energy and convert it into electricity, yet they do not generate power when wind speeds drop below a certain threshold known as the 'cut-in ...

### Wind speed reductions by large-scale wind turbine deployments lower

Wind turbines generate electricity by removing kinetic energy from the atmosphere. Large numbers of wind turbines are likely to reduce wind speeds, which lowers estimates of electricity ...



### FLEXIBLE SETTING OF MULTIPLE WORKING MODES

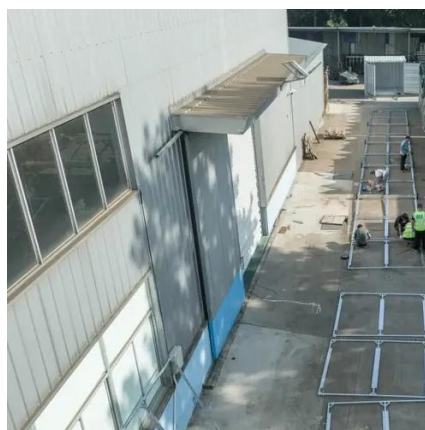


### What is the minimum speed for a wind turbine? , REVE News of the ...

Q: Can wind turbines generate electricity at low wind speeds? A: Yes, wind turbines can generate electricity at low wind speeds, but the amount of power produced is significantly lower ...

### Optimal wind speeds for turbine efficiency . Business ...

Discover wind speed for wind turbine efficiency, from cut-in to cut-out speeds, and how low wind speed turbines boost output in challenging conditions.



### Wind turbines for very low winds, the future of wind energy?

During periods of low wind, the low-wind turbines will generate power, and during high-wind periods, the conventional ones will operate, but not simultaneously.



## Low Speed Wind Turbine Design



With careful design of the turbine and generator, power production greatly in excess of commercial turbines is possible at lower wind speeds. This will allow the use of wind power in applications in ...



## Low-Wind Turbines Generate Big Energy

Leveraging proven technical concepts from its Delta4000 series, the N169/5.X turbine features a larger rotor diameter of 169 meters (554 feet) and a power rating of up to 5.5 MW, ...

## Can Wind Turbines Work Effectively in Low-Wind Regions?

In conclusion, wind turbines can indeed work effectively in low-wind regions, provided there is strategic planning and the use of advanced technologies. While these areas pose unique ...





## Contact Us

---

For catalog requests, pricing, or partnerships, please visit:

<https://firmaskrzypek.pl>

Phone: +48 22 426 71 90

Email: [info@firmaskrzypek.pl](mailto:info@firmaskrzypek.pl)

Scan the QR code to access our WhatsApp.

