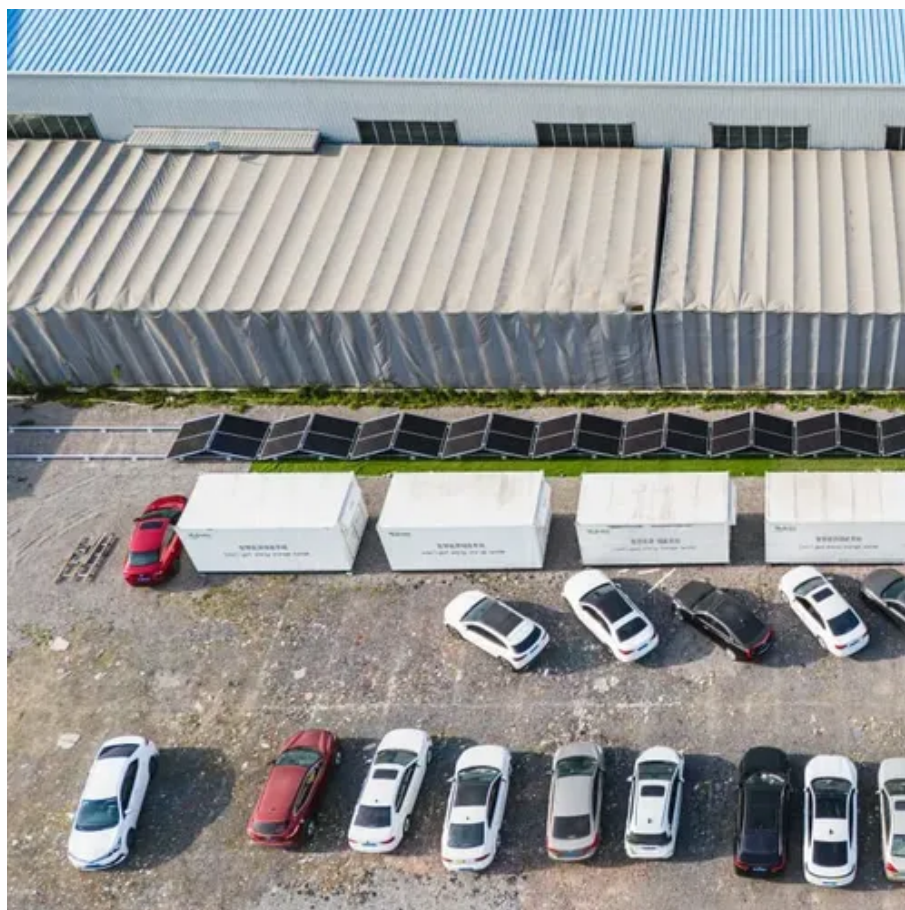




Can solar panels be connected to two inverters





Can solar panels be connected to two inverters



More Than One Solar Inverter (Multiple Choice)

Separate solar arrays must be connected to a single inverter or charge controller to ensure that the maximum amount of incident solar energy is converted to output power.

More Than One Solar Inverter (Multiple Choice)

Connecting two inverters in parallel is a straightforward process ...



[How Many Inverters Do You Need for Your Solar System?](#)

In this article we'll dive deep into the world of inverter sizing, explore how many panels you can connect to one inverter, why the design matters, and how the choice of a solar inverter ...

How To Connect Two Inverters In Parallel

Connecting two inverters in parallel is a straightforward process that allows you to increase the power output of your system without the need for a more powerful single inverter. This method is ...



How to Run 2 Inverters from One Solar Array?

To run two inverters from one solar array, you need to make sure the inverters and the solar panels' output are compatible, then either connect the inverters in parallel for more capacity ...



[How Many Solar Panels Can I Connect to an Inverter?](#)

To get the best performance from your solar system, you need to match your solar panel wattage with your inverter's capacity. Here's an easy, step-by-step guide to finding the ideal number ...



[How Many Solar Panels Can I Connect to an Inverter? A Complete ...](#)

This guide will discuss the factors that determine how many solar panels can be connected to an inverter, such as inverter specifications, wiring configurations, and the use of charge controllers.



[How to Connect Two Inverters in Parallel:](#)



A Comprehensive Guide

Connecting two inverters in parallel can significantly increase your power output, making it a popular choice for solar energy systems and backup power solutions. This method allows multiple ...



Can You Use 2 Inverters Together?

You can connect two inverters with similar features to each other. This will increase the output and allow you to store more energy generated from your solar panel system.

Myth vs reality: can two inverters make true split-phase?

When designing a solar energy system, a common question arises: can you achieve this by simply connecting two inverters? The answer is more complex than a simple yes or no.



Can I use multiple solar inverters in a single solar power system?

For example, south - facing panels can be grouped together and connected to one set of inverters, while east - or west - facing panels can be connected to another set.



Contact Us

For catalog requests, pricing, or partnerships, please visit:

<https://firmaskrzypek.pl>

Phone: +48 22 426 71 90

Email: info@firmaskrzypek.pl

Scan the QR code to access our WhatsApp.

