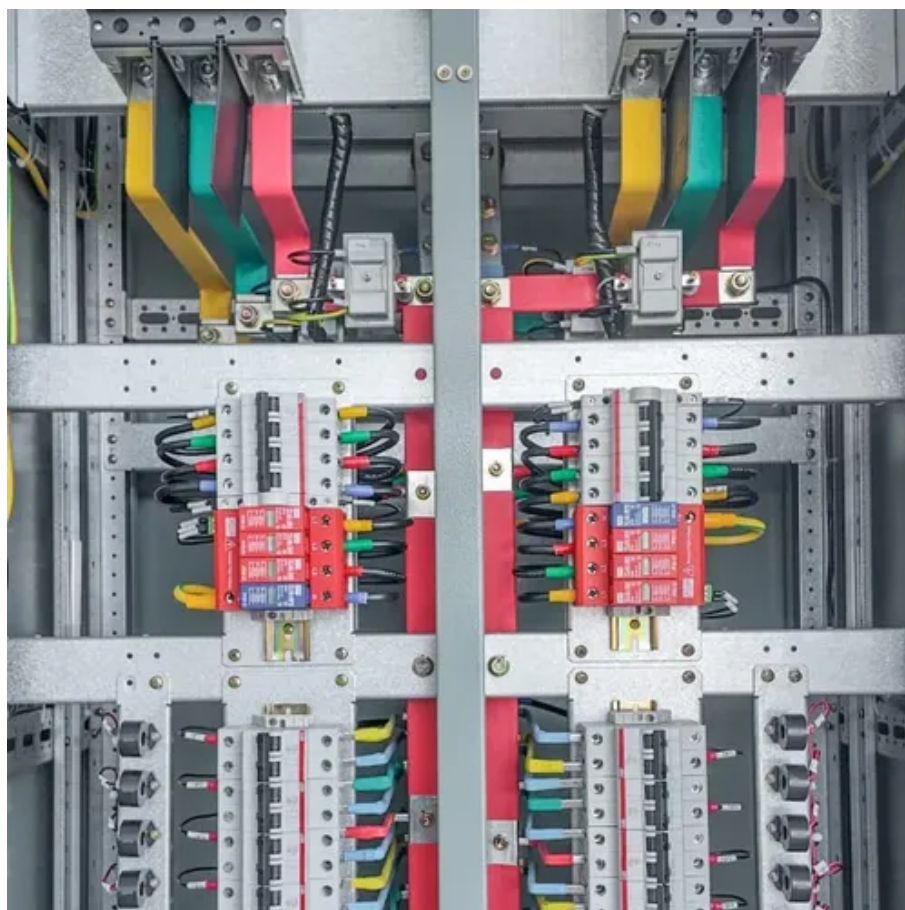




# Can a 36v 10ah lithium battery be connected to an inverter





## Can a 36v 10ah lithium battery be connected to an inverter



### [Compatibility of Lithium-Ion Batteries with Existing Inverters](#)

For homeowners and renewable energy enthusiasts, the question remains--can you install a lithium-ion battery with your existing inverter? Understanding this compatibility is crucial for anyone looking to ...

### [Compatibility of Lithium-Ion Batteries with Existing ...](#)

For homeowners and renewable energy enthusiasts, the ...



### **Can You Mix Different Capacity Lithium Batteries?**

A comprehensive guide to mixing different capacity lithium batteries. Dive into the crucial aspects of voltage, BMS, fuses, and more.

### [Hybrid Inverter and Lithium Batteries: Setup Guide and Best Practices](#)

By following the steps outlined in this guide, you can ensure that your energy storage system operates efficiently and reliably. Proper communication not only extends the life of your lithium batteries but ...



### Can Lithium Batteries Work With Any Type of Inverter?

The short answer is no - proper inverter matching is crucial for optimal performance and safety. Let's examine the key compatibility factors for lithium battery and LiFePO4 battery systems.

### How Many Batteries can Be Connected To An Inverter?

The charging current determines how many batteries you can use with an inverter. The battery capacity cannot exceed the charging current limits, otherwise the battery will take too long to charge or not all.



### Can a 36v 10ah lithium battery be connected to an inverter

Yes, you can connect an inverter to a lithium battery. Lithium batteries, particularly Lithium Iron Phosphate (LiFePO4) batteries, are well-suited for use with inverters due to their high efficiency, ...

## **Can I Connect Inverter to Lithium**



## Battery?

Yes, you can connect an inverter to a lithium battery. Lithium batteries, particularly Lithium Iron Phosphate (LiFePO4) batteries, are well-suited for use with inverters due to their high ...



### [How to Connect a Lithium Battery to an Inverter: ...](#)

Learn how to connect a lithium battery to an inverter safely and efficiently with step-by-step guidance, and safety precautions for stable power use.

### [Calculate Battery Size For Any Size Inverter \(Using Our Calculator\)](#)

You would need around 24v 150Ah Lithium or 24v 300Ah Lead-acid Battery to run a 3000-watt inverter for 1 hour at its full capacity. Here's a battery size chart for any size inverter with 1 hour ...



### [How to Connect Lithium Batteries to Inverter in 2 Minutes , Safe](#)

In just 2 minutes, learn the correct method to connect lithium batteries to any inverter.



## Contact Us

---

For catalog requests, pricing, or partnerships, please visit:

<https://firmaskrzypek.pl>

Phone: +48 22 426 71 90

Email: [info@firmaskrzypek.pl](mailto:info@firmaskrzypek.pl)

Scan the QR code to access our WhatsApp.

