



Build base stations and engage in communications



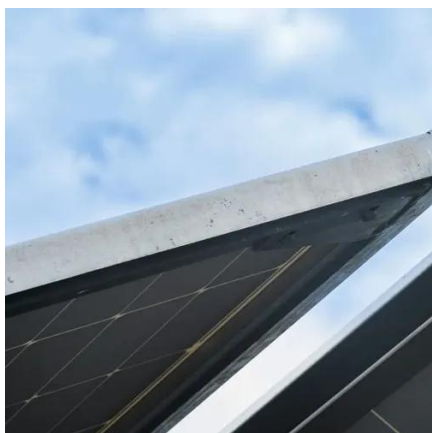


Overview

A base station connects your phone to the network. They provide the coverage you need for calls and data. The cabinet houses critical components like main base station equipment, transmission equipment, power supply systems, and battery banks. Meanwhile, the pole serves as a mounting point for antennas, Remote Radio Units (RRUs), and. The present-day tele-space is incomplete without the base stations as these constitute an important part of the modern-day scheme of wireless communications. Understanding how these stations function is essential for anyone engaged in the field of telecommunications or simply interested in the mechanics. Turns out, there's an open source suite called srsRAN that lets you use an SDR for setting up an LTE network, and recently, we've found a blog post from [MaFrance351] (Google Translate) that teaches you everything you could need to know if you ever wanted to launch a LTE network for your personal. With the rise in data traffic and continuous innovations in wireless technology, base station design has become a cornerstone in ensuring that networks are efficient, reliable, and scalable.



Build base stations and engage in communications



[Base Stations and Cell Towers: The Pillars of Mobile Connectivity](#)

Base stations and cell towers are foundational to the functionality and expansion of cellular networks. They enable the connectivity that powers our mobile communications and are ...

Mobile Communication Base Stations

Mobile communication base stations, as the "nerve endings" of telecommunications networks, undertake core functions such as signal coverage and data transmission.



Base Stations

Base stations form a key part of modern wireless communication networks because they offer some crucial advantages, such as wide coverage, continuous communications and an array of ...

What are Base Station in Telecommunications?

Base stations contain several key parts. The antenna sends and receives radio energy. The transceiver handles signal modulation. The baseband processor converts signals to digital form. ...



[Base Station Design for Wireless Communications Engineers](#)

The journey towards a smarter, more efficient network starts with innovative base station design today. This comprehensive guide underscores the evolving role of wireless communications engineers in ...



[Understanding Base Stations in Mobile Communication](#)

By facilitating effective communication, base stations ensure users have consistent and high-quality service. They execute several key functions that support mobile connectivity and enhance user ...



Building Your Own 4G LTE Base Station

For a start, you want a reasonably powerful computer, a transmit-capable full-duplex software defined radio (SDR), suitable antennas, some programmable SIM cards, and a few other ...

[Understanding Base Stations: The](#)



[Backbone of Wireless ...](#)

Base stations are the critical components that enable mobile phones and other devices to connect to cellular networks. Here's how they work in a typical mobile network: Signal Transmission ...



ICNIRP , Base Stations

Over large distances, the signals must be relayed by a communication network comprising base stations and often supported by a wired network. The power of a base station varies (typically between 10 ...

[Complete Guide to 5G Base Station Construction , Key Steps, ...](#)

Explore how 5G base stations are built--from site planning and cabinet installation to power systems and cooling solutions. Learn the essential components, technologies, and challenges ...





Contact Us

For catalog requests, pricing, or partnerships, please visit:

<https://firmaskrzypek.pl>

Phone: +48 22 426 71 90

Email: info@firmaskrzypek.pl

Scan the QR code to access our WhatsApp.

