



Big inverter with small battery





Overview

Discover the top small inverters designed to work seamlessly with batteries, delivering portable power for your outdoor adventures, emergencies, and everyday needs. These inverters convert DC battery power to AC, featuring multiple charging ports for versatile devices. The BELTTT 2000W Pure Sine Wave Inverter impressed me with its robust 2000W continuous power and peak of 4000W, making it perfect for serious off-grid power. Its pure sine wave output ensures your devices run smoothly and are protected from surges, which is a huge plus for delicate electronics. Get free shipping on qualified Compact Battery Inverters products or Buy Online Pick Up in Store today in the Outdoors Department. It can also power an electric fan while you're working on your computer. What will a 500W inverter run?

A 500W inverter will. Match the inverter's continuous wattage rating to the battery's discharge capacity. (4kWh), a 2000W inverter is ideal. Formula: $\text{Inverter Wattage} \leq (\text{Battery Voltage} \times \text{Ah Rating} \times 0.8)$. Factor in surge power needs but prioritize sustained loads. Always check the battery's. But one of the most common questions in 2025 remains: How do you size and pair a battery with your inverter?

In this advanced guide, we'll expand on our earlier article, [How to Choose the Right Solar Inverter for Your Home](#), by focusing specifically on battery integration.



Big inverter with small battery



[Best Small Inverters With Battery Compatibility for Portable Power](#)

Discover the top small inverters designed to work seamlessly with batteries, delivering portable power for your outdoor adventures, emergencies, and everyday needs. These inverters ...

[Best Sized Inverter For 12 Volt Battery \[Updated On: February 2026\]](#)

After hands-on testing and side-by-side comparison, I confidently recommend the BELTTT 2000W Pure Sine Wave Inverter as your best-sized inverter for a 12-volt battery--perfect when ...



[What Size Inverter Do You Need? A Complete Guide for Home, RV](#)

Choosing the right inverter size is crucial--too small, and your appliances won't work; too large, and you'll waste money. This guide will help you determine the ideal inverter size for your ...

What Size Inverter Do I Need?

But whether you need a big inverter or a small inverter, you can figure out the appropriate size by taking a look through our inverter size calculator. First, how much power does a power inverter use? An ...



Can an Inverter Be Too Big for Your Battery System?

When sizing for 24V or 48V systems, recalculate using the higher voltage. A 48V 100Ah lithium battery (4.8kWh) paired with a 5000W inverter works because $48V \times 100Ah \times 1C = 4800W$. Always account ...



Best Solar Inverters With Battery Storage for Reliable Off-Grid Power

Below is a comparison table summarizing the featured products, followed by detailed reviews to help you choose the best solar inverter with battery storage for your energy needs. Check ...



COMPACT BATTERY INVERTERS

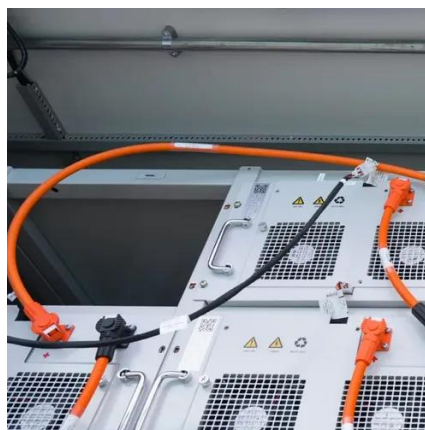
Get free shipping on qualified Compact Battery Inverters products or Buy Online Pick Up in Store today in the Outdoors Department.

The Only Inverter Size Chart You'll



Ever Need

We have created a comprehensive inverter size chart to help you select the correct inverter to power your appliances.



[What Size Inverter Do You Need for Your Home? , Renogy US](#)

If you live in a small apartment, a 250 VA inverter coupled with a 100 Ah battery will be a perfect choice to power all basic appliances, including television, lights, and fans.

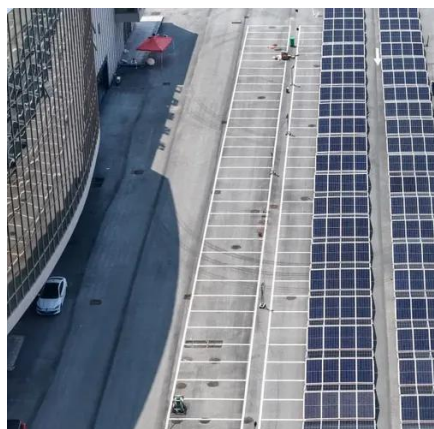
The Only Inverter Size Chart You'll Ever Need

How to Determine What Size Inverter I Need? What Are The Two Types of Power loads? Inverter Size Chart What Will A 300W Inverter Run? What Will A 500W Inverter Run? What Will A 700W Inverter Run? What Will A 1000W Inverter Run? What Will A 1500W Inverter Run? What Will A 2000W Inverter Run? What Will A 3000W Inverter Run? Appliances this inverter can run A 1000W inverter works great in combination with lithium batteries (up to 1kWh). It will run multiple basic appliances simultaneously, such as a refrigerator, TV, projector, video games, printer, and small stereo equipment. See more on climatebiz heated battery



Can an Inverter Be Too Big for Your Battery System?

When sizing for 24V or 48V systems, recalculate using the higher voltage. A 48V 100Ah lithium battery (4.8kWh) paired with a 5000W inverter works because $48V \times 100Ah \times 1C = 4800W$. Always account ...



[Battery and Inverter Sizing Guide 2025: How to Match Solar Storage](#)

Learn how to size and pair a battery with your solar inverter in 2025. Discover key ratios, examples, and Growatt solutions for optimal solar + storage system design.



Contact Us

For catalog requests, pricing, or partnerships, please visit:

<https://firmaskrzypek.pl>

Phone: +48 22 426 71 90

Email: info@firmaskrzypek.pl

Scan the QR code to access our WhatsApp.

