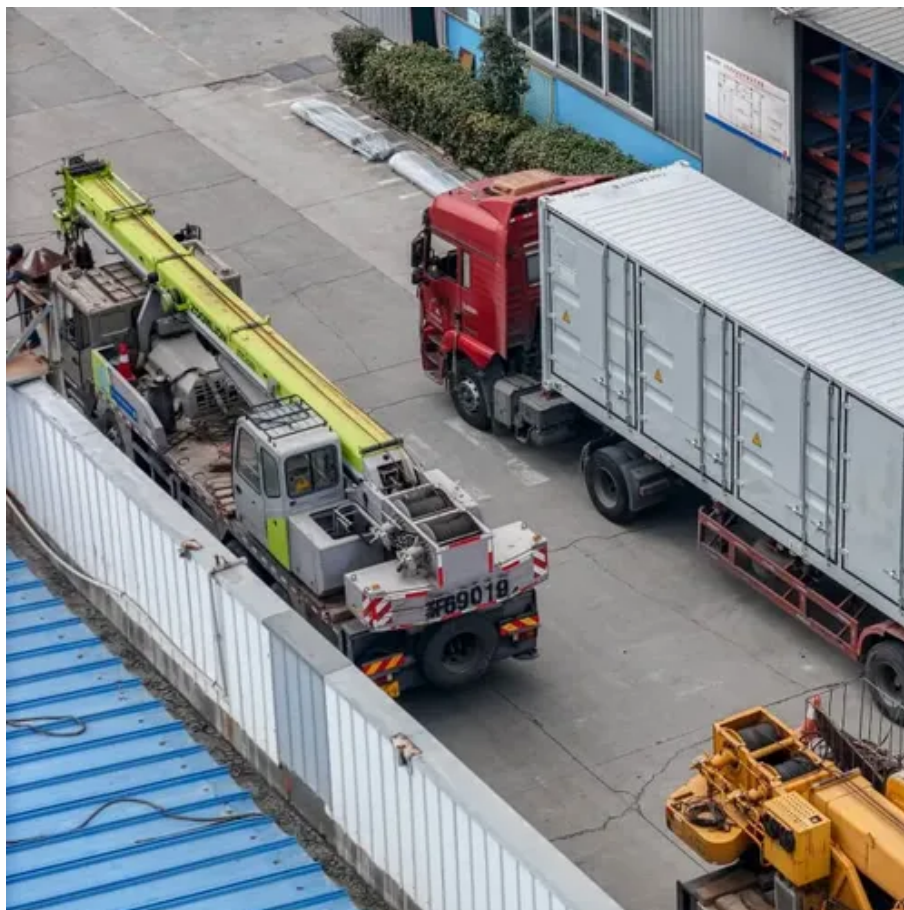




Bbu base station power module





Bbu base station power module

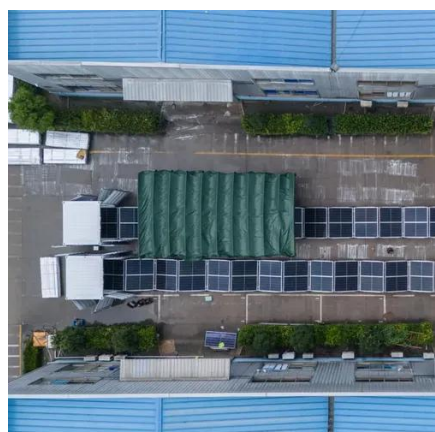


[HW BBU5900 Telecom Power Supply for 4G/GSM/3G Networks 5G DBS BBU Base](#)

Product descriptions from the supplier Hebei Qiangrenfa Communication Equipment Co., Ltd. is one of the largest base station equipment suppliers in North China. Our main products include 3G-5G base ...

[HUAWEI_GSM_R_BTS3900_Hardware_Structure.pdf](#)

The document describes the hardware structure of the Huawei BTS3900, an indoor macro base transceiver station. It discusses the main components of the BTS3900 including the baseband unit ...



[Baseband Unit \(BBU\)](#)

Learn about STMicroelectronics' baseband unit solutions for telecom infrastructure, providing efficient and reliable connectivity.

[Baseband unit \(BBU\) design resources , TI](#)

Our integrated circuits and reference designs help you create baseband units (BBUs) with signal integrity and low power while designing to 5G standards. Use the interactive system diagram below ...

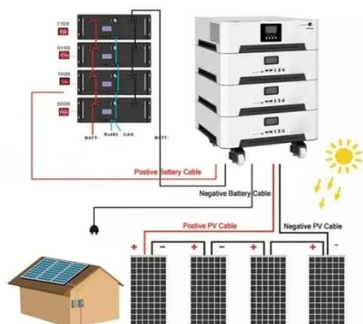


Baseband unit (BBU) DU / CU , Base Stations

A base station comprises a baseband unit (BBU) and a remote radio unit (RRU), and Murata's lineup of products for use in the distribution unit (DU) and central unit (CU) of baseband units is introduced here.

BBU5900 Hardware Description , PDF

Provides CPRI ports for communication with RF modules.



ORV3 BBU Module Reference Design (Rev 0.5)

Christian Cruz - Senior Product Applications Engineer - Analog Devices
Agenda (as applicable)
BBU Module Hardware Diagram
Cell Health Monitoring
Telemetry Data Collection
Display Call to Action
Juan Brizo - Test Engineering Manager - Analog Devices
Vermont Sanchez - Equipment Development Engineer - Analog Devices
Regina Gavino - Senior PCB Layout Engineer - Analog Devices
Fengrui Zuo - Systems Applications Engineer - Analog Devices
See more on 146a55aca6f00848c565-a7635525d40ac1c703



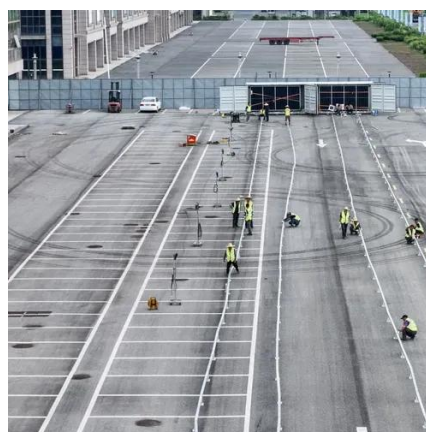
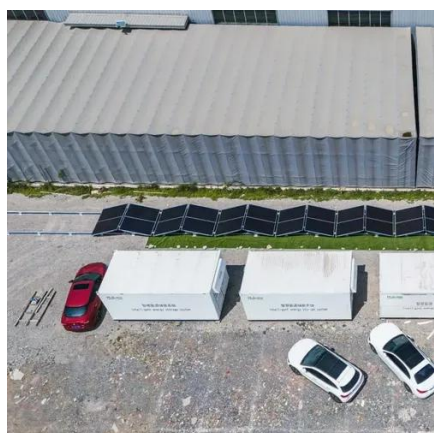
00198708936b4e.ssl.cf1.rackcdn Missing: base stationMust include: base stationmurata Translate this result

Baseband unit (BBU) DU / CU , Base Stations - Murata ...

A base station comprises a baseband unit (BBU) and a remote radio unit (RRU), and Murata's lineup of products for use in the distribution unit (DU) and central unit (CU) of baseband units ...

ORV3 BBU Module Reference Design (Rev 0.5)

BBU module - compliant with specification 78.1mm x 87.6mm x 674mm (W x H x L). Thank you!



[ADI OCP ORV3 BBU Reference Design \[Analog Devices Wiki\]](#)

Designed for deployment on a BBU Shelf within a data center rack, a Battery Back-up Unit (BBU) serves the purpose of supplying DC power to system loads in the event of sudden power interruptions.

DBS5900 Product Description

The basic modules are the baseband unit (BBU), Remote radio unit (RRU). The BBU uses common public radio interfaces (CPRIs) and electrical or optical cables to communicate with the RRUs.





[BBU5900 Hardware datasheet](#) [BTS5900](#)
[DBS3900](#) [BBU5900A](#) [UMPT ...](#)

Nominal Capacity
280Ah
Nominal Energy
50kW/100kWh
IP Grade
IP54



Focus on High-end telecom products including IP Data, Transmission, Wireless, Server & Storage and spare part. All items are fully tested with working conditions by engineer. Before returning goods, ...



Contact Us

For catalog requests, pricing, or partnerships, please visit:

<https://firmaskrzypek.pl>

Phone: +48 22 426 71 90

Email: info@firmaskrzypek.pl

Scan the QR code to access our WhatsApp.

