



Battery of communication base station is charged



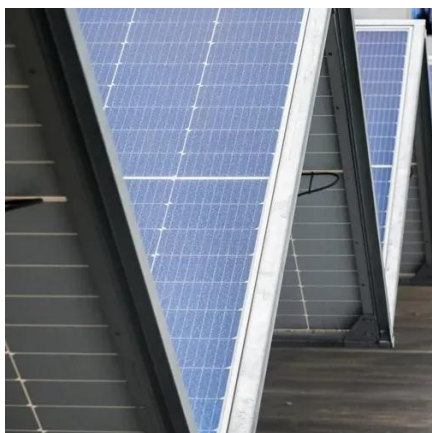


Overview

Charging the Battery: The BMS directs energy into lithium-ion cells, carefully managing charge rates to maximize lifespan and safety. The unique operational conditions of telecom base stations require batteries with characteristics distinct from general-purpose or consumer-grade products. Lithium-ion cells are the primary energy storage units, chosen for their high energy density, long. Before delving into the suitability of 12V 30Ah LiFePO4 batteries for communication base stations, it is essential to understand their technical specifications. This means that under ideal conditions. Telecommunication battery (telecom battery), also known as telecom backup battery or telecom battery bank, primarily refer to the backup power systems used in base stations and are a core component of these systems. However, their applications extend far beyond this. " These systems help stabilize Iraq's grid while supporting its 10GW renewable energy target by 2030. 45V output meets RRU equipment.



Battery of communication base station is charged



[Battery configuration for communication base station](#)

The communication base station backup power supply has a huge demand for energy storage batteries, which is in line with the characteristics of large-scale use of the battery by the ladder, and

[How to charge the battery of a communication base station](#)

Abstract: The battery is the main means of power storage in the power supply system of the communication base station. This article focuses on the engineering application of the battery



[Can a 12V 30Ah LiFePO4 battery be used in a communication base station](#)

LiFePO4 batteries can be charged at a much faster rate than lead - acid batteries. This is particularly important in communication base stations, where a quick recharge is often required after a power ...



Telecommunication Battery

Charge and Discharge Rate: Lithium-ion batteries charge 10 times faster than lead-acid batteries, allowing them to be fully charged during low-cost periods and discharged during peak ...



[How Communication Base Station Energy Storage Lithium Battery ...](#)

Charging the Battery: The BMS directs energy into lithium-ion cells, carefully managing charge rates to maximize lifespan and safety. During this phase, the system monitors voltage, current,



[Battery Charging Requirements for Communication Base ...](#)

When designing a UPS battery system for a telecom base station, engineers must address several critical factors to ensure reliability, efficiency, and longevity.



BATTERY CHARGING POWER CALCULATION FOR ...

The battery temperature can be received by an external sensor (like Smart Battery Sense or BMV), or measured by the charger when this feature is available. [pdf]



[Communication Batteries: Why Telecom](#)



Base Stations Have Unique ...

In modern telecom networks, ensuring uninterrupted connectivity is critical. The term "communication batteries" is often used ambiguously online, leading to confusion among operators, ...

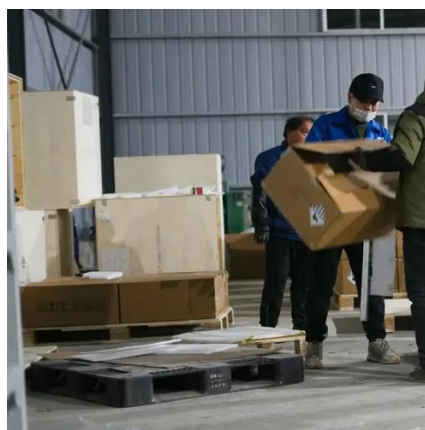


Can the communication base station battery be charged

Abstract: Battery is a basic way of power supply for communications base stations. Focused on the engineering applications of batteries in the communication stations, this paper introduces

Communication Base Station Backup Battery

When natural disasters cut off power grids, when extreme weather threatens power supply safety, our communication backup power system with intelligent charge/discharge management and military ...





Contact Us

For catalog requests, pricing, or partnerships, please visit:

<https://firmaskrzypek.pl>

Phone: +48 22 426 71 90

Email: info@firmaskrzypek.pl

Scan the QR code to access our WhatsApp.

