



# Battery cabinet production line commissioning process





## Overview

---

This article outlines critical steps to ensure a successful commissioning process. Understand Your Business Needs Before diving into battery manufacturing equipment, it's essential to conduct a thorough needs assessment. Identify the specific types of lithium batteries you plan to manufacture, the. What are the essential steps for battery system start-up and commissioning?

What are the key pre-startup and commissioning checks for a battery system?

What is the relationship between cell voltage and state of charge?

How does specific gravity change with state of charge?

Starting up and. After the last bolt has been tightened on a new battery installation and its assembly deemed complete, the next part of the process is the proper commissioning of the system. The responsible party should be identified at some point in the installation phase; however, this does not always occur. In. Did you know that virtual commissioning can reduce production downtime by up to 50% in battery pack assembly lines?

As electric vehicle (EV) demand skyrockets, manufacturers face immense pressure to deliver high-quality battery systems faster—but physical prototyping and manual testing slow. liable operation of a battery system. These procedures vary depending on the type of battery cells, such as lead-antimony and. An automotive part manufacturer needed a late-cycle product design update on their cell contacting system which required the development of an entirely new process and production line, posing a substantial risk of delaying the vehicle launch.



## Battery cabinet production line commissioning process



### Main battery dealership quotes uk

Has anyone here had their v40 main battery replaced by the dealer or any other workshop, if so how much was it (uk)

### New Battery

So I think the time has come to replace the main battery. Its the original Volvo 70ah EFB battery that was on the car from new in 2016.. The car starts fine but I keep getting the "Low Battery ...



### Battery Manufacturing Process: Materials, Production & Test

This guide covers the entire process, from material selection to the final product's assembly and testing. Whether you're a professional in the field or an enthusiast, this deep dive will provide ...

### Replacement battery

Hiya, I have an early 2014 D2 cross country automatic. It keeps complaining about battery level, even after our (rare but very long drives). So I think the battery is shot. Funnily, when I put my ...



## [Lithium-Ion Battery Assembly Line Process Explained](#)

From the meticulous grading of individual cells to the comprehensive testing of the assembled battery pack, the cell-to-battery assembly line embodies a fusion of precision, innovation, ...



## [How to Commission a Lithium Battery Assembly Line - aghup](#)

As the demand for energy storage solutions soars, businesses are keen to tap into lithium battery equipment manufacturing. This article outlines critical steps to ensure a successful ...



## **Main Battery Replacement**

Since that battery also supplies power to the ECU memory when the car is switched off, as well as powering the stop/start system, don't ignore it. Like the main battery, Volvo recommend ...

## [Case Study: Virtual Commissioning in](#)



## [Battery Parts ...](#)

See how virtual commissioning optimized a battery parts assembly line, saving over six weeks of time and ensuring timely factory acceptance testing.



## **Low battery charge error , Volvo V40 Forums**

Hello everyone, I just bought my first car, a 2014 Volvo V40 T3, and a warning appears on the dashboard that says 'low battery charge.' The car is recently

## **Battery Recycling for Businesses**

Battery Recycling for Businesses Use the chart below to determine how to handle used batteries generated by your business. Batteries that are considered hazardous must be recycled or managed ...



## [Proper Commissioning Procedures for Lead-Acid Batteries](#)

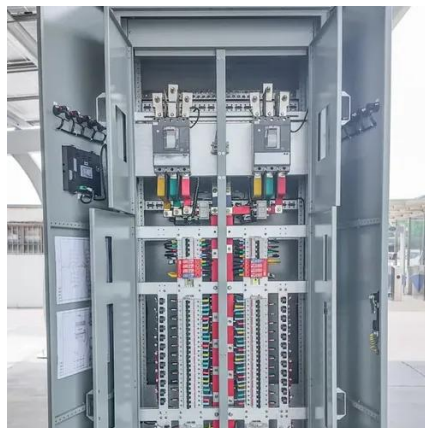
New system commissioning must be carried out properly and documented for the record. This paper will explore typical commissioning procedures for both, vented lead-acid (VLA) and valve regulated lead ...

## [Lithium-ion Battery Module and Pack](#)



## Production Line Process Flow

First, the battery cells are put into the production line manually, then the production line equipment automatically scans the battery cells, and at the same time carries out the internal ...



## **Battery Pack Assembly Line Virtual Commissioning**

Virtual commissioning is the process of creating and testing a digital twin of your entire battery assembly line before physical implementation. This involves simulating mechanical systems, ...

## **Secondary Battery**

My main battery just died, had it replaced with same, and car kept giving me Battery charging, so no stop start. When stop/start worked, it was for about 10 sec, and car would start, with ...



## **Low Battery warning , Volvo V40 Forums**

Battery is easy to do yourself if you're at all handy around a screw driver and a spanner, just remember to reset the battery management system before you start using the car or it'll kill the ...

## **Main Battery Change**



Going to change the service battery in my 15 V40cc D2. Anything I need to be ware of or look out for ??

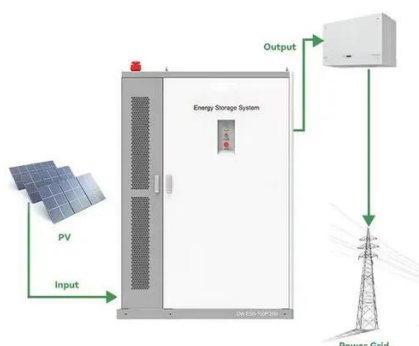


## PRODUCTION PROCESS OF BATTERY MODULES AND ...

Based on the brochure "Production process of lithium-ion battery cells", this brochure presents the process chain for the production of battery modules and battery packs.

## Battery production line commissioning

initial electrolyte filling process. Before adding electrolyte, it's vital to verify that the cells are sealed and the a tation, which is stable and efficient. After commissioning, t ics can sup mmissioning of your ...



## Household Battery Recycling

Household battery recycling locations Lead-acid batteries, or "automotive type batteries," are banned from disposal. Consumers may bring lead-acid batteries to any Wisconsin retailer that sells these ...

## Battery System Start-Up and



## Commissioning Procedure

The post describes how to start and commission a battery system. The guidance of professionals and best practices will keep the battery system functioning effectively.





## Contact Us

---

For catalog requests, pricing, or partnerships, please visit:

<https://firmaskrzypek.pl>

Phone: +48 22 426 71 90

Email: [info@firmaskrzypek.pl](mailto:info@firmaskrzypek.pl)

Scan the QR code to access our WhatsApp.

