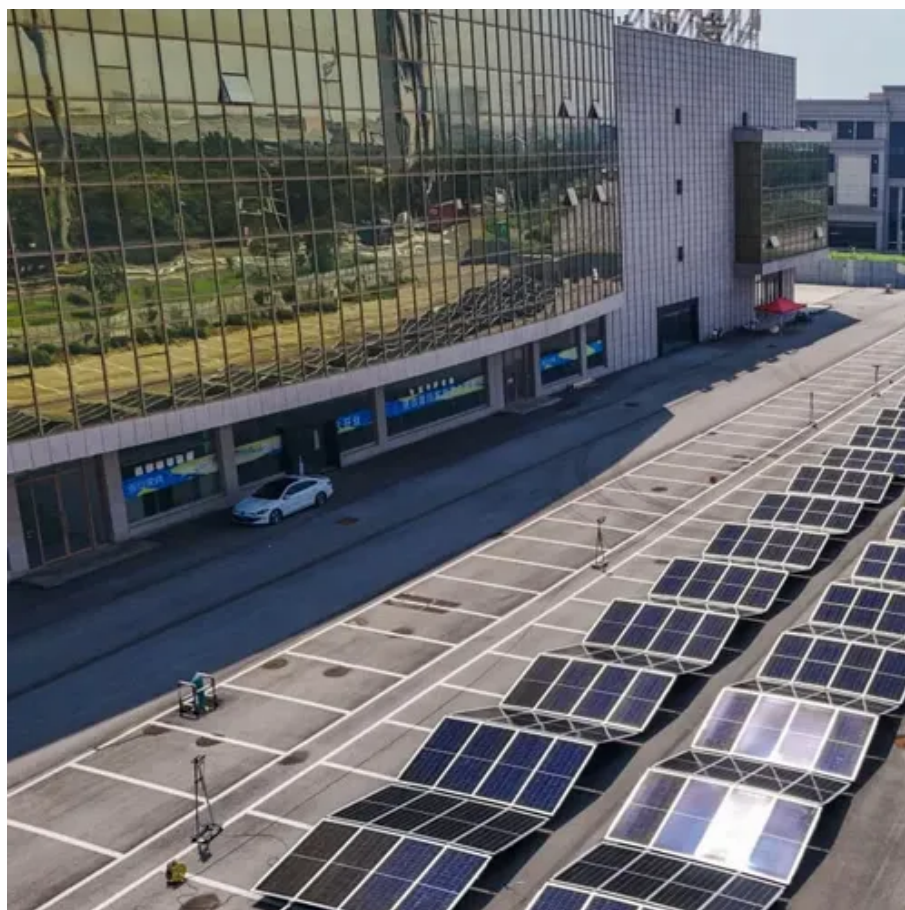




Base station power supply detection working principle





Base station power supply detection working principle



LLVD & BLVD in Base Station Power Cabinets

Working principle of llvd and blvd in base station power cabinet LLVD and BLVD Protection in Base Station Power Cabinets Introduction In modern communication networks, base stations, as ...

[Building better power supplies for 5G base stations](#)

Building better power supplies for 5G base stations Authored by: Alessandro Pevere, and Francesco Di Domenico, both at Infineon Technologies



Discrete

The AD8362 TruPowr(TM) rms power detector provides 65-dB dynamic range from 50 Hz to 3.8 GHz, allowing precise rms power measurement of RF signals typically found in W-CDMA, EDGE, and ...



[Power supply station equipment status monitoring and ...](#)

With the continuous development of the power industry and the acceleration of the process of intelligence, monitoring and analyzing the status of power supply equipment is crucial for ...



[Research on Design of Switching Power Supply Based on Mobile Base Station](#)

Keywords: Mobile Base Station, Switching Power Supply, Control Circuit
Abstract: With the rapid development of mobile communication service, the construction of mobile

DC20161020.doc

These special working conditions for mobile base stations for communications power equipment put forward higher requirements, mainly in the following areas: The use of rural power ...



[Recurrent Neural Network-based Base Transceiver Station Power Supply](#)

In mobile telecom networks, Base Transceiver Station (BTS) is a key infrastructure that connects customers with the mobile network. BTSs are geographically scattered across the networks service ...

[Recurrent Neural Network-based Base](#)



Transceiver Station Power Supply

This work investigates the early prediction of BTS failures due to power system and environmental abnormalities using recurrent neural networks (RNN) with long short term memory ...



Machine learning for base transceiver stations power failure ...

Base Transceiver Stations (BTSs), are foundational to mobile networks but are vulnerable to power failures, disrupting service delivery and causing user inconvenience. This paper proposes a ...



Contact Us

For catalog requests, pricing, or partnerships, please visit:

<https://firmaskrzypek.pl>

Phone: +48 22 426 71 90

Email: info@firmaskrzypek.pl

Scan the QR code to access our WhatsApp.

