



Base station communication three boxes





Overview

Base stations contain several key parts. The transceiver handles signal modulation. The power amplifier boosts signal. Simply put, a base station (BS) is a wireless transceiver device in a mobile communication network that provides wireless coverage and communicates with mobile terminals like your phone. The present-day tele-space is incomplete without the base stations as these constitute an important part of the modern-day scheme of wireless communications. It acts as a hub between mobile devices and the core system. Their product information is available in multiple formats to assist customers in making informed decisions.



Base station communication three boxes



What Is A Base Station?

Base stations play a central role in two-way radio systems, such as citizens band (CB) radio and ham radio. In these setups, the base station serves as a fixed point of communication, ...

[What is a Base Station? -- From Communication Core to Thermal ...](#)

How Does a Base Station Work? A base station's operation can be summarized in three steps: wireless transmission, signal conversion, and network connection. First, the base station uses ...



Base Station System Structure

It describes the structure of base station systems with a convergent top-down and bottom-up framework. The BSWG has now moved beyond detailed consideration of these specific contributions.

[What Is a Base Station? Definition and How It Works](#)

Define the central communication hubs of modern wireless technology. Learn how base stations manage capacity and ensure reliable connections.

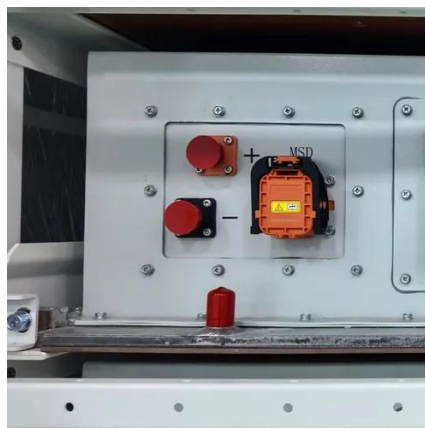


Base Stations

Base stations form a key part of modern wireless communication networks because they offer some crucial advantages, such as wide coverage, continuous communications and an array of ...

Base Stations and Cell Towers: The Pillars of Mobile Connectivity

Base stations use antennas mounted on cell towers to send and receive radio signals to and from mobile devices within their coverage area. This communication enables users to make ...



Base station

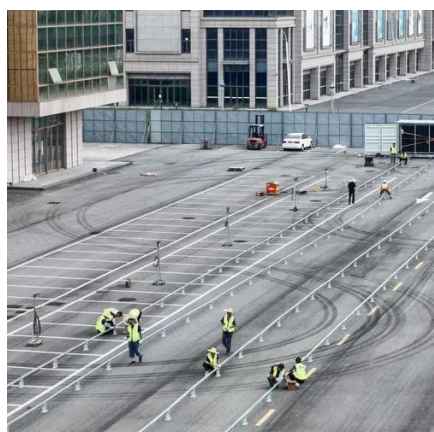
OverviewComputer networkingLand surveyingWireless communicationsSee also

In the area of wireless computer networking, a base station is a radio receiver/transmitter that serves as the hub of the local wireless network, and may also be the gateway between a wired network and the wireless network. It typically consists of a low-power transmitter and wireless router.



[RATH Emergency Communication Systems: Call Boxes, Base ...](#)

Comprehensive guide to RATH's Area of Refuge and Emergency Communication Systems, including call boxes, base stations, signage, and relevant building code requirements.



What are Base Station in Telecommunications?

Base stations contain several key parts. The antenna sends and receives radio energy. The transceiver handles signal modulation. The baseband processor converts signals to digital form. ...

[Understanding Base Stations: The Backbone of Wireless ...](#)

Base stations are the critical components that enable mobile phones and other devices to connect to cellular networks. Here's how they work in a typical mobile network: Signal Transmission ...





Contact Us

For catalog requests, pricing, or partnerships, please visit:

<https://firmaskrzypek.pl>

Phone: +48 22 426 71 90

Email: info@firmaskrzypek.pl

Scan the QR code to access our WhatsApp.

