



Athens geographic locations





Overview

Latitude and longitude coordinates are: 37. Known as one of the oldest cities in the world, Athens is the capital city of Greece and also one of the most beautiful and most touristic places in southern Europe. With a population of about 3,5 million people and a long history, the city of Athens stretches on a large peninsula that is protected by mountains from all sides of the horizon: Mount Egaleo to the west, Mount Parnitha to the north, Mount Penteli to the northeast and Mount Hymettus to the east. With its urban area's population numbering over 3. Athens is steeped in ancient history and mythology.



Athens geographic locations



[Athens , History, Population, Landmarks, & Facts , Britannica](#)

Athens lies 5 miles (8 km) from the Bay of Phaleron, an inlet of the Aegean (Aigaíon) Sea where Piraeus (Piraiévs), the port of Athens, is situated, in a mountain-girt arid basin divided north ...



[Where is Athens, Greece on Map Lat Long Coordinates](#)

Where is Athens, Greece on Map? Road map of Athens, Greece shows where the location is placed.

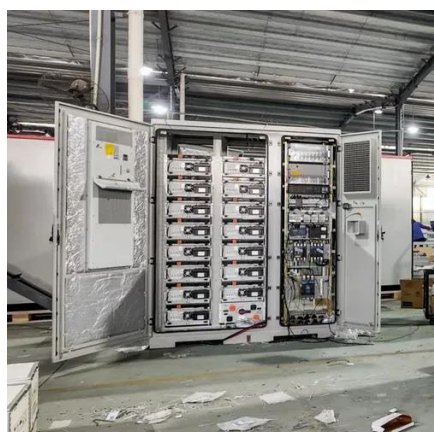
Outline of Athens

A significant coastal urban area in the Mediterranean, Athens is also the capital of the Attica region and is the southernmost capital on the European mainland.



Where is Athens , Location of Athens in Greece Map

Athens is located in the southern part of the country, is the capital city of Greece. It is situated in the region of Attica, in the central part of the Greek mainland.

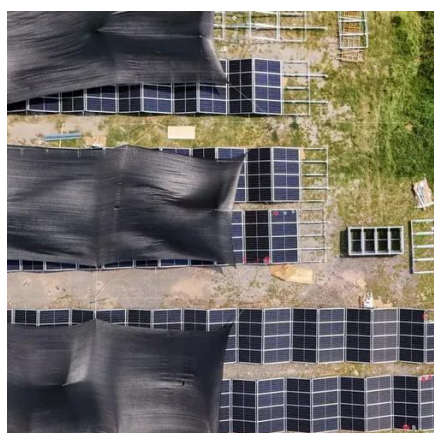


Geography of Athens, Greece , Greeka

With a population of about 3,5 million people and a long history, the city of Athens stretches on a large peninsula that is protected by mountains from all sides of the horizon: Mount Egaleo to the west, ...

Geography of Athens, Overview of Greece

Athens is the capital of the Hellenic Republic of Greece. It lies to the South East of the European continent, on the coast of the Aegean Sea, at the southern tip of the Balkan Peninsula.



Geography of Athens Greece

Athens occupies a wide coastal plain that slopes down towards the Aegean, surrounded by the mountainous reliefs of Parnitha Penteli and mount Hymettus. Piraeus, Faliro and the coasts of West ...

Where is Athens, Greece? / Athens



Location Map

Where is Athens located? Athens is located in the southern part of Greece. Check Athens Location Map here.



Geography of Athens Greece

Athens lies 5 miles (8 km) from the Bay of Phaleron, an inlet of the Aegean (Aigaion) Sea where Piraeus (Piraiévs), the port of Athens, is situated, in a mountain-girt arid basin divided north ...



Contact Us

For catalog requests, pricing, or partnerships, please visit:

<https://firmaskrzypek.pl>

Phone: +48 22 426 71 90

Email: info@firmaskrzypek.pl

Scan the QR code to access our WhatsApp.

