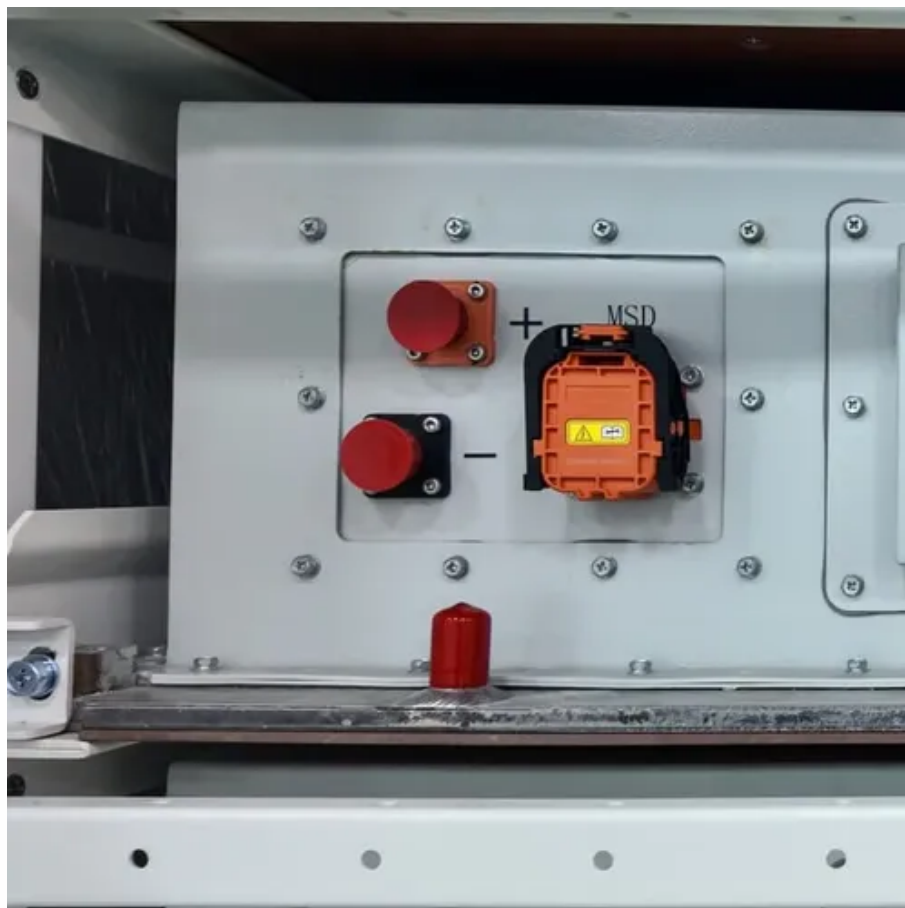




# Are photovoltaic panels facing south





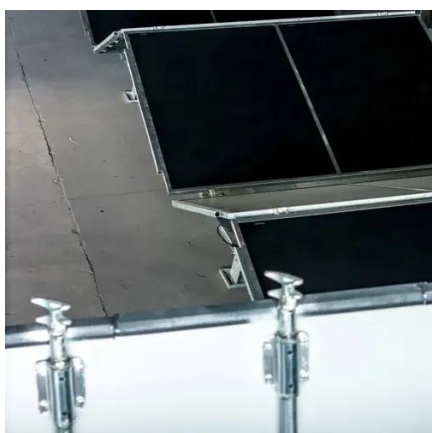
## Overview

---

The optimal direction for solar panels to face is generally south in the Northern Hemisphere, as this orientation maximizes sunlight capture throughout the day, potentially increasing energy generation by up to 20%. East-West Orientations Offer Strategic Value: While producing 75-85% of south-facing output, east and west-facing panels can provide superior financial returns by aligning with time-of-use electricity rates and matching typical household consumption patterns. A rooftop solar power system facing east or west can still. In most cases, the best direction for solar panels is facing south 1. Arrays that are appropriately oriented can improve energy output by up to 30% or more 2.



## Are photovoltaic panels facing south



### What is the Best Direction for Solar Panels to Face

A south-facing solar panel can provide the highest amount of energy by up to 30%. However, east- or west-facing solar panels can also produce enough energy throughout the day.

### Maximize Efficiency: Best Direction for Solar Panels , Sunrun

In most cases, the best direction for solar panels is facing south 1. Arrays that are appropriately oriented can improve energy output by up to 30% or more 2. However, factors such as ...



### Does My Roof Have to Face South for Solar? , Home Solar 101

For homes in the northern hemisphere, south-facing solar panels do receive the most direct sunlight throughout the year. However, a south-facing roof is by no means a necessity for a productive and ...

### Why Most Homeowners Get Solar Panel Direction Wrong (And How ...

While most solar companies default to "south-facing is best," the reality is far more nuanced. Your optimal panel direction depends on factors most installers never even consider.



## [Solar Panel Orientation: Everything You Need to Know](#)

The general rule for solar panel placement in the northern hemisphere is that solar panels should face true south (and in the southern, true north). This is usually the best direction ...

## [Which Direction Do Photovoltaic Roof Panels Most Often Face](#)

Although south-facing is ideal in theory, practical considerations often determine panel direction. Shading from trees, chimneys, vents and adjacent buildings can make a south-facing plane ...



## [Solar Panel Direction & Orientation: 2025 Complete Guide](#)

Yes, east and west-facing solar panels can be effective alternatives to south-facing installations. East-facing panels are ideal for households with high morning energy use, while west ...

## [What Direction Should Solar Panels Face?](#)



## Understanding the Basics ...

The optimal direction for solar panels to face is generally south in the Northern Hemisphere, as this orientation maximizes sunlight capture throughout the day, potentially increasing energy generation ...



## Best Direction for Solar Panels to Maximize Savings -- SolarReviews

In the United States, the best direction for solar panels to face is south as it exposes them to the most sun and allows them to produce the most electricity possible. Solar panels that face east or west will ...

## Best Roof Location for Solar Panels: South Facing Tilt and Shading

A tilt around 30-40 degrees, facing south, often yields strong annual output. In the Southeast, a shallower tilt (20-30 degrees) can be optimal due to intense sunlight and shorter winter ...





## Contact Us

---

For catalog requests, pricing, or partnerships, please visit:

<https://firmaskrzypek.pl>

Phone: +48 22 426 71 90

Email: [info@firmaskrzypek.pl](mailto:info@firmaskrzypek.pl)

Scan the QR code to access our WhatsApp.

