

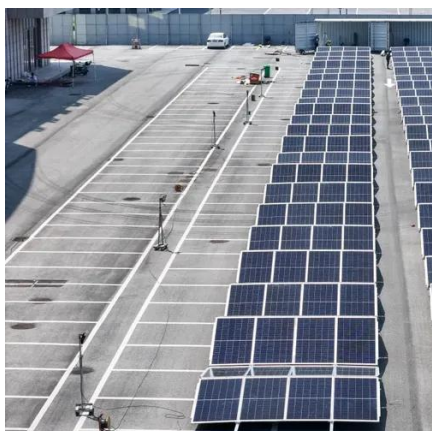


Airport Server Rack IP66 Operation Guide





Airport Server Rack IP66 Operation Guide



RE SERIES SERVER RACK

OVERVIEW ATEN Racks are designed for mounting standard 19" rack - mount equipment - servers, regardless of br straightforward equipment organization, excellent security and ...

INSTALLATION AND OPERATING MANUAL

This manual provides instructions for correct installation, handling, and maintenance to ensure long-term service life and compliance with international standards.



Rack Installation Instructions

Before installing your server in a rack cabinet, review the following guidelines: Two or more people are required to install the device in a rack cabinet. Ensure that the room air temperature is below 35°C ...

HPE Advanced Series Racks , Product Support

HPE Advanced Series Racks: Access product support documents and manuals, software, download drivers by operating environment, and view product support videos.



[IP Enclosures IP66 Floor-Mounted Data Racks \(SD Range\)](#)

IP Enclosures® IP66 Floor Mounted Data Racks are designed for protecting sensitive networking, server, and communication equipment in harsh industrial and outdoor environments.



Eaton RE Series Server Enclosure

INSTALLATION AND OPERATING MANUAL

They are widely used for telecommunications, ITS, mining, industrial networks, and infrastructure projects requiring high protection levels. This manual provides installation, handling, and ...



USER MANUAL

Leave adequate space at the front and rear of the racks for proper ventilation. Do not block, cover or insert objects into the external ventilation openings of the enclosure. The Server and Network Racks ...



User Manual

Overview This document outlines the recommended practices for assembling and installing the RE Series server enclosure.

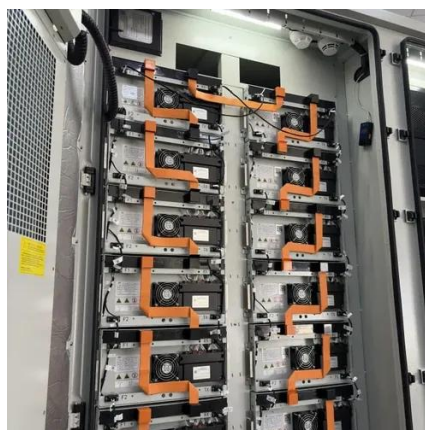


Eaton REC Series IT Rack

This manual contains important instructions that you should follow during installation and maintenance of the REC Series Enclosure. Please read all instructions before operating the equipment and save ...

What Does IP66 Rated Mean for Your Server Cabinet

To qualify for an IP66 rating, the "6" in the first digit represents the highest rating for solid ingress protection. In other words, the server cabinet is dust-tight. There can be no dust ingress ...





Contact Us

For catalog requests, pricing, or partnerships, please visit:

<https://firmaskrzypek.pl>

Phone: +48 22 426 71 90

Email: info@firmaskrzypek.pl

Scan the QR code to access our WhatsApp.

